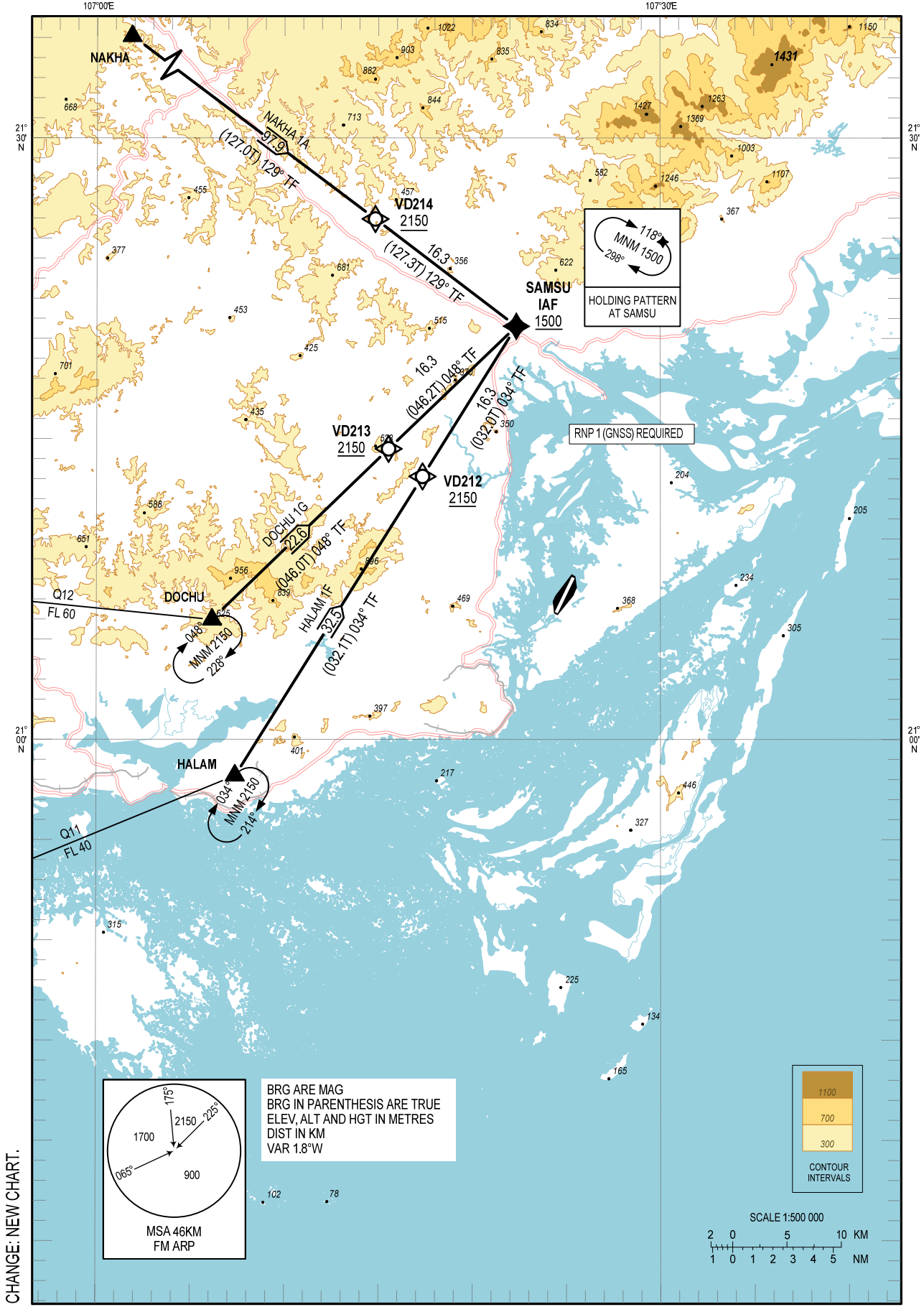


STANDARD ARRIVAL CHART -  
INSTRUMENT (STAR) - ICAO

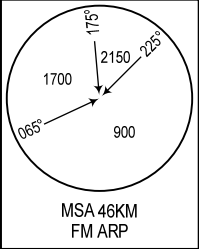
TRANSITION ALTITUDE  
2750M

TWR  
PRI: 118.1 MHz  
SRY: 118.85 MHz

QUANG NINH/VAN DON INTL (VVVD)  
RNP  
RWY 21  
HALAM 1F, DOCHU 1G, NAKHA 1A



CHANGE: NEW CHART.



BRG ARE MAG  
BRG IN PARENTHESIS ARE TRUE  
ELEV, ALT AND HGT IN METRES  
DIST IN KM  
VAR 1.8°W