

**STANDARD ARRIVAL  
CHART - INSTRUMENT  
(STAR)**

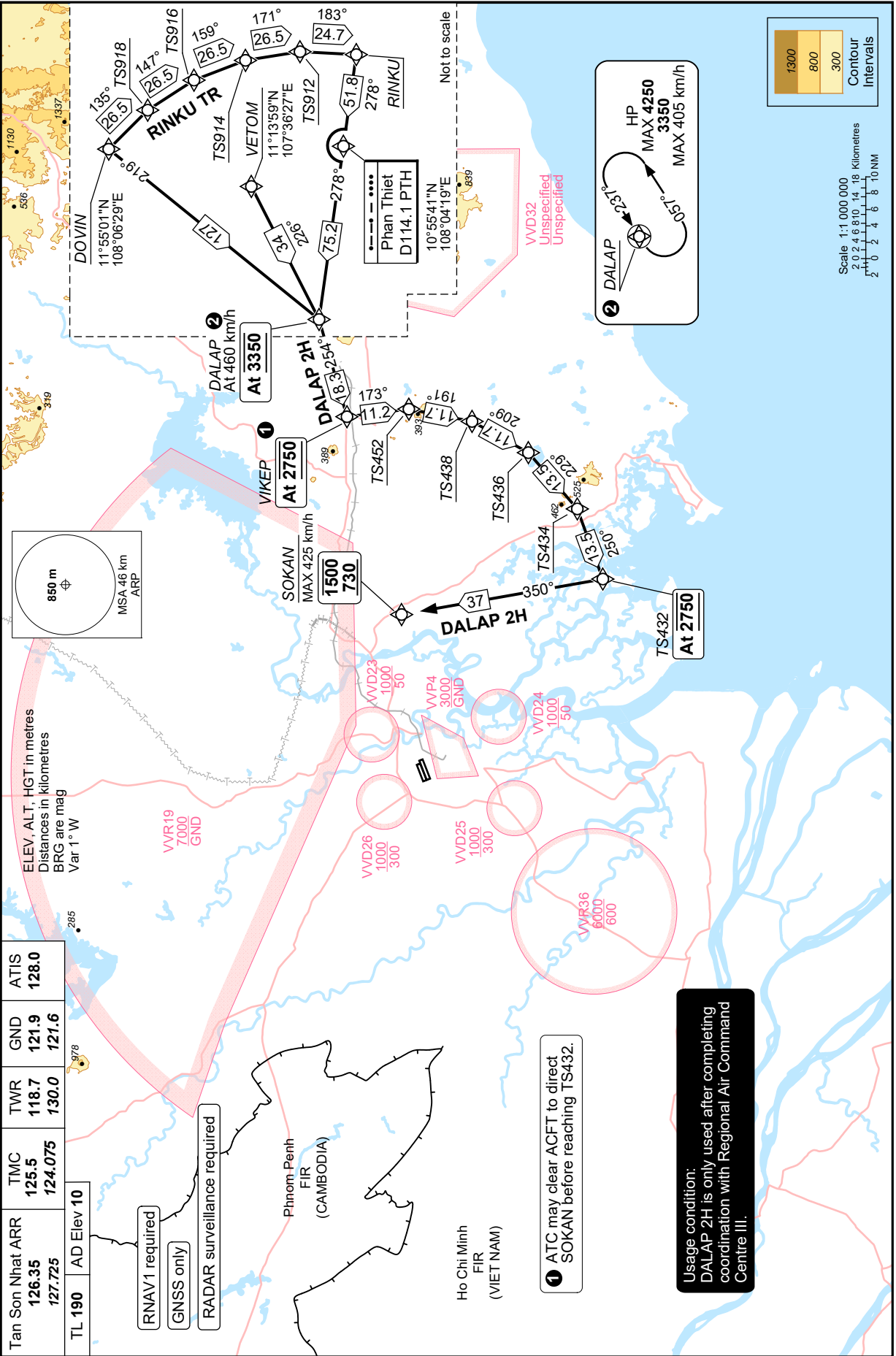
TRANSITION LVL FL190  
TRANSITION ALT 5500 m

**HO CHI MINH/TAN SON NHAT INTL (VVTS)  
RNAV RWY 25L/R  
DALAP 2H**

Change: Deletion of TMA limit.

Tan Son Nhat ARR	TMC	TWR	GND	ATIS
126.35	125.5	118.7	121.9	128.0
127.725	124.075	130.0	121.6	
TL 190	AD Elev 10			

- RNAV1 required
- GNSS only
- RADAR surveillance required



**Usage condition:**  
DALAP 2H is only used after completing coordination with Regional Air Command Centre III.

① ATC may clear ACFT to direct SOKAN before reaching TS432.