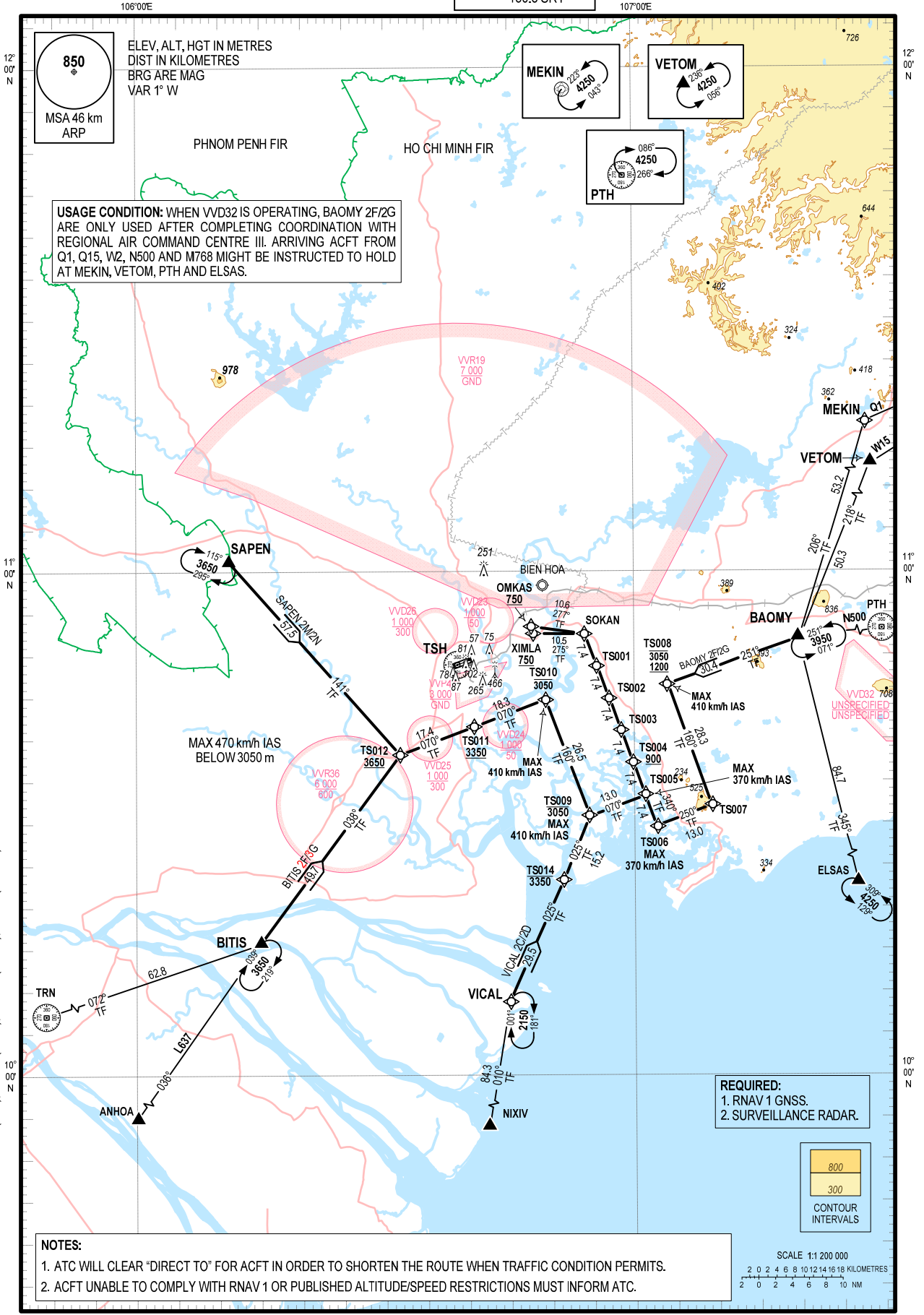


**STANDARD ARRIVAL CHART -
INSTRUMENT (STAR) - ICAO**

TRANSITION ALTITUDE
5500 m

TMC: 125.5 PRI
124.075 SRY
ARR: 126.35 PRI
127.725 SRY
TWR: 118.7 PRI
130.0 SRY

**HO CHI MINH/TAN SON NHAT INTL (VVTS)
RNAV RWY 25L/R**
BAOMY 2F, BITIS 2F, SAPEN 2M, VICAL 2C (RWY 25L)
BAOMY 2G, BITIS 3G, SAPEN 2N, VICAL 2D (RWY 25R)



CHANGES: REPLACEMENT OF TSN (TSH), NIXUP (NIXIV), LEEMA (XIMLA), YANKI (OMKAS) AND RELATED DATA.