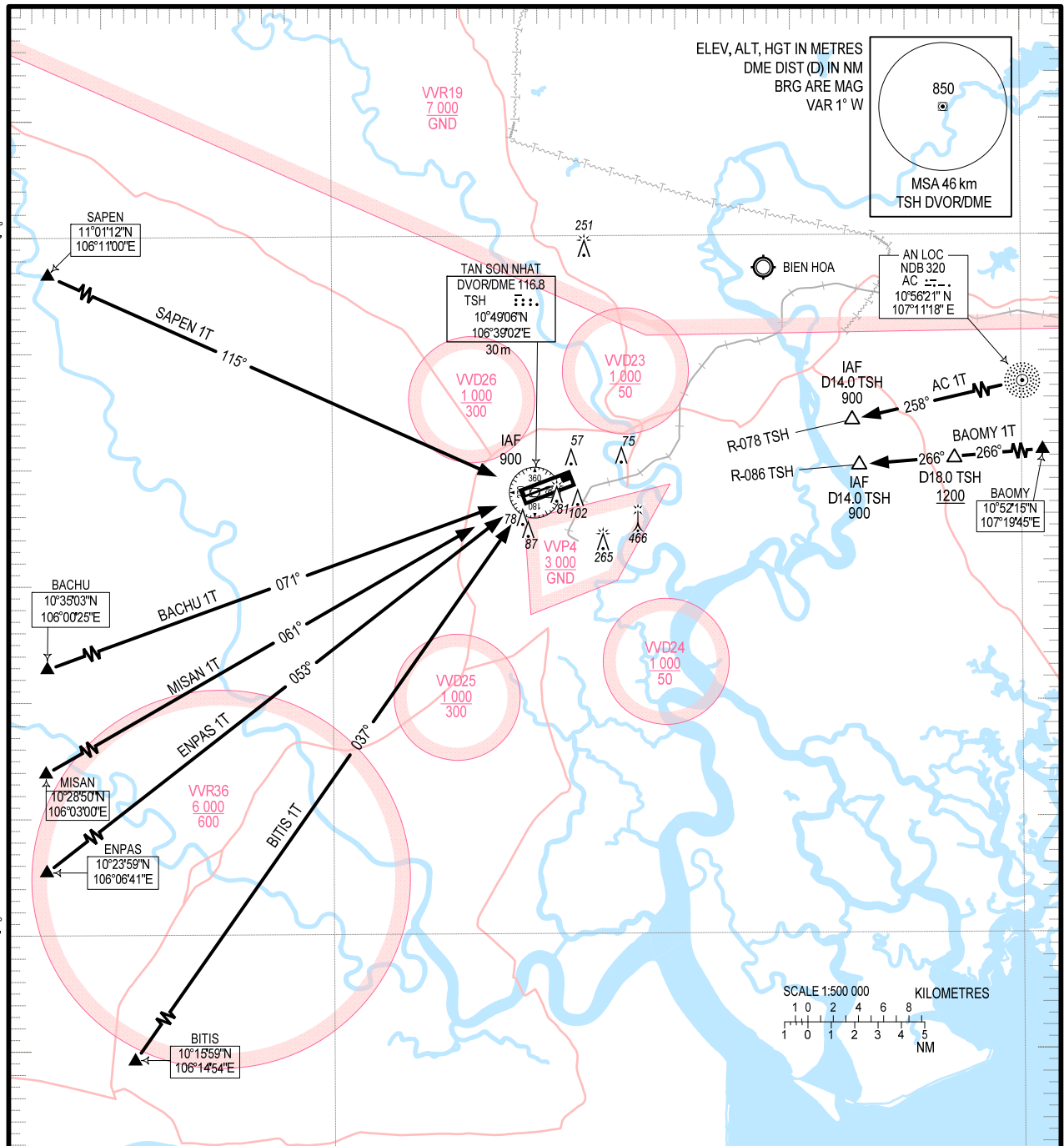


**STANDARD ARRIVAL CHART -
INSTRUMENT (STAR) - ICAO**

TRANSITION ALTITUDE 5500 m
TRANSITION LEVEL FL190

TMC:	125.5 PRI
ARR:	124.075 SRY
	126.35 PRI
	127.725 SRY
TWR:	118.7 PRI
	130.0 SRY

**HO CHI MINH/TAN SON NHAT INTL (VVTS)
RWY 25L/R**
AC 1T, BITIS 1T, BAOMY 1T, ENPAS 1T
MISAN 1T, BACHU 1T, SAPEN 1T



- RWY 25L/R**
1. AC ONE TANGO ARRIVAL (AC 1T): FROM AC NDB FLY TRACK 258° TO D14.0/R-078 TSH AT 900 m.
 2. BACHU ONE TANGO ARRIVAL (BACHU 1T): FROM BACHU FLY TRACK 071° TO TSH DVOR/DME AT 900 m.
 3. BAOMY ONE TANGO ARRIVAL (BAOMY 1T): FROM BAOMY FLY TRACK 266° TO D18.0/R-086 TSH AT 1200 m OR ABOVE, CONTINUE TO D14.0/R-086 TSH AT 900 m.
 4. BITIS ONE TANGO ARRIVAL (BITIS 1T): FROM BITIS FLY TRACK 037° TO TSH DVOR/DME AT 900 m.
 5. MISAN ONE TANGO ARRIVAL (MISAN 1T): FROM MISAN FLY TRACK 061° TO TSH DVOR/DME AT 900 m.
 6. ENPAS ONE TANGO ARRIVAL (ENPAS 1T): FROM ENPAS FLY TRACK 053° TO TSH DVOR/DME AT 900 m.
 7. SAPEN ONE TANGO ARRIVAL (SAPEN 1T): FROM SAPEN FLY TRACK 115° TO TSH DVOR/DME AT 900 m.

CHANGES: PROCEDURES; REPLACEMENT OF TSN (TSH), KANTA (ENPAS), BASON (BACHU) AND RELATED DATA.