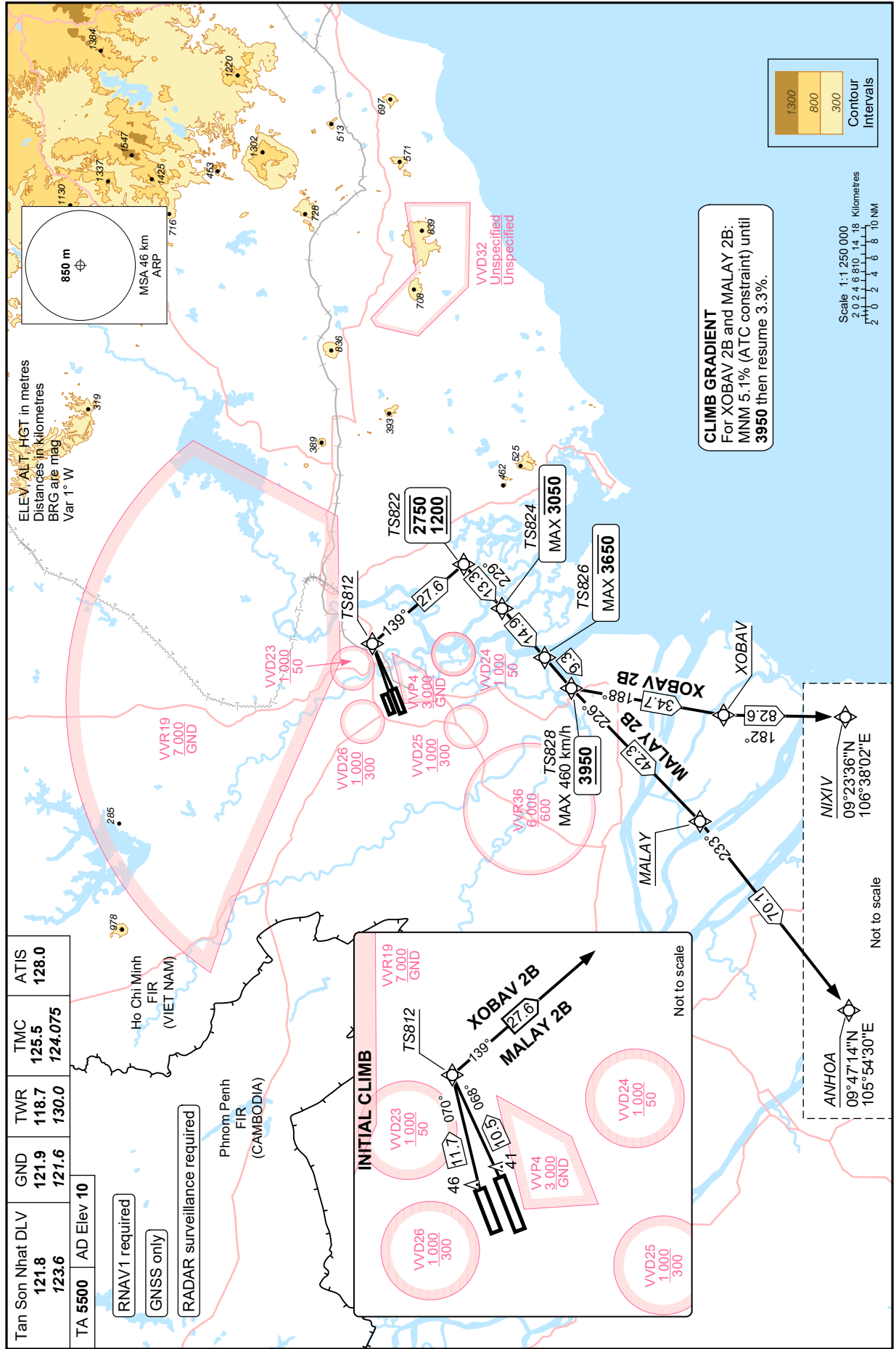


**STANDARD DEPARTURE
CHART – INSTRUMENT
(SID)**

TRANSITION LVL FL190
TRANSITION ALT 5500 m

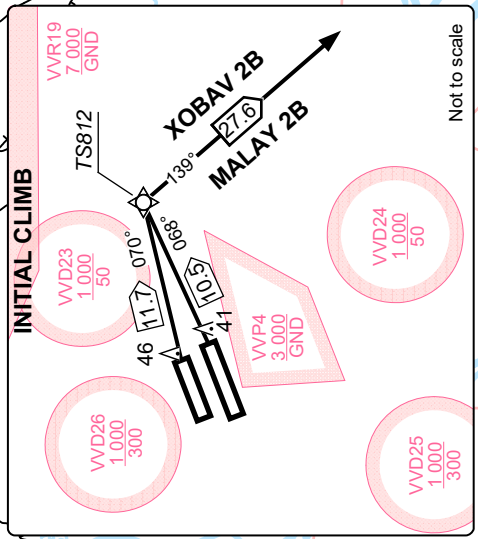
HO CHI MINH/TAN SON NHAT INTL (VVTS)
RNAV RWY 07L/R
XOBAB 2B MALAY 2B

Changes: Replacement of LATHA (XOBAB), NIXUP (NIXIV) and Related data; Deletion of TMA limit.



Tan Son Nhat DLV	121.8	123.6	GND	121.9	121.6	TWR	118.7	130.0	TMC	125.5	124.075	ATIS	128.0
TA 5500	AD Elev 10												

- RNAV1 required
- GNSS only
- RADAR surveillance required



CLIMB GRADIENT
For XOBAB 2B and MALAY 2B:
MNM 5.1% (ATC constraint) until
3950 then resume 3.3%.

Scale 1:1 250 000
2 0 2 4 6 8 10
Kilometres
2 0 2 4 6 8 10
Nautical Miles