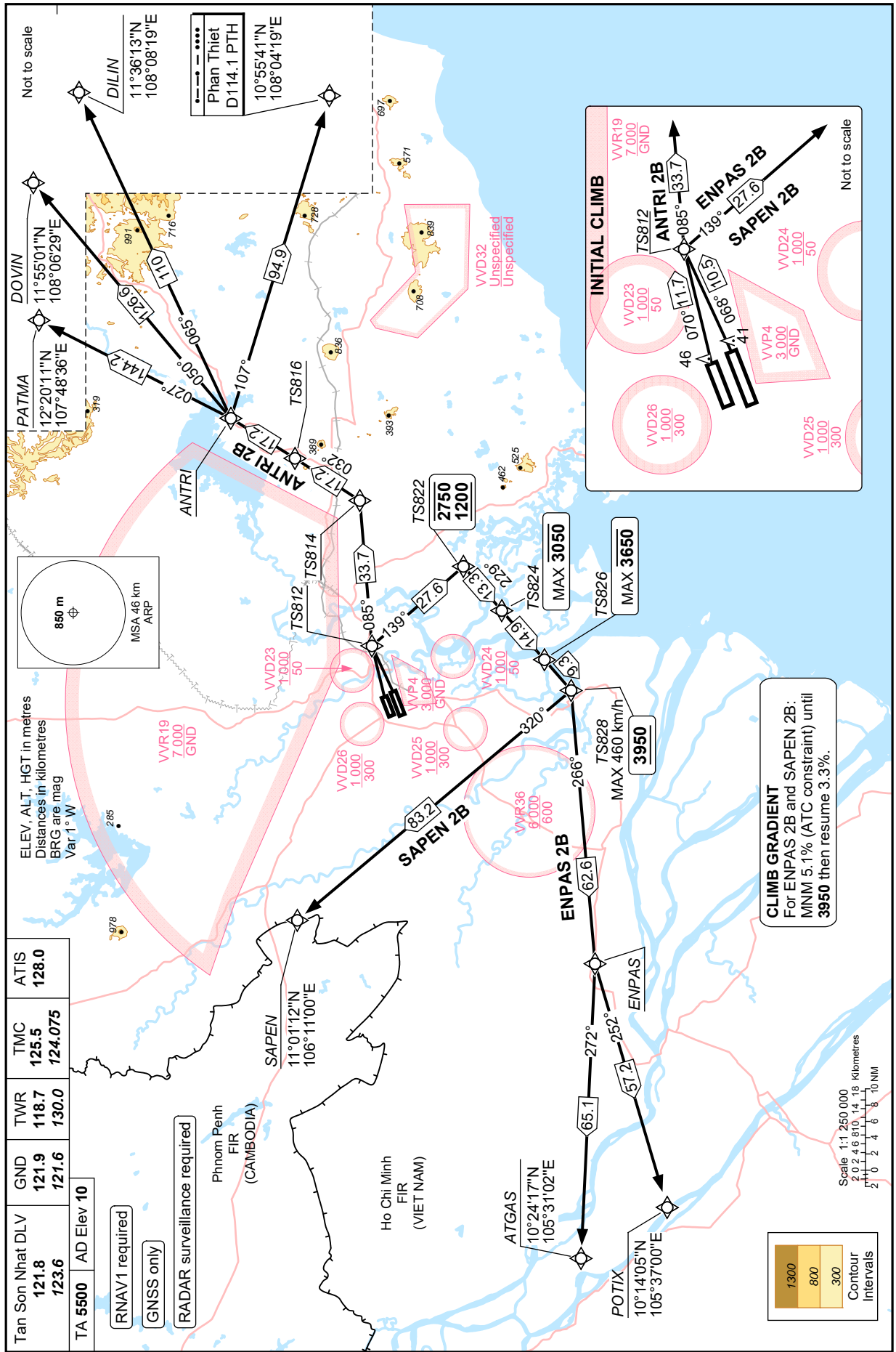


**STANDARD DEPARTURE  
CHART – INSTRUMENT  
(SID)**

TRANSITION LVL FL190  
TRANSITION ALT 5500 m

**HO CHI MINH/TAN SON NHAT IMTL (VVTS)  
RNAV RWY 07L/R  
ANTRI 2B ENPAS 2B SAPEN 2B**

Changes: Replacement of KANTA (ENPAS), VIMBU (ATGAS) and Related data; Deletion of TMA limit.



Tan Son Nhat DLV	GND	TWR	TMC	ATIS
121.8	121.9	118.7	125.5	128.0
123.6	121.6	130.0	124.075	
TA 5500	AD Elev 10			

- RNAV1 required
- GNSS only
- RADAR surveillance required

**CLIMB GRADIENT**  
For ENPAS 2B and SAPEN 2B:  
MNM 5.1% (ATC constraint) until  
3950 then resume 3.3%.

Scale 1:1 250 000  
2 0 2 4 6 8 10 Kilometres  
2 0 2 4 6 8 10 NM

1300  
800  
300  
Contour  
Intervals