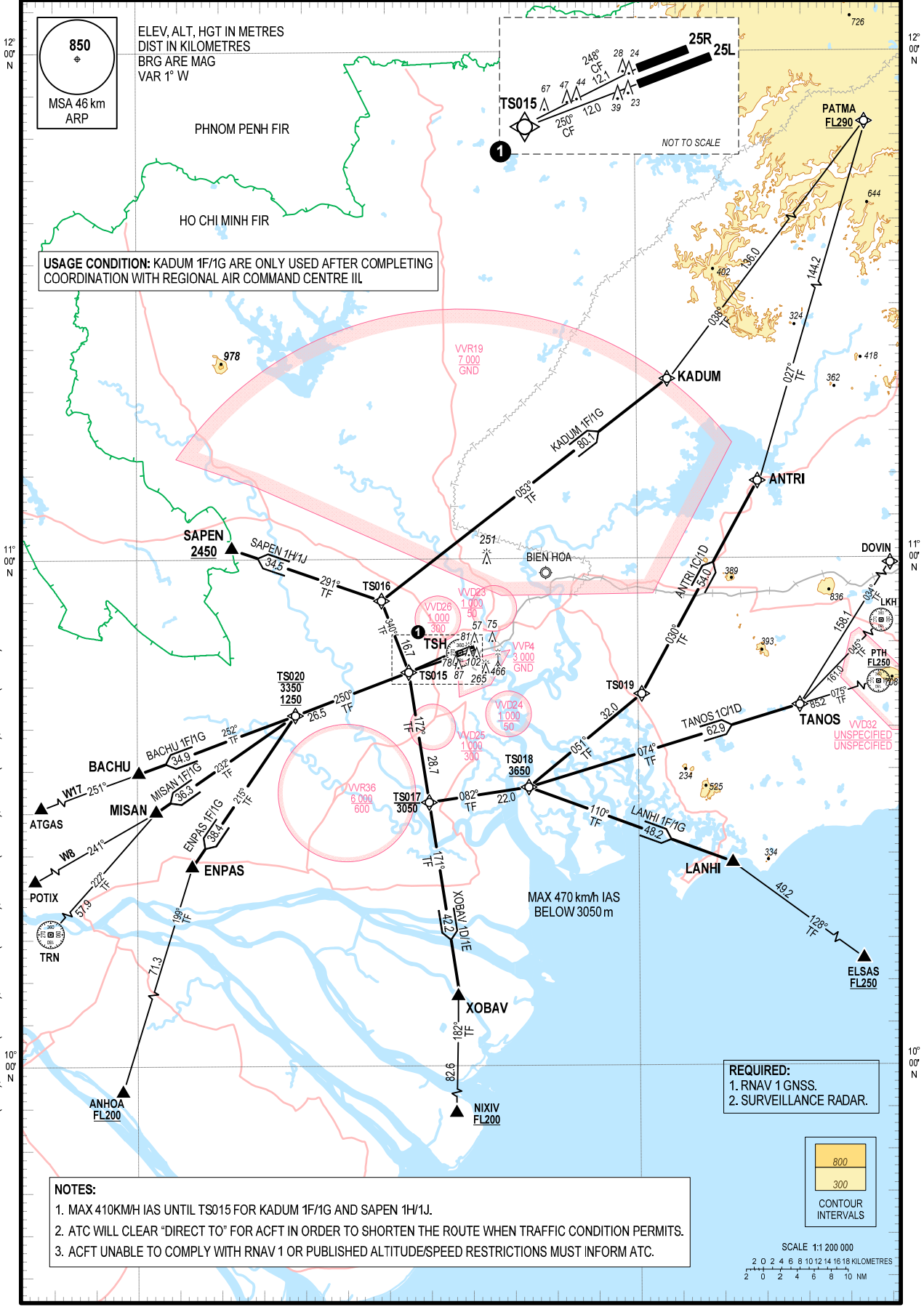


**STANDARD DEPARTURE CHART -
INSTRUMENT (SID) - ICAO**

TRANSITION ALTITUDE
5500 m

TMC: 125.5 PRI
124.075 SRY
ARR: 126.35 PRI
127.725 SRY
TWR: 118.7 PRI
130.0 SRY

**HO CHI MINH/TAN SON NHAT INTL (VVTS)
RNAV RWY 25L/R**
ANTRI 1C, BACHU 1F, KADUM 1F, ENPAS 1F, LANHI 1F,
XOBAV 1D, MISAN 1F, SAPEN 1H, TANOS 1C (RWY 25L)
ANTRI 1D, BACHU 1G, KADUM 1G, ENPAS 1G, LANHI 1G,
XOBAV 1E, MISAN 1G, SAPEN 1J, TANOS 1D (RWY 25R)



850
MSA 46 km
ARP

ELEV. ALT, HGT IN METRES
DIST IN KILOMETRES
BRG ARE MAG
VAR 1° W

USAGE CONDITION: KADUM 1F/1G ARE ONLY USED AFTER COMPLETING
COORDINATION WITH REGIONAL AIR COMMAND CENTRE IIL

CHANGES: REPLACEMENT OF TSN (TSH), LATHA (XOBAV), KANTA (ENPAS), BASON (BACHU), NIXUP (NIXIV), VIMBU (ATGAS) AND RELATED DATA.

NOTES:
1. MAX 410KMH IAS UNTIL TS015 FOR KADUM 1F/1G AND SAPEN 1H/1J.
2. ATC WILL CLEAR "DIRECT TO" FOR ACFT IN ORDER TO SHORTEN THE ROUTE WHEN TRAFFIC CONDITION PERMITS.
3. ACFT UNABLE TO COMPLY WITH RNAV 1 OR PUBLISHED ALTITUDE/SPEED RESTRICTIONS MUST INFORM ATC.

REQUIRED:
1. RNAV 1 GNSS.
2. SURVEILLANCE RADAR.

800
300
CONTOUR
INTERVALS

SCALE 1:1 200 000
2 0 2 4 6 8 10 12 14 16 18 KILOMETRES
2 0 2 4 6 8 10 NM