

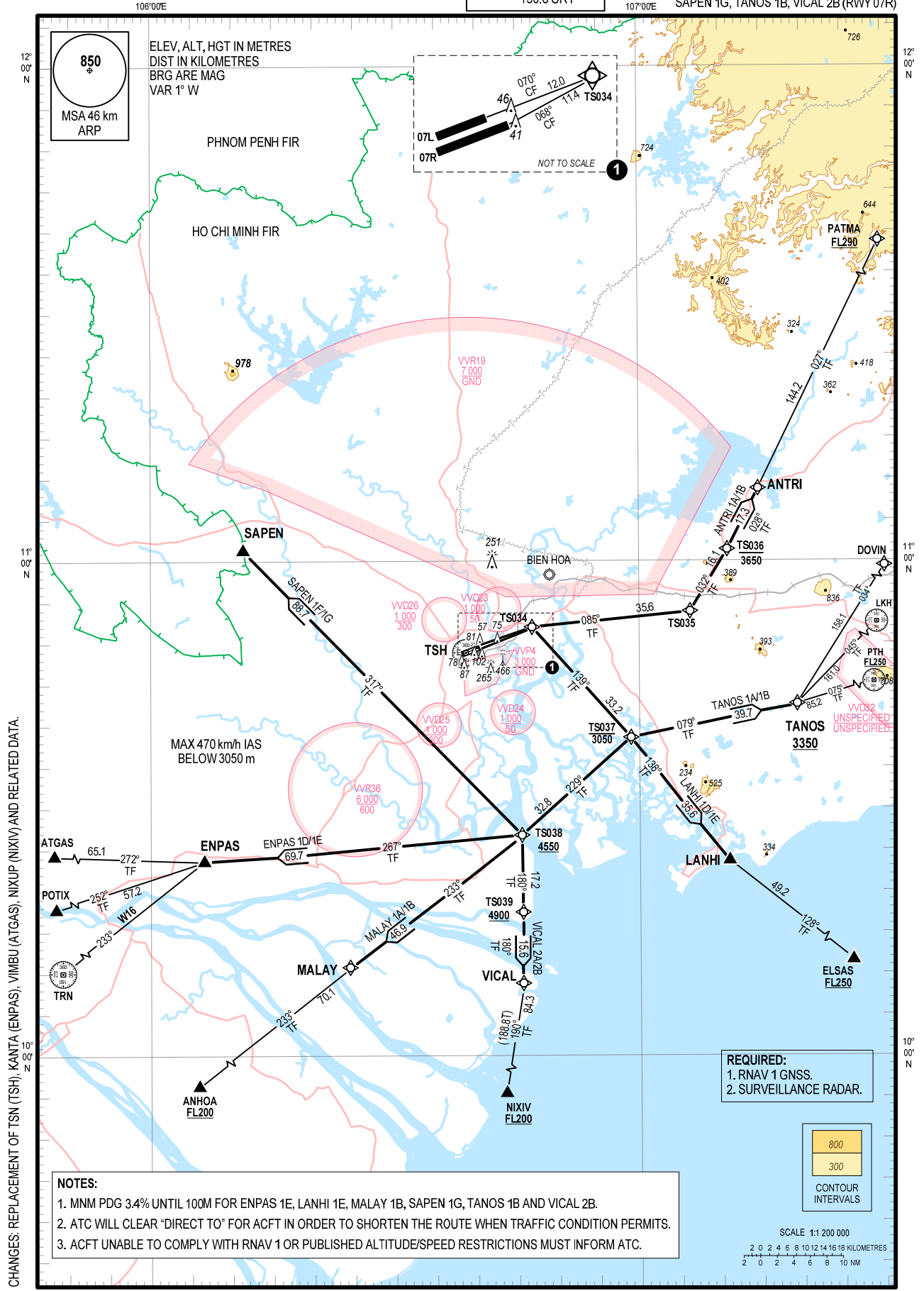
**STANDARD DEPARTURE CHART -  
INSTRUMENT (SID) - ICAO**

TRANSITION ALTITUDE  
5500 m

TMC: 125.5 PRI  
124.075 SRY  
ARR: 126.35 PRI  
127.725 SRY  
TWR: 118.7 PRI  
130.0 SRY

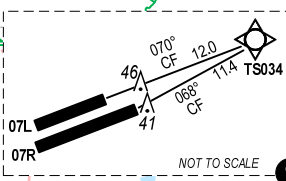
**HO CHI MINH/TAN SON NHAT INTL (VVTS)  
RNAV RWY 07L/R**

ANTRI 1A, ENPAS 1D, LANHI 1D, MALAY 1A,  
SAPEN 1F, TANOS 1A, VICAL 2A (RWY 07L)  
ANTRI 1B, ENPAS 1E, LANHI 1E, MALAY 1B,  
SAPEN 1G, TANOS 1B, VICAL 2B (RWY 07R)



850  
MSA 46 km  
ARP

ELEV, ALT, HGT IN METRES  
DIST IN KILOMETRES  
BRG ARE MAG  
VAR 1° W



CHANGES: REPLACEMENT OF TSN (TSH), KANTA (ENPAS), VIMBU (ATGAS), NIXUP (NIXIV) AND RELATED DATA.

- NOTES:**
1. MNM PDG 3.4% UNTIL 100M FOR ENPAS 1E, LANHI 1E, MALAY 1B, SAPEN 1G, TANOS 1B AND VICAL 2B.
  2. ATC WILL CLEAR "DIRECT TO" FOR ACFT IN ORDER TO SHORTEN THE ROUTE WHEN TRAFFIC CONDITION PERMITS.
  3. ACFT UNABLE TO COMPLY WITH RNAV 1 OR PUBLISHED ALTITUDE/SPEED RESTRICTIONS MUST INFORM ATC.

**REQUIRED:**  
1. RNAV 1 GNSS.  
2. SURVEILLANCE RADAR.

800  
300  
CONTOUR  
INTERVALS

SCALE 1:1 200 000  
2 0 2 4 6 8 10 12 14 16 18 KILOMETRES  
2 0 2 4 6 8 10 NM