

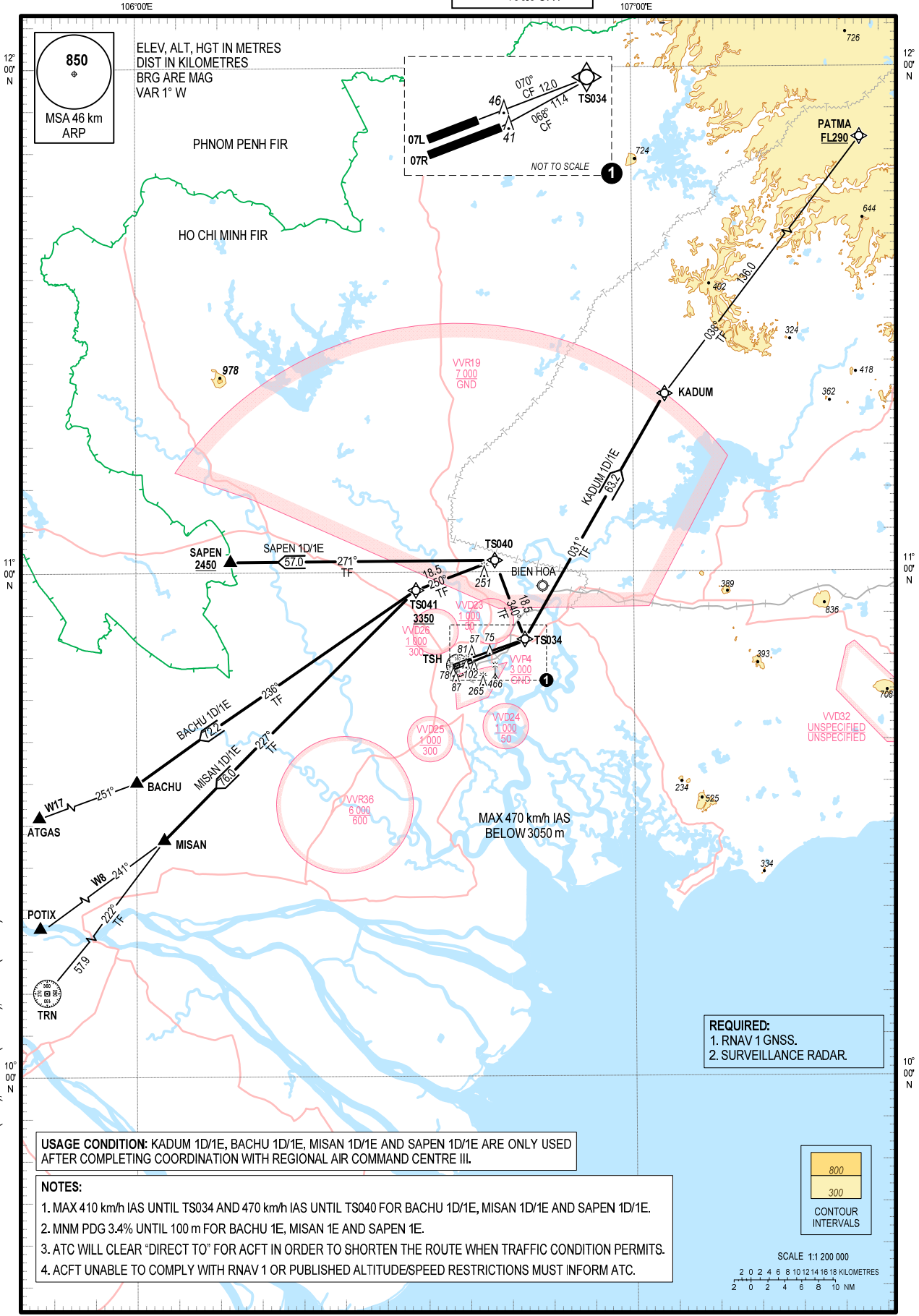
**STANDARD DEPARTURE CHART -
INSTRUMENT (SID) - ICAO**

TRANSITION ALTITUDE
5500 m

TMC: 125.5 PRI
124.075 SRY
ARR: 126.35 PRI
127.725 SRY
TWR: 118.7 PRI
130.0 SRY

**HO CHI MINH/TAN SON NHAT INTL (VVTS)
RNAV RWY 07L/R**

BACHU 1D, KADUM 1D, MISAN 1D, SAPEN 1D (RWY 07L)
BACHU 1E, KADUM 1E, MISAN 1E, SAPEN 1E (RWY 07R)



CHANGES: REPLACEMENT OF TSN (TSH), BASON (BACHU), VIMBU (ATGAS) AND RELATED DATA.