

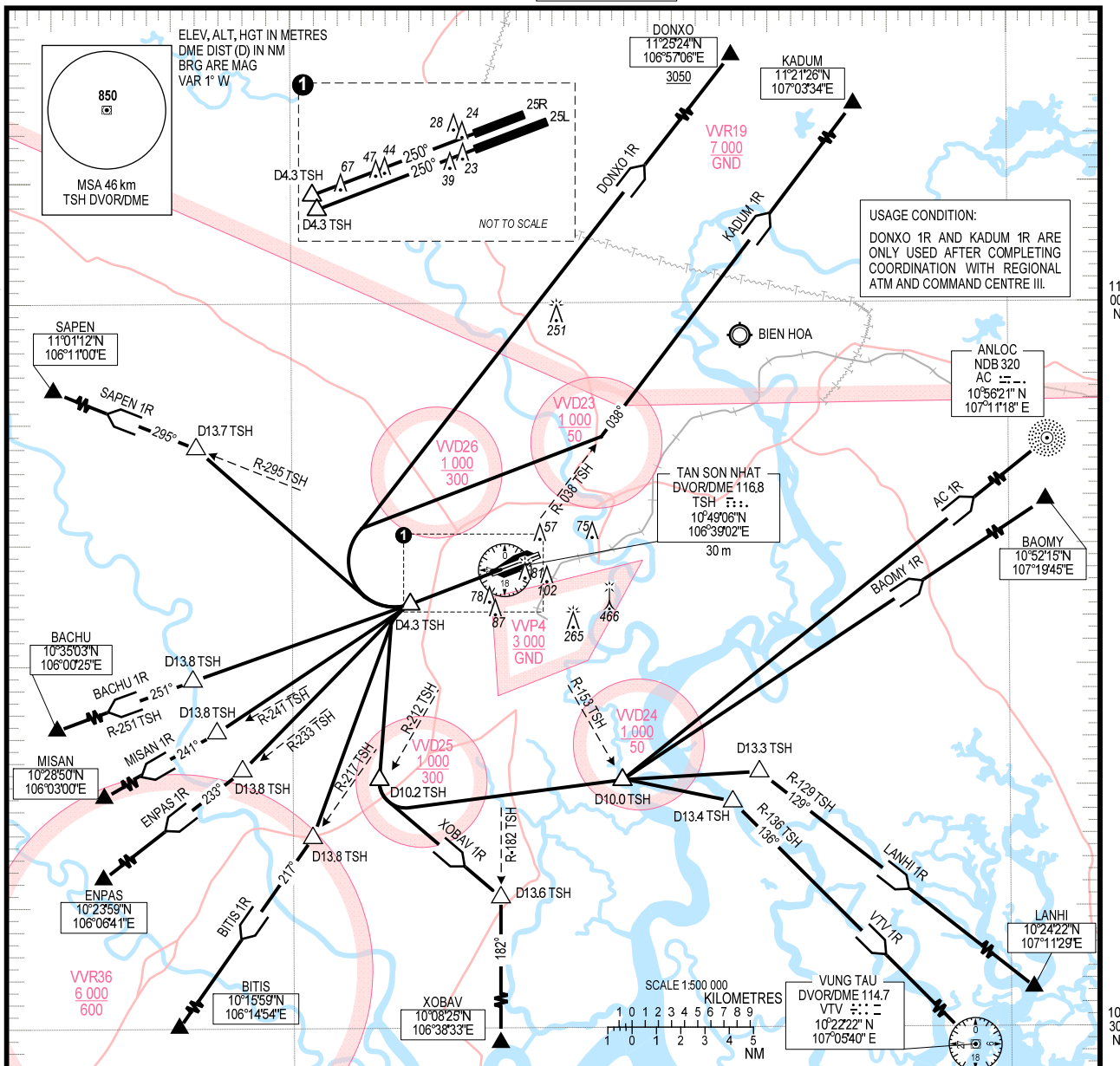
**STANDARD DEPARTURE CHART  
INSTRUMENT (SID) - ICAO**

TRANSITION ALTITUDE 5500 m  
TRANSITION LEVEL FL190

TMC: 125.5 PRI  
124.075 SRY  
ARR: 126.35 PRI  
127.725 SRY  
TWR: 118.7 PRI  
130.0 SRY

**HO CHI MINH/TAN SON NHAT INTL (VVTS)  
RWY 25L/R**

AC 1R, BAOMY 1R, DONXO 1R, BITIS 1R, BACHU 1R, ENPAS 1R,  
LANHI 1R, XOBAV 1R, KADUM 1R, MISAN 1R, SAPEN 1R, VTV 1R



- RWY 25L/R**
1. AC ONE ROMEO DEPARTURE (AC 1R): AFTER DEPARTURE, MAINTAIN RWY HEADING TO D4.3 TSH, TURN LRFT TO D10.2/R-212 TSH, TURN LEFT TO D10.0/R-153 TSH, THEN DIRECT TO AC NDB.
  2. BACHU ONE ROMEO DEPARTURE (BACHU 1R): AFTER DEPARTURE, MAINTAIN RWY HEADING TO D4.3 TSH, TURN LEFT TO INTERCEPT R-251 TSH AT D13.8 TSH TO BACHU.
  3. BAOMY ONE ROMEO DEPARTURE (BAOMY 1R): AFTER DEPARTURE, MAINTAIN RWY HEADING TO D4.3 TSH, TURN LEFT TO D10.2/R-212 TSH, TURN LEFT TO D10.0/R-153 TSH, THEN DIRECT TO BAOMY.
  4. BITIS ONE ROMEO DEPARTURE (BITIS 1R): AFTER DEPARTURE, MAINTAIN RWY HEADING TO D4.3 TSH, TURN LEFT TO INTERCEPT R-217 TSH AT D13.8 TSH TO BITIS.
  5. DONXO ONE ROMEO DEPARTURE (DONXO 1R): AFTER DEPARTURE, MAINTAIN RWY HEADING TO D4.3 TSH, TURN RIGHT TO DONXO AT 3050 m OR ABOVE.
  6. KADUM ONE ROMEO DEPARTURE (KADUM 1R): AFTER DEPARTURE, MAINTAIN RWY HEADING TO D4.3 TSH, TURN RIGHT TO INTERCEPT R-038 TSH TO KADUM.
  7. LANHI ONE ROMEO DEPARTURE (LANHI 1R): AFTER DEPARTURE, MAINTAIN RWY HEADING TO D4.3 TSH, TURN LEFT TO D10.2/R-212 TSH, TURN LEFT TO D10.0/R-153 TSH, INTERCEPT R-129 TSH AT D13.3 TSH TO LANHI.
  8. MISAN ONE ROMEO DEPARTURE (MISAN 1R): AFTER DEPARTURE, MAINTAIN RWY HEADING TO D4.3 TSH, TURN LEFT TO INTERCEPT R-241 TSH AT D13.8 TSH TO MISAN.
  9. ENPAS ONE ROMEO DEPARTURE (ENPAS 1R): AFTER DEPARTURE, MAINTAIN RWY HEADING TO D4.3 TSH, TURN LEFT TO INTERCEPT R-233 TSH AT D13.8 TSH TO ENPAS.
  10. SAPEN ONE ROMEO DEPARTURE (SAPEN 1R): AFTER DEPARTURE, MAINTAIN RWY HEADING TO D4.3 TSH, TURN RIGHT TO INTERCEPT R-295 TSH AT D13.7 TSH TO SAPEN.
  11. VTV ONE ROMEO DEPARTURE (VTV 1R): AFTER DEPARTURE, MAINTAIN RWY HEADING TO D4.3 TSH, TURN LEFT TO D10.2/R-212 TSH, TURN LEFT TO D10.0/R-153 TSH, INTERCEPT R-136 TSH AT D13.4 TSH TO VTV DVOR/DME.
  12. XOBAV ONE ROMEO DEPARTURE (XOBAV 1R): AFTER DEPARTURE, MAINTAIN RWY HEADING TO D4.3 TSH, TURN LEFT TO D10.2/R-212 TSH, INTERCEPT R-182 TSH AT D13.6 TSH TO XOBAV.

CHANGES: PROCEDURES, REPLACEMENT OF TSN (TSH), LATHA (XOBAV), KANTA (ENPAS), BASON (BACHU) AND RELATED DATA.