

STANDARD DEPARTURE CHART -
INSTRUMENT (SID) - ICAO

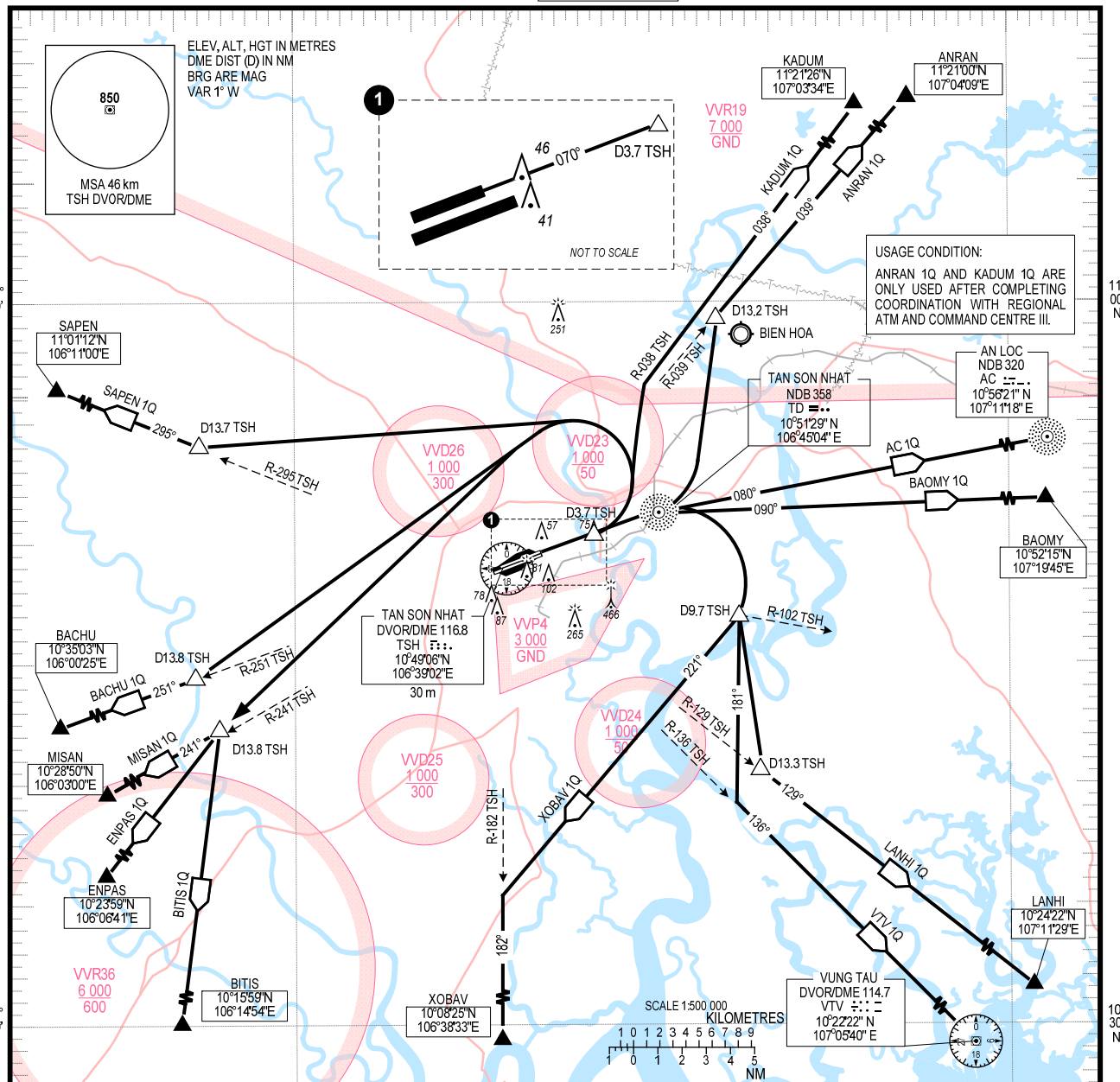
TRANSITION ALTITUDE 5500 m
TRANSITION LEVEL FL190

TMC: 125.5 PRI
124.075 SRY
ARR: 126.35 PRI
127.725 SRY
TWR: 118.7 PRI
130.0 SRY

HO CHI MINH/TAN SON NHAT INTL (VVTS)

RWY 07L

ANRAN 1Q, AC 1Q, BAOMY 1Q, BACHU 1Q, BITIS 1Q, ENPAS 1Q,
LANHI 1Q, XOBAV 1Q, KADUM 1Q, MISAN 1Q, SAPEN 1Q, VTV 1Q



- RWY 07L**
- AC ONE QUEBEC DEPARTURE (AC 1Q): AFTER DEPARTURE, MAINTAIN RWY HEADING PASSING TD NDB, FLY TRACK 080° TO AC NDB.
 - ANRAN ONE QUEBEC DEPARTURE (ANRAN 1Q): AFTER DEPARTURE, MAINTAIN RWY HEADING PASSING TD NDB, TURN RIGHT TO INTERCEPT R-039 TSH AT D13.2 TSH TO ANRAN.
 - BACHU ONE QUEBEC DEPARTURE (BACHU 1Q): VFD DEPARTURE, MAINTAIN RWY HEADING TO D3.7 TSH, TURN LRFT TO INTERCEPT R-251 TSH AT D13.8 TSH TO BACHU.
 - BAOMY ONE QUEBEC DEPARTURE (BAOMY 1Q): AFTER DEPARTURE, MAINTAIN RWY HEADING PASSING TD NDB, FLY TRACK 090° TO BAOMY.
 - BITIS ONE QUEBEC DEPARTURE (BITIS 1Q): AFTER DEPARTURE, MAINTAIN RWY HEADING TO D3.7 TSH, TURN LEFT TO D13.8/R-241 TSH, THEN DIRECT TO BITIS.
 - KADUM ONE QUEBEC DEPARTURE (KADUM 1Q): AFTER DEPARTURE, MAINTAIN RWY HEADING TO D3.7 TSH, TURN LEFT TO INTERCEPT R-038 TSH TO KADUM. MINIMUM PDG 3.4% UNTIL 300 m.
 - LANHI ONE QUEBEC DEPARTURE (LANHI 1Q): AFTER DEPARTURE, MAINTAIN RWY HEADING PASSING TD NDB, TURN RIGHT TO D9.7/R-102 TSH, INTERCEPT R-129 TSH AT D13.3 TSH TO LANHI.
 - MISAN ONE QUEBEC DEPARTURE (MISAN 1Q): AFTER DEPARTURE, MAINTAIN RWY HEADING TO D3.7 TSH, TURN LEFT TO INTERCEPT R-241 TSH AT D13.8 TSH TO MISAN.
 - ENPAS ONE QUEBEC DEPARTURE (ENPAS 1Q): AFTER DEPARTURE, MAINTAIN RWY HEADING TO D3.7 TSH, TURN LEFT TO D13.8/R-241 TSH, THEN DIRECT TO ENPAS.
 - SAPEN ONE QUEBEC DEPARTURE (SAPEN 1Q): AFTER DEPARTURE, MAINTAIN RWY HEADING TO D3.7 TSH, TURN LEFT TO INTERCEPT R-295 TSH AT D13.7 TSH TO SAPEN.
 - VTV ONE QUEBEC DEPARTURE (VTV 1Q): AFTER DEPARTURE, MAINTAIN RWY HEADING PASSING TD NDB, TURN RIGHT TO D9.7/R-102 TSH, FLY TRACK 181° TO INTERCEPT R-136 TSH TO VTV DVOR/DME.
 - XOBAV ONE QUEBEC DEPARTURE (XOBAV 1Q): AFTER DEPARTURE, MAINTAIN RWY HEADING PASSING TD NDB, TURN RIGHT TO D9.7/R-102 TSH, FLY TRACK 221° TO INTERCEPT R-182 TSH TO XOBAV.

CHANGES: PROCEDURES: REPLACEMENT OF TSN (TSH), LATHA (XOBAV), KANTA (ENPAS), BASON (BACHU) AND RELATED DATA.