

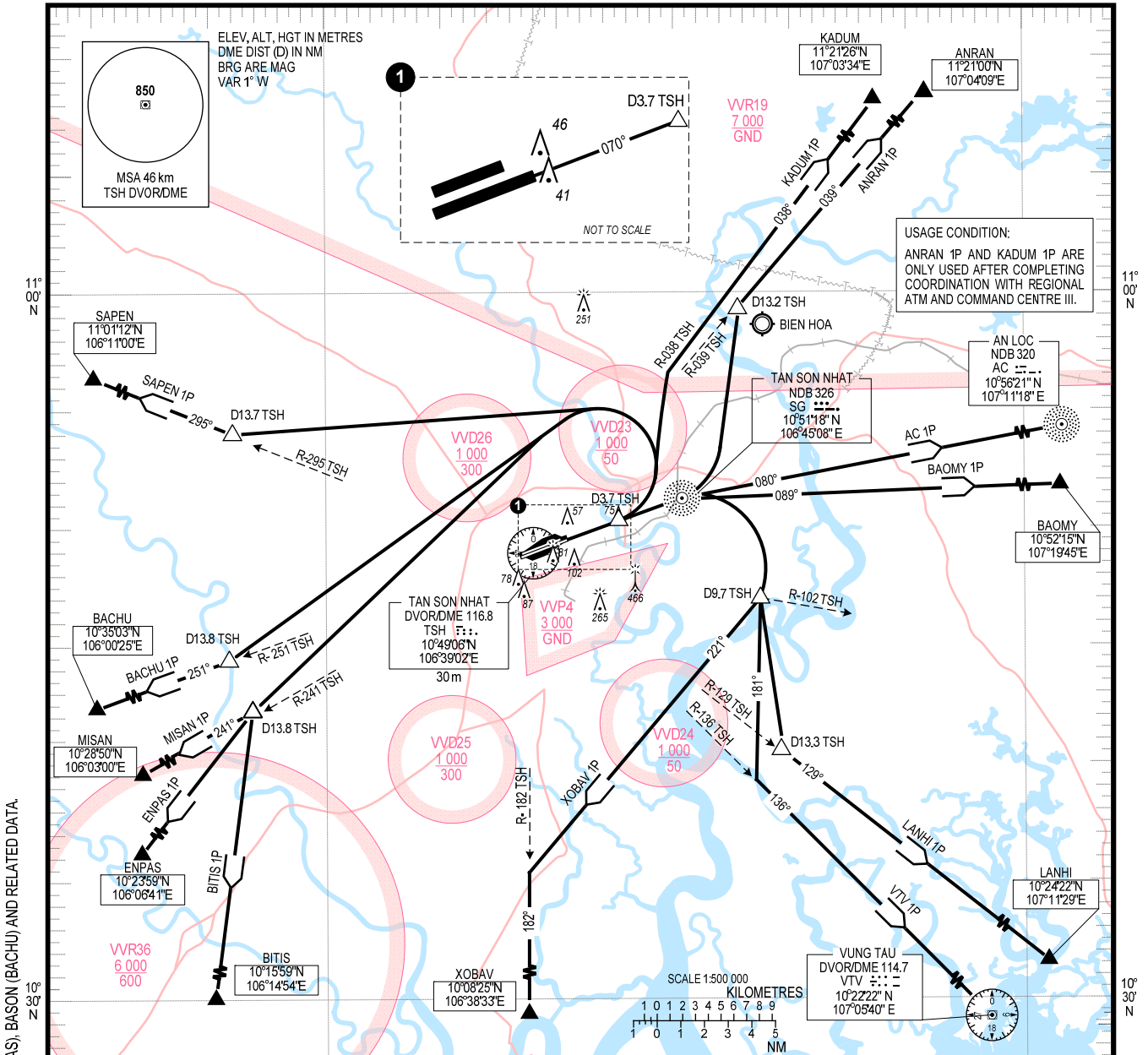
STANDARD DEPARTURE CHART -  
INSTRUMENT (SID) - ICAO

TRANSITION ALTITUDE 5500 m  
TRANSITION LEVEL FL190

TMC: 125.5 PRI  
124.075 SRY  
ARR: 126.35 PRI  
127.725 SRY  
118.7 PRI  
130.0 SRY

HO CHI MINH/TAN SON NHAT INTL (VVTS)  
RWY 07R

ANRAN 1P, AC 1P, BAOMY 1P, BACHU 1P, BITIS 1P, ENPAS 1P,  
LANHI 1P, XOBAB 1P, KADUM 1P, MISAN 1P, SAPEN 1P, VTV 1P



- RWY 07R**
1. AC ONE PAPA DEPARTURE (AC 1P): AFTER DEPARTURE, MAINTAIN RWY HEADING PASSING SG NDB, FLY TRACK 080° TO AC NDB.
  2. ANRAN ONE PAPA DEPARTURE (ANRAN 1P): AFTER DEPARTURE, MAINTAIN RWY HEADING PASSING SG NDB, TURN LEFT TO INTERCEPT R-039 TSH AT D13.2 TSH TO ANRAN.
  3. BACHU ONE PAPA DEPARTURE (BACHU 1P): AFTER DEPARTURE, MAINTAIN RWY HEADING TO D3.7 TSH, TURN LEFT TO INTERCEPT R-251 TSH AT D13.8 TSH TO BACHU.
  4. BAOMY ONE PAPA DEPARTURE (BAOMY 1P): AFTER DEPARTURE, MAINTAIN RWY HEADING PASSING SG NDB, FLY TRACK 089° TO BAOMY.
  5. BITIS ONE PAPA DEPARTURE (BITIS 1P): AFTER DEPARTURE, MAINTAIN RWY HEADING TO D3.7 TSH, TURN LEFT TO D13.8/R-241 TSH, THEN DIRECT TO BITIS.
  6. KADUM ONE PAPA DEPARTURE (KADUM 1P): AFTER DEPARTURE, MAINTAIN RWY HEADING TO D3.7 TSH, TURN LEFT TO INTERCEPT R-038 TSH TO KADUM. MINIMUM PDG 3.4% UNTIL 300m.
  7. LANHI ONE PAPA DEPARTURE (LANHI 1P): AFTER DEPARTURE, MAINTAIN RWY HEADING PASSING SG NDB, TURN RIGHT TO INTERCEPT D9.7/R-102 TSH, INTERCEPT R-129 TSH AT D13.3 TSH TO LANHI.
  8. MISAN ONE PAPA DEPARTURE (MISAN 1P): AFTER DEPARTURE, MAINTAIN RWY HEADING TO D3.7 TSH, TURN LEFT TO INTERCEPT R-241 TSH AT D13.8 TSH TO MISAN.
  9. ENPAS ONE PAPA DEPARTURE (ENPAS 1P): AFTER DEPARTURE, MAINTAIN RWY HEADING TO D3.7 TSH, TURN LEFT TO D13.8/R-241 TSH, THEN DIRECT TO ENPAS.
  10. SAPEN ONE PAPA DEPARTURE (SAPEN 1P): AFTER DEPARTURE, MAINTAIN RWY HEADING TO D3.7 TSH, TURN LEFT TO INTERCEPT R-295 TSH AT D13.7 TSH TO SAPEN.
  11. VTV ONE PAPA DEPARTURE (VTV 1P): AFTER DEPARTURE, MAINTAIN RWY HEADING PASSING SG NDB, TURN RIGHT TO D9.7/R-102 TSH, FLY TRACK 181° TO INTERCEPT R-136 TSH TO VTV DVOR/DME.
  12. XOBAB ONE PAPA DEPARTURE (XOBAB 1P): AFTER DEPARTURE, MAINTAIN RWY HEADING PASSING SG NDB, TURN RIGHT TO D9.7/R-102 TSH, FLY TRACK 221° TO INTERCEPT R-182 TSH TO XOBAB.

CHANGES: PROCEDURES; REPLACEMENT OF TSN (TSH), LATHA (XOBAB), KANTA (ENPAS), BASON (BACHU) AND RELATED DATA.