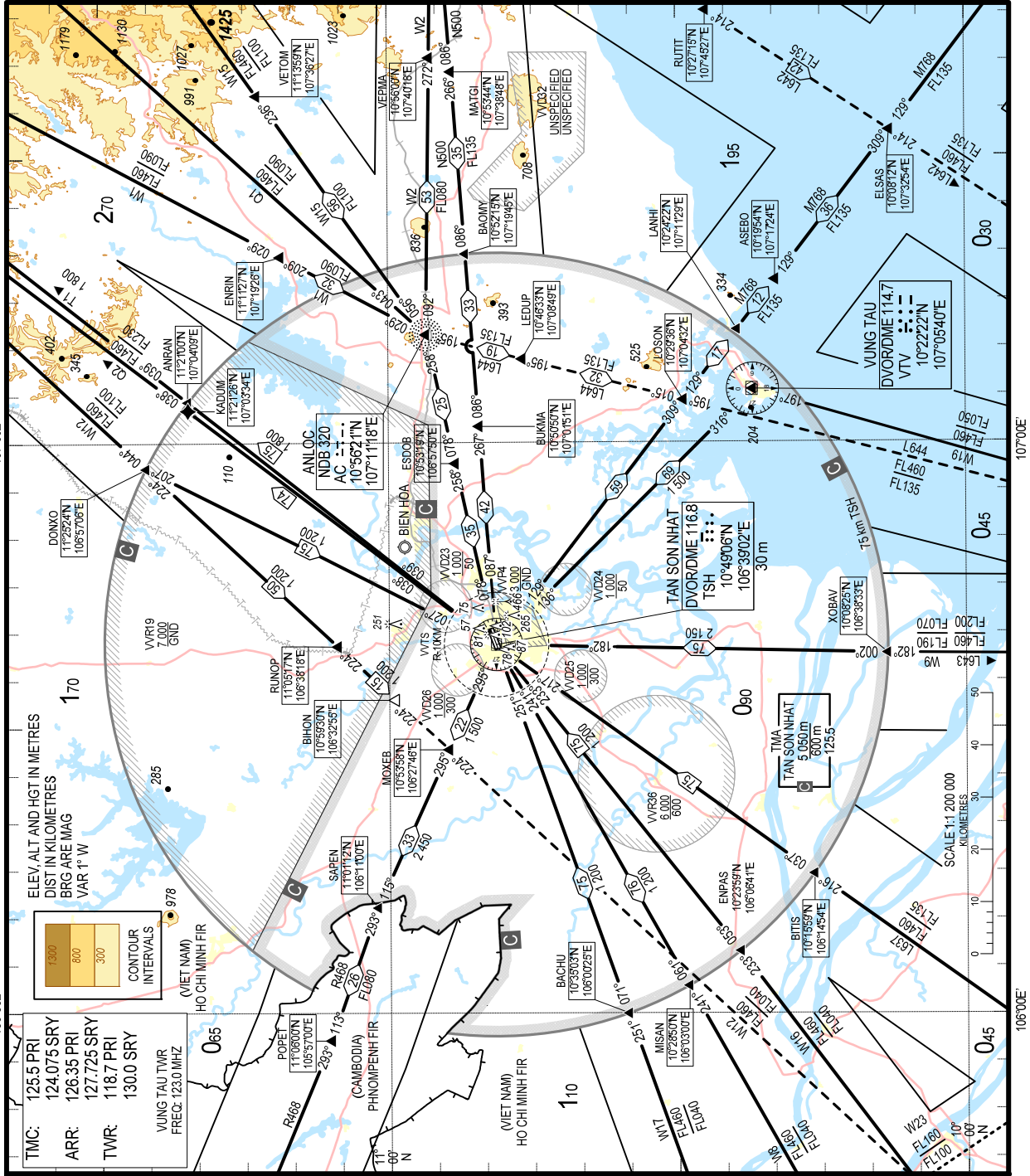


TMA TAN SON NHAT

AREA CHART - ICAO



TMC: 125.5 PRI
124.075 SRY
ARR: 126.35 PRI
127.725 SRY
TWR: 118.7 PRI
130.0 SRY

VUNG TAU TWR
FREQ: 123.0 MHz

(VIET NAM)
HO CHI MINH FIR

POPET (CAMBODIA)
11°07'00"N
105°57'00"E

PHNOMPENH FIR
11°13'29"N
106°11'00"E

LEGENDS	
CONTROL AREA (TMA) (AWY)	—
CONTROL ZONE (CTR)	-----
REPORTING POINT (COMPULSORY)	▲
REPORTING POINT (ON REQUEST)	△
WAYPOINT (COMPULSORY / FLY-BY)	◆
DEPARTURE/ARRIVAL ROUTING	—
TRANSIT ROUTE	---
ATS ROUTE NAME	W12
DISTANCE IN KILOMETRES LOWER LIMIT	1 200
MAGNETIC BEARING	223°
FIR BOUNDARY	---

RADIO NAVIGATION AID

NAME	TAN SON NHAT
TYPE AND FREQUENCY	DVORDME116.8
IDENT	TSH
COORDINATES (WGS-84)	10°49'06"N 106°39'02"E
ELEVATION OF DME ANTENNA	30 m

AREA MINIMUM ALTITUDE (AMA)

EACH 1° QUADRILATERAL CONTAINS AN AREA MINIMUM ALTITUDE (AMA) WHICH REPRESENTS THE LOWEST ALTITUDE WHICH MAY BE USED UNDER INSTRUMENT METEOROLOGICAL CONDITIONS (IMC). THE AMA PROVIDES A MINIMUM CLEARANCE OF 300 METRES (600 METRES IN MOUNTAINOUS AREAS) ABOVE ALL OBSTACLES IN THE QUADRILATERAL. IT IS REPRESENTED IN THOUSANDS AND TENS OF METRES ABOVE MEAN SEA LEVEL.

EXAMPLE: 1 700 METRES 170

CHANGES: REPLACEMENT OF TSN DVORDME (TSH), CUCH (MOXB), KANTA (ENPAS), LATHA (XOBV) AND RELATED DATA