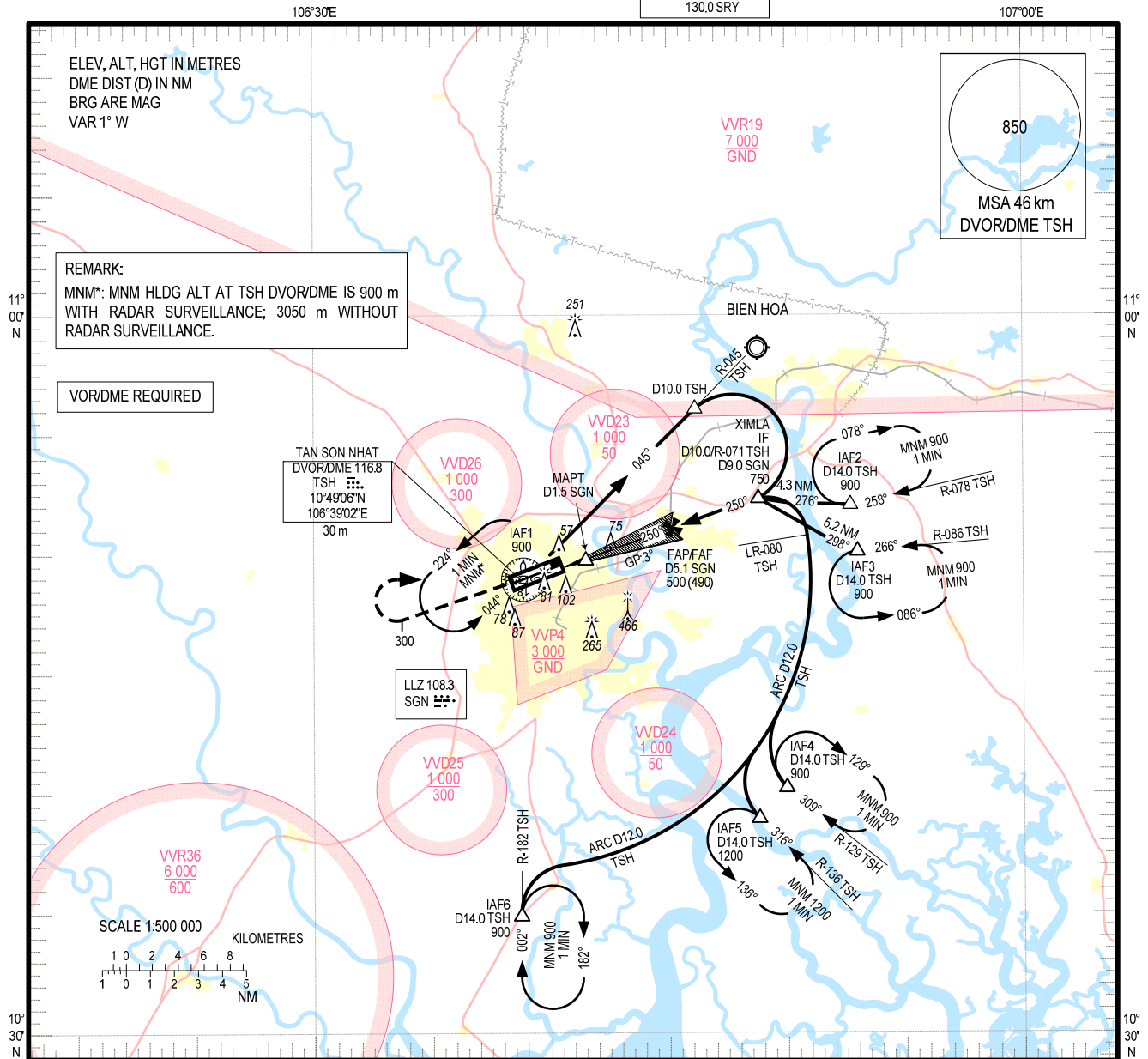


**INSTRUMENT  
APPROACH  
CHART – ICAO**

**AERODROME ELEV 10 m  
HEIGHTS RELATED TO  
THR RWY 25L – ELEV 10 m**

TMC: 125.5 PRI  
124.075 SRY  
ARR: 126.35 PRI  
127.725 SRY  
TWR: 118.7 PRI  
130.0 SRY

**HO CHI MINH/TAN SON NHAT INTL (VTAS)  
ILS Y RWY 25L**

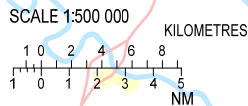


**REMARK:**  
MNM\*: MNM HLDG ALT AT TSH DVOR/DME IS 900 m WITH RADAR SURVEILLANCE; 3050 m WITHOUT RADAR SURVEILLANCE.

**VOR/DME REQUIRED**

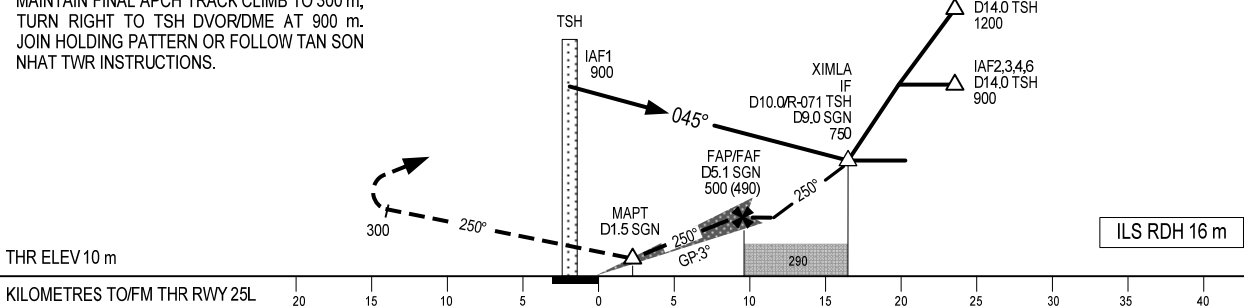
**TAN SON NHAT  
DVOR/DME 116.8  
TSH**  
10°49'06"N  
106°39'02"E  
30 m

**LLZ 108.3  
SGN**



**MISSED APPROACH:**  
MAINTAIN FINAL APCH TRACK CLIMB TO 300 m,  
TURN RIGHT TO TSH DVOR/DME AT 900 m.  
JOIN HOLDING PATTERN OR FOLLOW TAN SON  
NHAT TWR INSTRUCTIONS.

**TRANSITION ALTITUDE 5500**



THR ELEV 10 m

ILS RDH 16 m

OCA/H		A	B	C	D
STRAIGHT-IN APCH	CAT I	98 (88)	101 (91)	104 (94)	107 (97)
	GP INOP	155 (145)			
CIRCLING		200 (190)		300 (290)	

GS	km/h	150	200	250	300	350
FAF - MAPT 3.6 NM	min:s	2:38	1:58	1:35	1:19	1:08
ROD	m/s	2.2	2.9	3.6	4.4	5.1

CIRCLING IS ONLY IN THE NORTH OF RWY.

CHANGES: PROCEDURE, OCA/H AND RELATED DATA.