

**INSTRUMENT
APPROACH
CHART – ICAO**

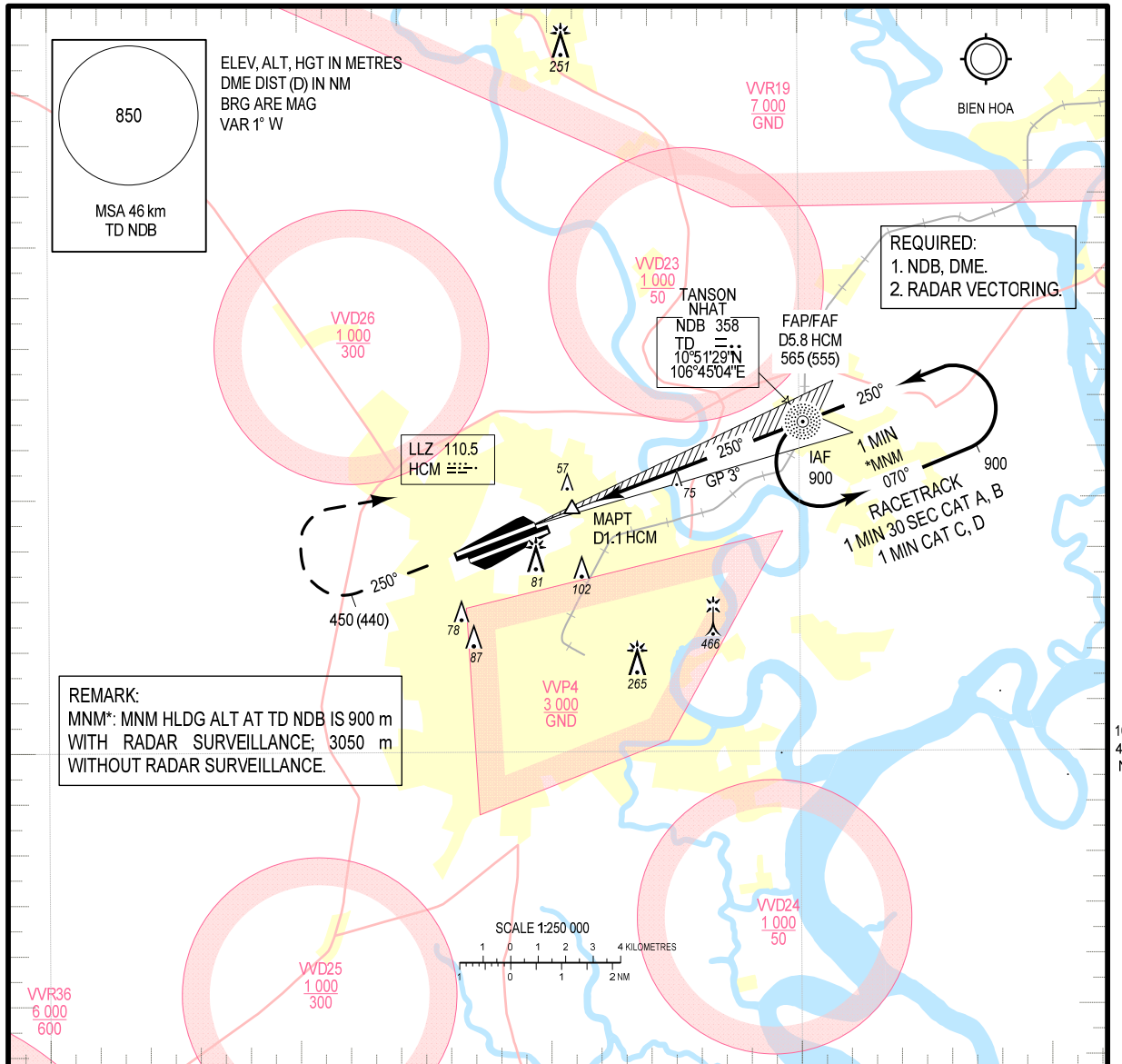
AERODROME ELEV 10 m
HEIGHTS RELATED TO
THR RWY 25R - ELEV 10 m

TMC: 125.5 PRI
124.075 SRY
ARR: 126.35 PRI
127.725 SRY
TWR: 118.7 PRI
130.0 SRY

**HO CHI MINH/TAN SON NHAT INTL (VVTS)
ILS Z RWY 25R**

106°30'E

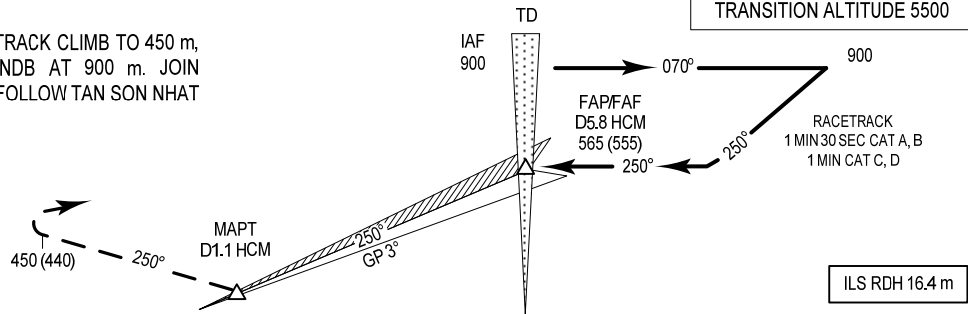
106°45'E



106°30'E

106°45'E

MISSED APPROACH:
MAINTAIN FINAL APCH TRACK CLIMB TO 450 m,
TURN RIGHT TO TD NDB AT 900 m. JOIN
HOLDING PATTERN OR FOLLOW TAN SON NHAT
TWR INSTRUCTIONS.



THR ELEV 10 m

KILOMETRES TO/FM THR RWY 25R

		OCA/H			
CAT		A	B	C	D
STRAIGHT IN APCH	CAT I	68 (58)	71 (61)	74 (64)	77 (67)
	GP INOP	155 (145)			
CIRCLING		200 (190)		300 (290)	

CIRCLING IS ONLY IN THE NORTH OF RWY.

GS	km/h	150	200	250	300	350
FAF - MAPT 4.7 NM	min:s	3:29	2:37	2:05	1:44	1:29
ROD	m/s	2.2	2.9	3.6	4.4	5.1

CHANGES: OCA/H AND RELATED DATA