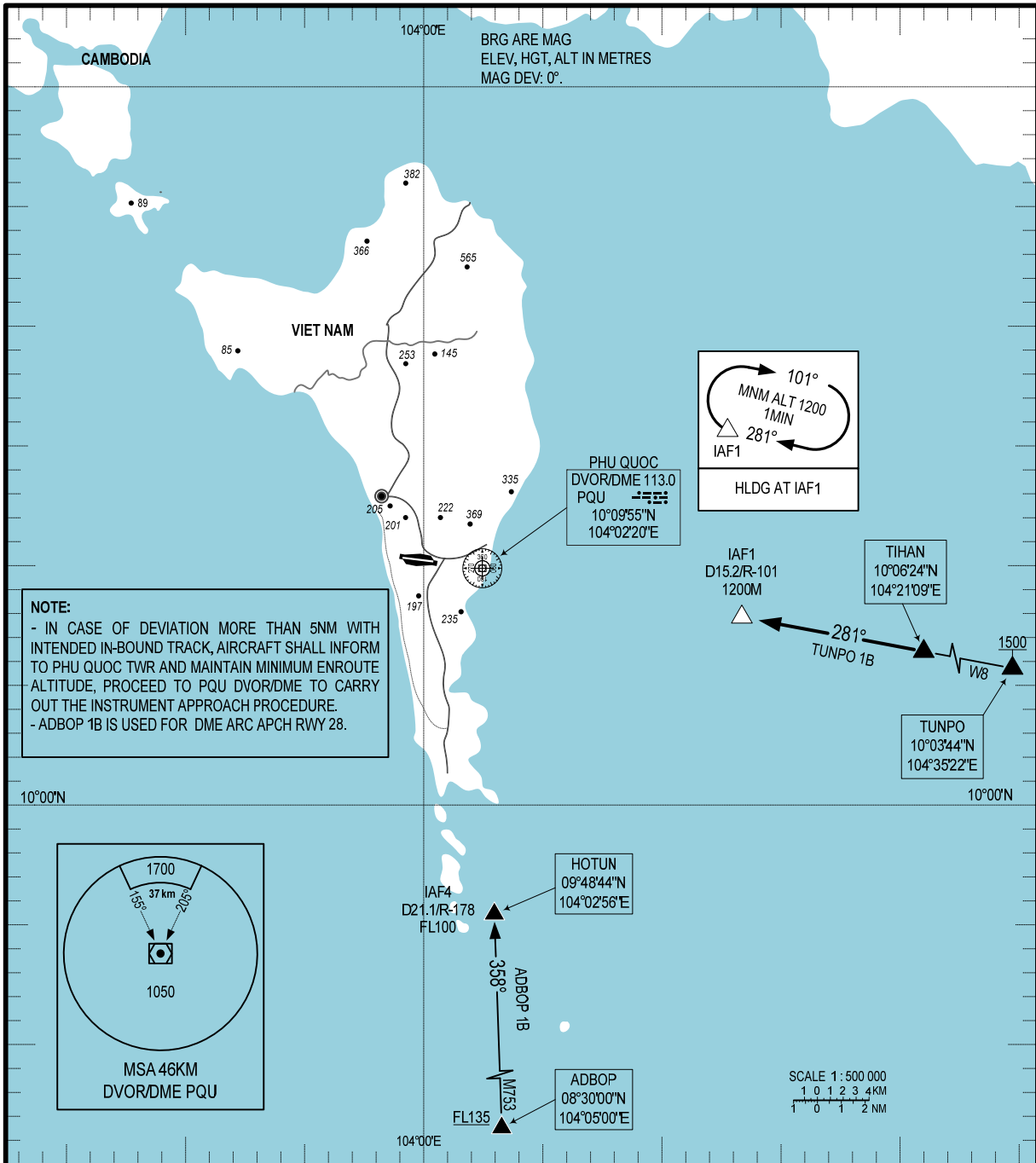


**STANDARD ARRIVAL CHART  
INSTRUMENT (STAR) - ICAO**

TRANSITIONAL ALTITUDE  
2750M

TWR: 118.6 PRI  
118.725 SRY

**KIEN GIANG/PHU QUOC INTL (VVPQ)  
RWY 28  
TUNPO 1B, ADBOP 1B**



**NOTE:**

- IN CASE OF DEVIATION MORE THAN 5NM WITH INTENDED IN-BOUND TRACK, AIRCRAFT SHALL INFORM TO PHU QUOC TWR AND MAINTAIN MINIMUM ENROUTE ALTITUDE, PROCEED TO PQU DVOR/DME TO CARRY OUT THE INSTRUMENT APPROACH PROCEDURE.
- ADBOP 1B IS USED FOR DME ARC APCH RWY 28.

**RWY 28**

- 1. TUNPO ONE BRAVO ARRIVAL (TUNPO 1B):** FROM TUNPO AT 1500M OR ABOVE, FLY ON TRACK 281° (PQU R-101) TO TIHAN THEN TO IAF1, DESCEND TO 1200M AT IAF1. EXPECT ONE OF FOLLOWING PROCEDURES: VOR, ILS RWY 28.
- 2. ADBOP ONE BRAVO ARRIVAL (ADBOP 1B):** FROM ADBOP AT FL135 OR ABOVE, FLY ON TRACK 358° (PQU R-178) TO HOTUN (IAF4) DESCEND TO FL100 AT IAF4. EXPECT ONE OF FOLLOWING PROCEDURES: VOR, ILS RWY 28.

CHANGE: ADDITION OF TWR'S SECONDARY FREQUENCY.