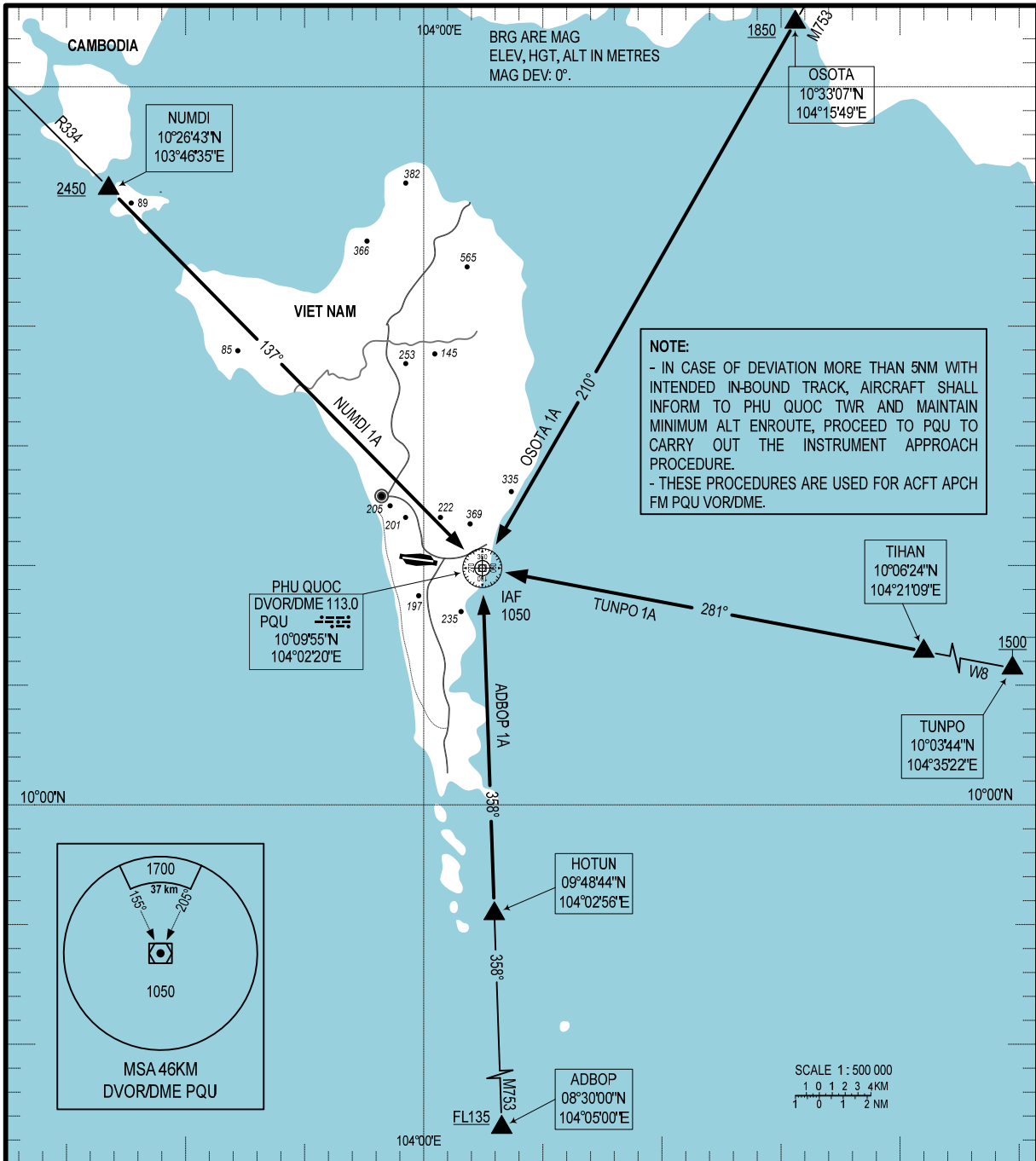


**STANDARD ARRIVAL CHART  
INSTRUMENT (STAR) - ICAO**

TRANSITIONAL ALTITUDE  
2750M

TWR: 118.6 PRI  
118.725 SRY

**KIEN GIANG/PHU QUOC INTL (VVPQ)  
RWY 10/28  
OSOTA 1A, NUMDI 1A,  
TUNPO 1A, ADBOP 1A**



**RWY 10/28**

- 1. OSOTA ONE ALPHA ARRIVAL (OSOTA 1A):** FROM OSOTA AT 1850M OR ABOVE, FLY ON TRACK 210° (PQU R-030), DESCEND TO 1050M AT PQU. EXPECT ONE OF FOLLOWING PROCEDURES: VOR, ILS RWY 10 OR VOR, ILS RWY 28.
- 2. TUNPO ONE ALPHA ARRIVAL (TUNPO 1A):** FROM TUNPO AT 1500M OR ABOVE, FLY ON TRACK 281° (PQU R-101) TO TIHAN THEN TO PQU, DESCEND TO 1050M AT PQU. EXPECT ONE OF FOLLOWING PROCEDURES: VOR, ILS RWY 10 OR VOR, ILS RWY 28.
- 3. ADBOP ONE ALPHA ARRIVAL (ADBOP 1A):** FROM ADBOP AT FL135 OR ABOVE, FLY ON TRACK 358° (PQU R-178) TO HOTUN THEN TO PQU, DESCEND TO 1050M AT PQU. EXPECT ONE OF FOLLOWING PROCEDURES: VOR, ILS RWY 10 OR VOR, ILS RWY 28.
- 4. NUMDI ONE ALPHA ARRIVAL (NUMDI 1A):** FROM NUMDI AT 2450M OR ABOVE, FLY ON TRACK 137° (PQU R-317) TO PQU, DESCEND TO 1050M AT PQU. EXPECT ONE OF FOLLOWING PROCEDURES: VOR, ILS RWY 10 OR VOR, ILS RWY 28.

CHANGE: ADDITION OF TWR'S SECONDARY FREQUENCY.