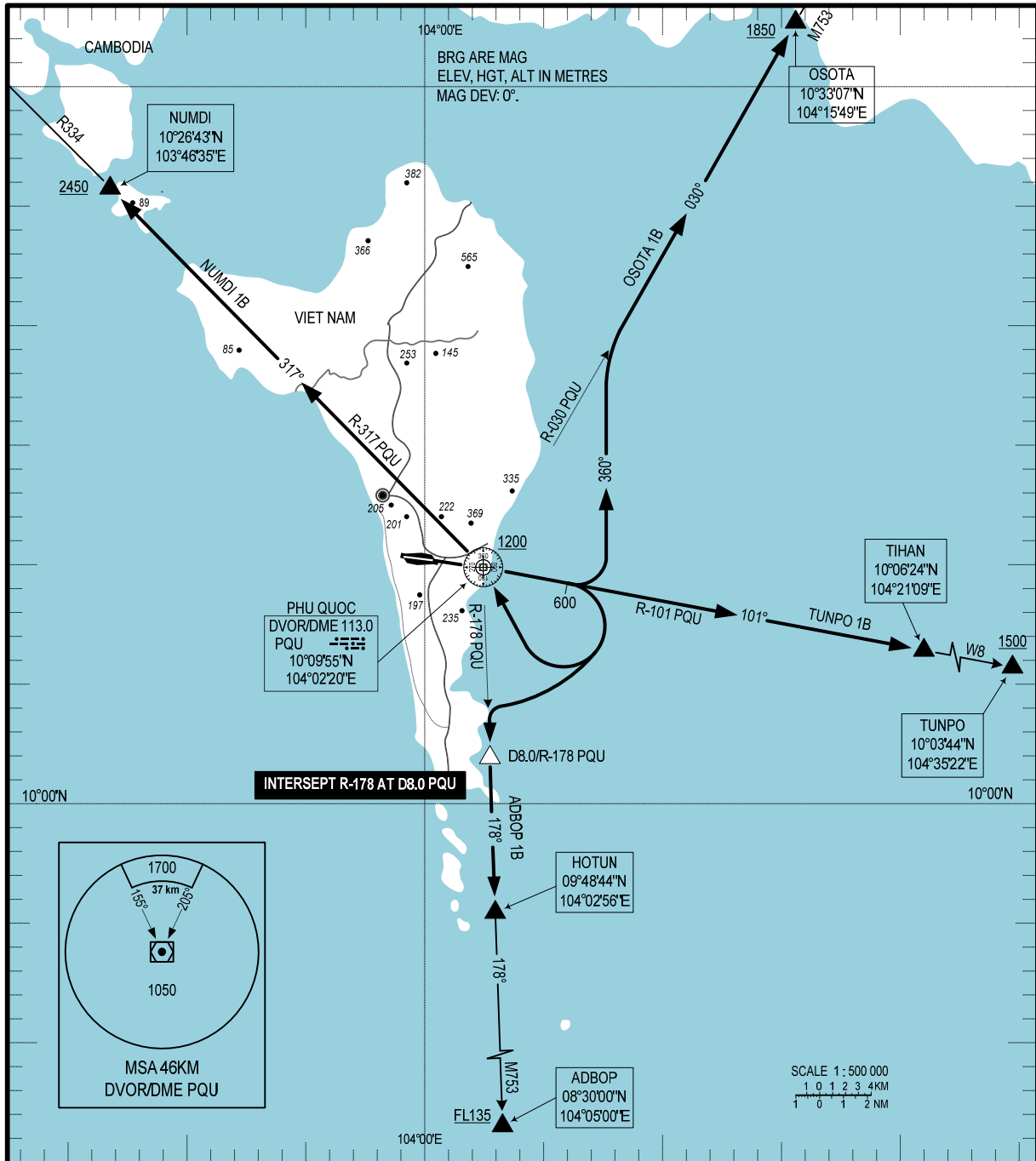


STANDARD DEPARTURE CHART
INSTRUMENT (SID) - ICAO

TRANSITIONAL ALTITUDE
2750M

TWR: 118.6 PRI
118.725 SRY

KIEN GIANG/PHU QUOC INTL (VVPQ)
RWY 10
OSOTA 1B, NUMDI 1B,
TUNPO 1B, ADBOP 1B



RWY 10

- 1. OSOTA ONE BRAVO DEPARTURE (OSOTA 1B):** AFTER TKOF, MNTN RWY HDG CLIMB TO 600M, TURN LEFT ON TRACK 360° TO INTERCEPT PQU R-030 TO OSOTA REACH 1850M OR ABOVE.
- 2. TUNPO ONE BRAVO DEPARTURE (TUNPO 1B):** AFTER TKOF, MNTN RWY HDG PASSING PQU, INTERCEPT PQU R-101 TO TIHAN, TUNPO REACH 1500M OR ABOVE AT TUNPO.
- 3. ADBOP ONE BRAVO DEPARTURE (ADBOP 1B):** AFTER TKOF, MNTN RWY HDG CLIMB TO 600M, TURN RIGHT TO INTERCEPT PQU R-178 AT D8.0 PQU TO HOTUN, ADBOP REACH FL135 OR ABOVE AT ADBOP
- 4. NUMDI ONE BRAVO DEPARTURE (NUMDI 1B):** AFTER TKOF, MNTN RWY HDG CLIMB TO 600M, TURN RIGHT PASSING PQU REACH 1200M OR ABOVE, INTERCEPT PQU R-317 TO NUMDI REACH 2450M OR ABOVE.

CHANGE: ADDITION OF TWR'S SECONDARY FREQUENCY.