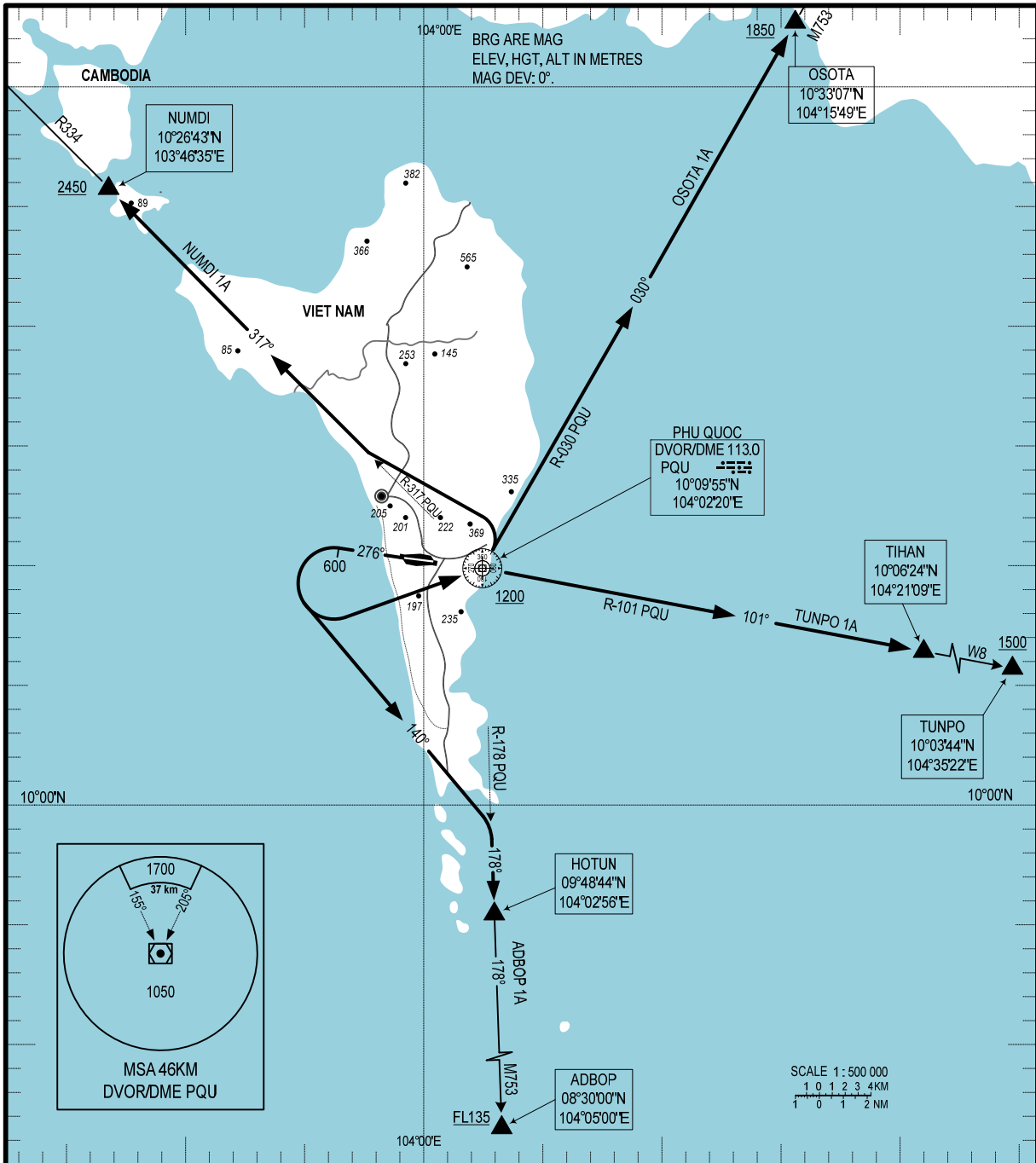


**STANDARD DEPARTURE CHART
INSTRUMENT (SID) - ICAO**

TRANSITIONAL ALTITUDE
2750M

TWR: 118.6 PRI
118.725 SRY

**KIEN GIANG/PHU QUOC INTL (VVPQ)
RWY 28
OSOTA 1A, NUMDI 1A,
TUNPO 1A, ADBOP 1A**



RWY 28

- 1. OSOTA ONE ALPHA DEPARTURE (OSOTA 1A):** AFTER TKOF, MNTN RWY HDG CLIMB TO 600M, TURN LEFT PASSING PQU REACH 1200M OR ABOVE, INTERCEPT PQU R-030 TO OSOTA REACH 1850M OR ABOVE.
- 2. TUNPO ONE ALPHA DEPARTURE (TUNPO 1A):** AFTER TKOF, MNTN RWY HDG CLIMB TO 600M, TURN LEFT PASSING PQU REACH 1200M OR ABOVE, INTERCEPT PQU R-101 TO TIHAN, TUNPO REACH 1500M OR ABOVE AT TUNPO
- 3. ADBOP ONE ALPHA DEPARTURE (ADBOP 1A):** AFTER TKOF, MNTN RWY HDG CLIMB TO 600M, TURN LEFT ON TRACK 140° TO INTERCEPT PQU R-178 TO HOTUN, ADBOP REACH FL135 OR ABOVE AT ADBOP.
- 4. NUMDI ONE ALPHA DEPARTURE (NUMDI 1A):** AFTER TKOF, MNTN RWY HDG CLIMB TO 600M, TURN LEFT PASSING PQU REACH 1200M OR ABOVE, CONTINUE TO TURN LEFT TO INTERCEPT PQU R-317 TO NUMDI REACH 2450M OR ABOVE.

CHANGE: ADDITION OF TWR'S SECONDARY FREQUENCY.