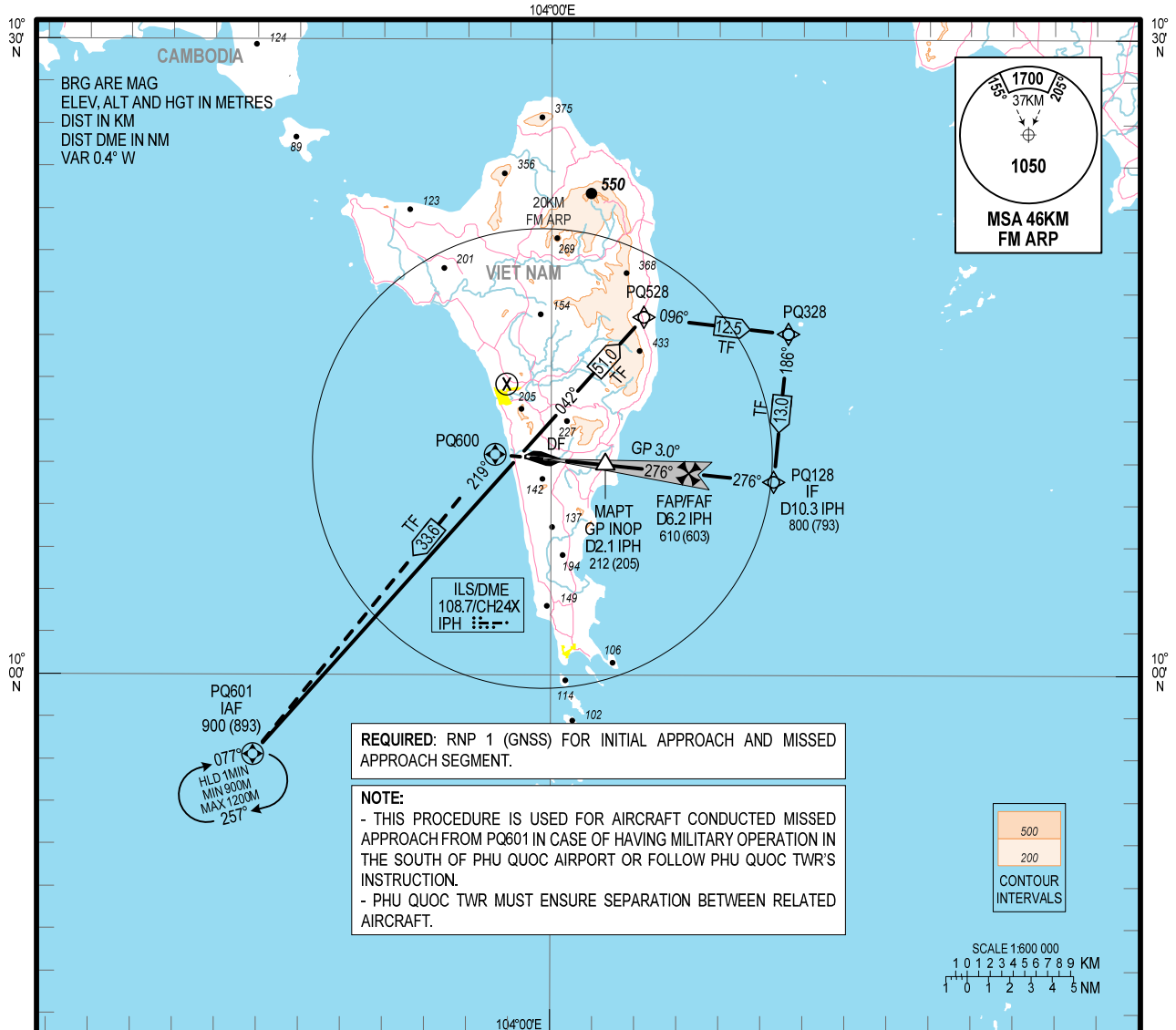


**INSTRUMENT
APPROACH
CHART - ICAO**

AERODROME ELEV: 7M
HEIGHTS RELATED TO
THR RWY 28 - ELEV 7M

TWR: 118.6 PRI
118.725 SRY

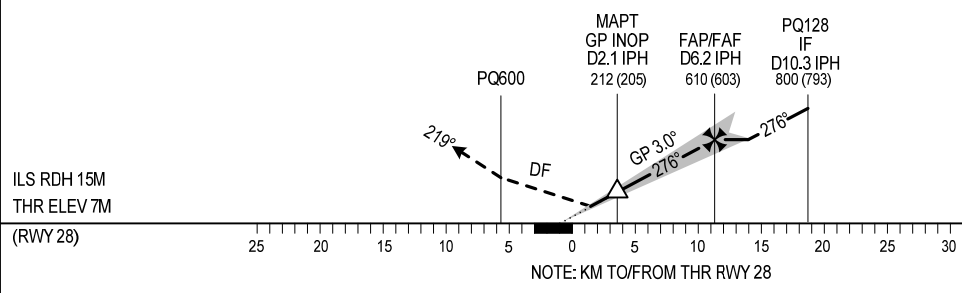
**KIEN GIANG/PHU QUOC INTL (VVPQ)
ILS X RWY 28**



NOTE:
 - THIS PROCEDURE IS USED FOR AIRCRAFT CONDUCTED MISSED APPROACH FROM PQ601 IN CASE OF HAVING MILITARY OPERATION IN THE SOUTH OF PHU QUOC AIRPORT OR FOLLOW PHU QUOC TWR'S INSTRUCTION.
 - PHU QUOC TWR MUST ENSURE SEPARATION BETWEEN RELATED AIRCRAFT.

TRANSITION ALT: 2750M

MISSED APPROACH:
 CLIMB UNTIL PASSING PQ600, TURN LEFT TO PQ601 REACH 900M (893M), JOIN HOLDING PATTERN, OR FOLLOW PHU QUOC TWR'S INSTRUCTIONS.



OCA (H)		A	B	C	D
STRAIGHT-IN APPROACH	CAT I	112 (105)	115 (108)	118 (111)	122 (115)
	GP INOP	212 (205)			
CIRCLING		NOT AUTHORIZED			

GS	KM/H	100	150	200	250	300	350
FAF - MAPT 7.6KM	MIN:S	4:33	3:02	2:17	1:49	1:31	1:18
RATE OF DESCENT	M/S	1.46	2.18	2.91	3.64	4.37	5.09
DME	NM	6.2	5	4	3	2.1	
HGT	M	603	486	389	291	205	