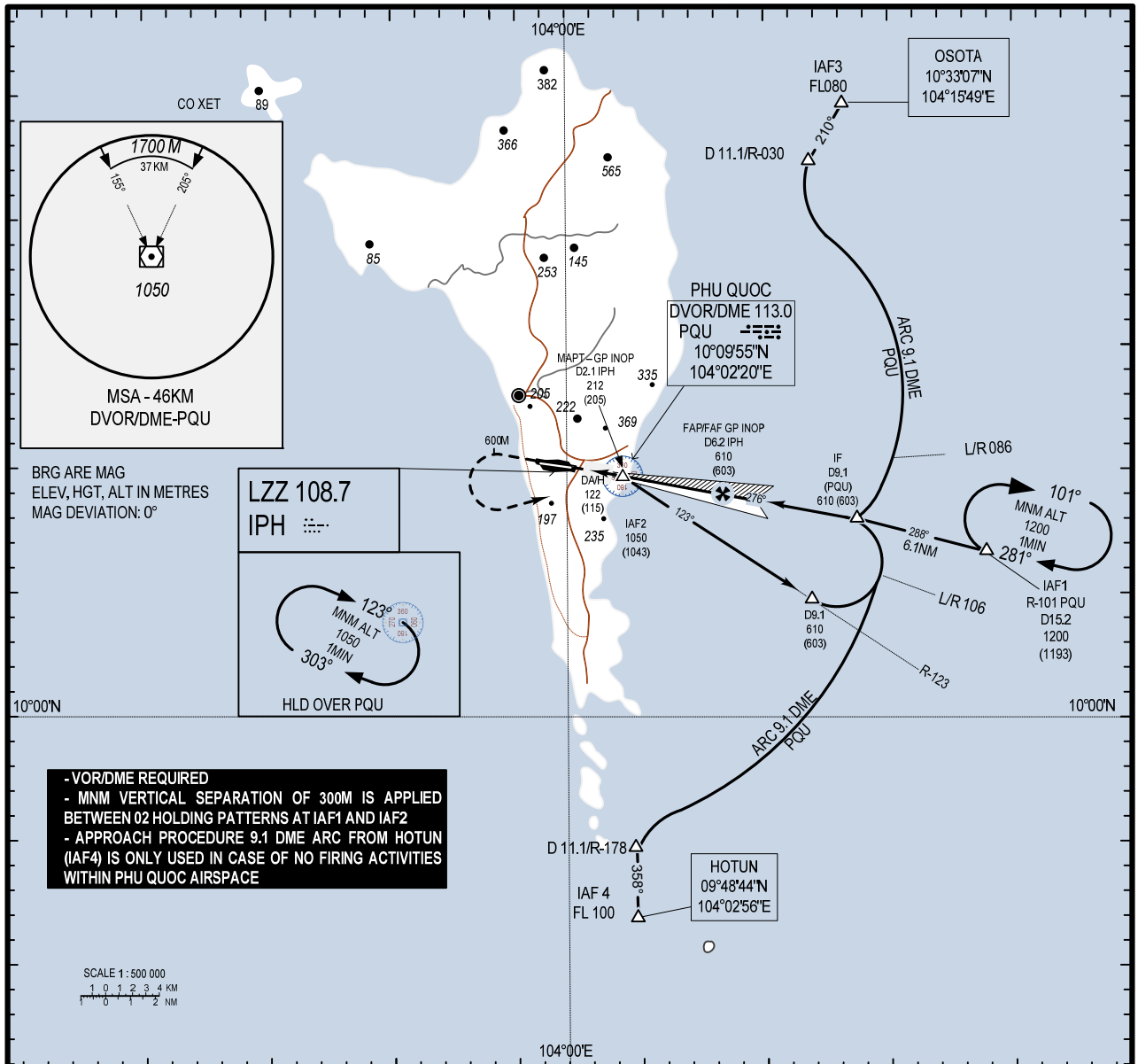


**INSTRUMENT
APPROACH
CHART - ICAO**

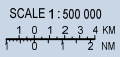
**AERODROME ELEV 7M
HEIGHTS RELATED TO
THR RWY 28 - ELEV 7 M**

**TWR: 118.6 PRI
118.725 SRY**

**KIEN GIANG/PHU QUOC INTL (VVPQ)
ILS RWY 28**



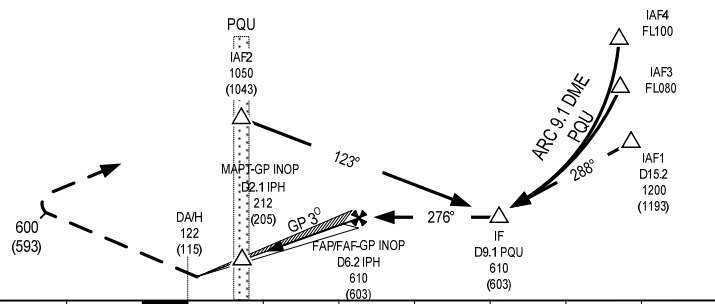
- VOR/DME REQUIRED
- MNM VERTICAL SEPARATION OF 300M IS APPLIED BETWEEN 02 HOLDING PATTERNS AT IAF1 AND IAF2
- APPROACH PROCEDURE 9.1 DME ARC FROM HOTUN (IAF4) IS ONLY USED IN CASE OF NO FIRING ACTIVITIES WITHIN PHU QUOC AIRSPACE



TRANSITION LEVEL: FL100

MISSED APPROACH:
MAINTAIN FINAL APPROACH TRACK CLIMB TO 1050M, PASSING 600M TURN LEFT TO PQU TO JOIN HOLDING PATTERN OR FOLLOW ATC INSTRUCTION.

THR ELEV RWY 28: 7 M



DISTANCE FAF - MAPT GP INOP: 4.1NM (7593M)

DA/H: 122/115; VIS = 1100M				
OCA/H	A	B	C	D
STRAIGHT-IN APPROACH CAT I	112(105)	115(108)	118(111)	122(115)
GP INOP	212(205)			
CIRCLING	NOT BE ALLOWED			

SPEED (KM/H)	100	150	200	250	300	350
TIME (MIN)	4:33	3:02	2:17	1:49	1:31	1:18
RATE OF DESCENT (MS)	1.46	2.18	2.91	3.64	4.37	5.09

DME(GP/DME)	6.2	5	4	3	2.1
HEIGHT (M)	603	486	389	291	205

CHANGE: ADDITION OF TWR'S SECONDARY FREQUENCY.