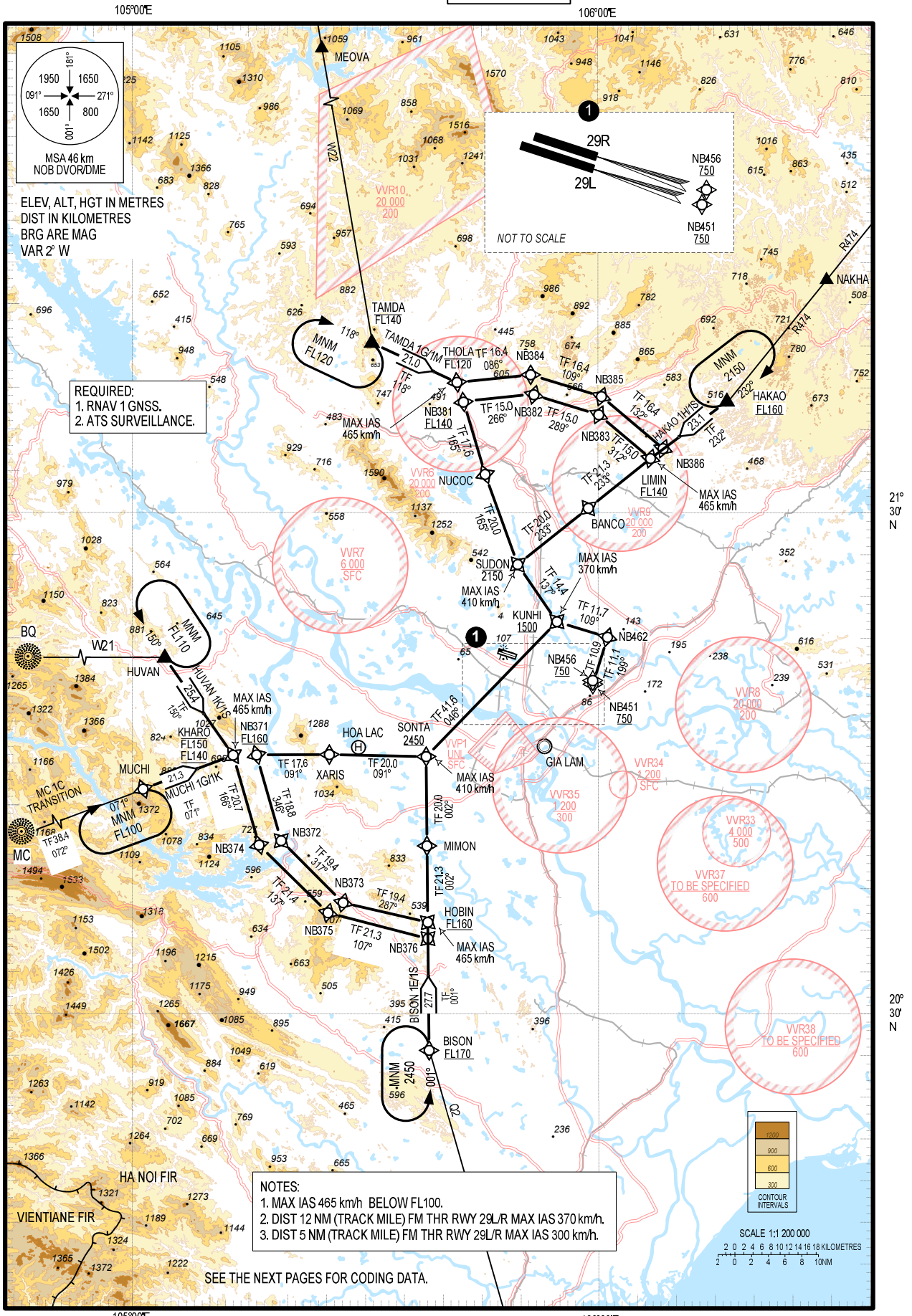


**STANDARD ARRIVAL CHART -  
INSTRUMENT (STAR) – ICAO  
(OVERLAY TO RADAR VECTOR PATTERN)**

TRANSITION ALTITUDE  
2750 m

TMC:	125.1 PRI
	126.575 SRY
ARR:	121.0 PRI
	120.075 SRY
TWR:	118.4 PRI
	118.9 SRY

**HA NOI/NOI BAI INTL (VVNB)  
RNAV RWY 29L/R  
TAMDA 1G/M, HAKAO 1H/S,  
BISON 1E/S, MUCHI 1G/1K, HUVAN 1K/1S**



REQUIRED:  
1. RNAV 1GNSS.  
2. ATS SURVEILLANCE.

NOTES:  
1. MAX IAS 465 km/h BELOW FL100.  
2. DIST 12 NM (TRACK MILE) FM THR RWY 29L/R MAX IAS 370 km/h.  
3. DIST 5 NM (TRACK MILE) FM THR RWY 29L/R MAX IAS 300 km/h.

CHANGES: VAR, MAG BRG, REQUIRED SURVEILLANCE, ADDN OF TAMDA 1M,  
HAKAO 1S, BISON 1S, MUCHI 1K, HUVAN 1S AND RESTRICTED AREAS.

SEE THE NEXT PAGES FOR CODING DATA.