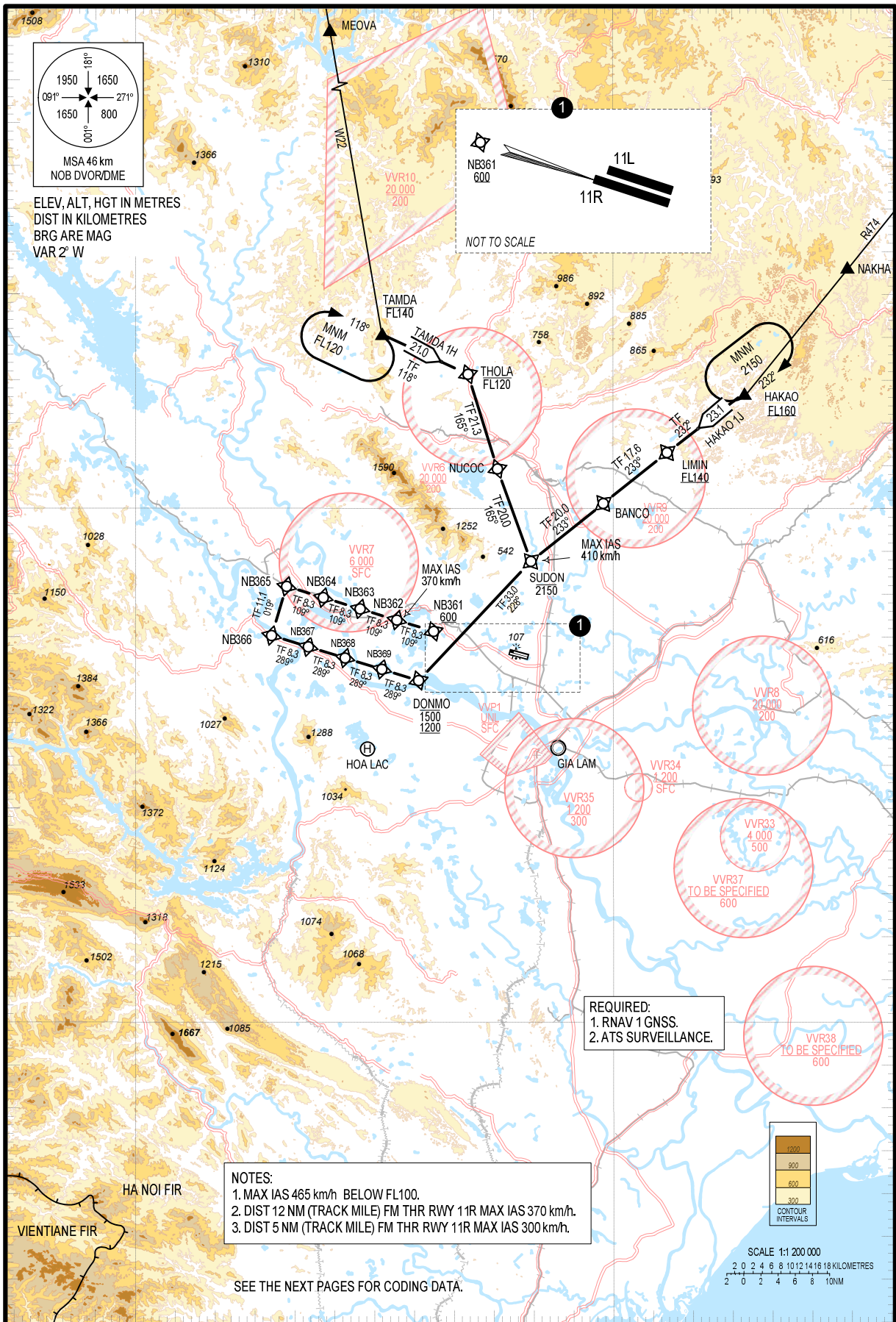


**STANDARD ARRIVAL CHART -
INSTRUMENT (STAR) – ICAO
(OVERLAY TO RADAR VECTOR PATTERN)**

TRANSITION ALTITUDE
2750m

TMC: 125.1 PRI
126.575 SRY
ARR: 121.0 PRI
120.075 SRY
TWR: 118.4 PRI
118.9 SRY

**HA NOI/NOI BAI INTL (VVNB)
RNAV RWY 11R
TAMDA 1H, HAKAO 1J**



CHANGES: VAR. MAG BRG. REQUIRED SURVEILLANCE. ADDN OF RESTRICTED AREAS.

NOTES:
1. MAX IAS 465 km/h BELOW FL100.
2. DIST 12 NM (TRACK MILE) FM THR RWY 11R MAX IAS 370 km/h.
3. DIST 5 NM (TRACK MILE) FM THR RWY 11R MAX IAS 300 km/h.

REQUIRED:
1. RNAV 1 GNSS.
2. ATS SURVEILLANCE.

SEE THE NEXT PAGES FOR CODING DATA.