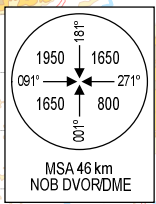
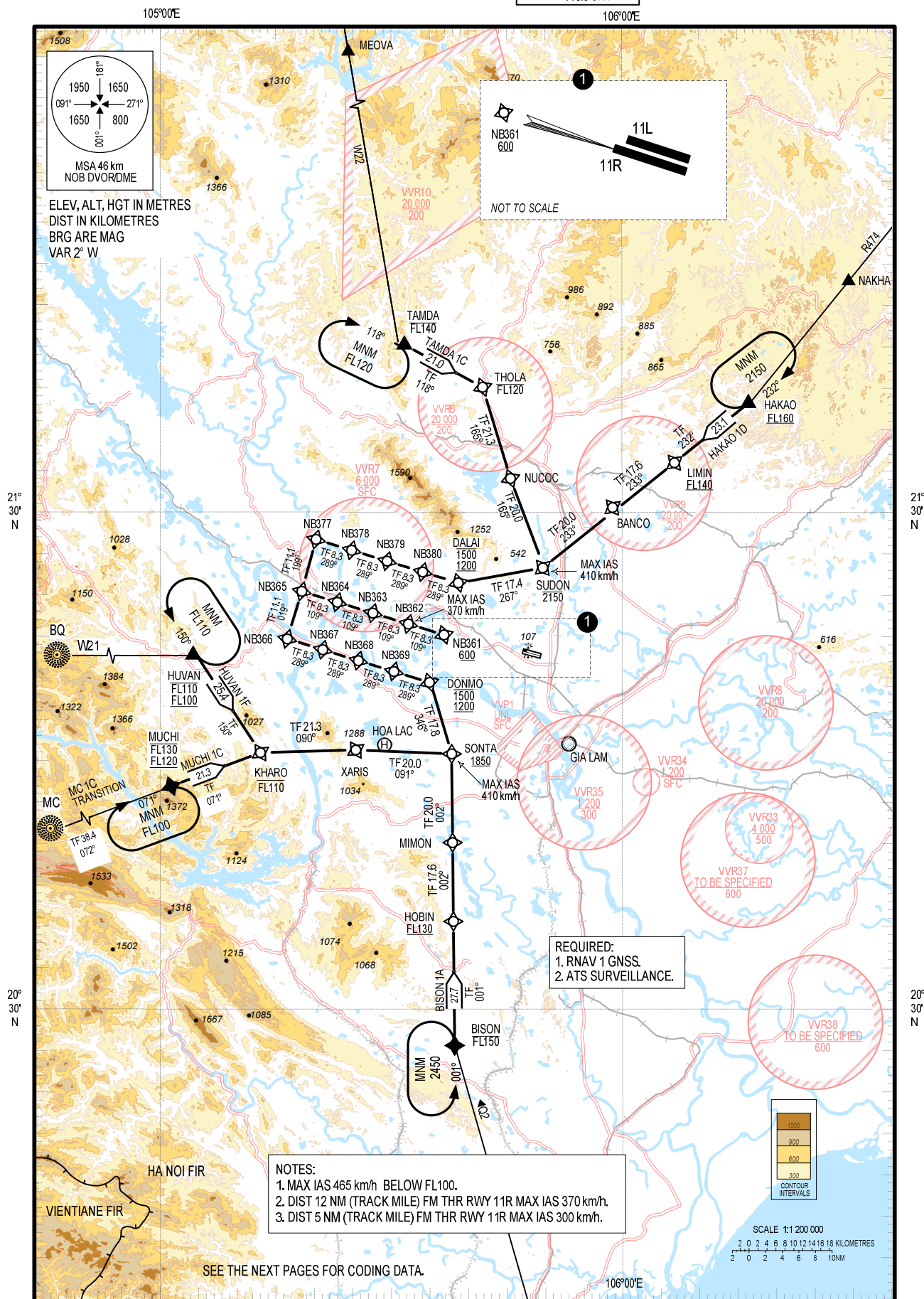


**STANDARD ARRIVAL CHART -  
INSTRUMENT (STAR) – ICAO  
(OVERLAY TO RADAR VECTOR PATTERN)**

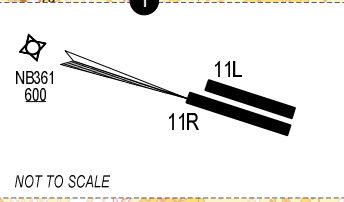
TRANSITION ALTITUDE  
2750 m

TMC:	125.1 PRI
	126.575 SRY
ARR:	121.0 PRI
	120.075 SRY
TWR:	118.4 PRI
	118.9 SRY

**HA NOI/NOI BAI INTL (VVNB)  
RNAV RWY 11R  
TAMDA 1C, HAKAO 1D,  
BISON 1A, MUCHI 1C, HUVAN 1F**



ELEV, ALT, HGT IN METRES  
DIST IN KILOMETRES  
BRG ARE MAG  
VAR 2° W



REQUIRED:  
1. RNAV 1 GNSS.  
2. ATS SURVEILLANCE.

NOTES:  
1. MAX IAS 465 km/h BELOW FL100.  
2. DIST 12 NM (TRACK MILE) FM THR RWY 11R MAX IAS 370 km/h.  
3. DIST 5 NM (TRACK MILE) FM THR RWY 11R MAX IAS 300 km/h.

SEE THE NEXT PAGES FOR CODING DATA.

CHANGES: VAR. MAG BRG. REQUIRED SURVEILLANCE. ADDN OF RESTRICTED AREAS.