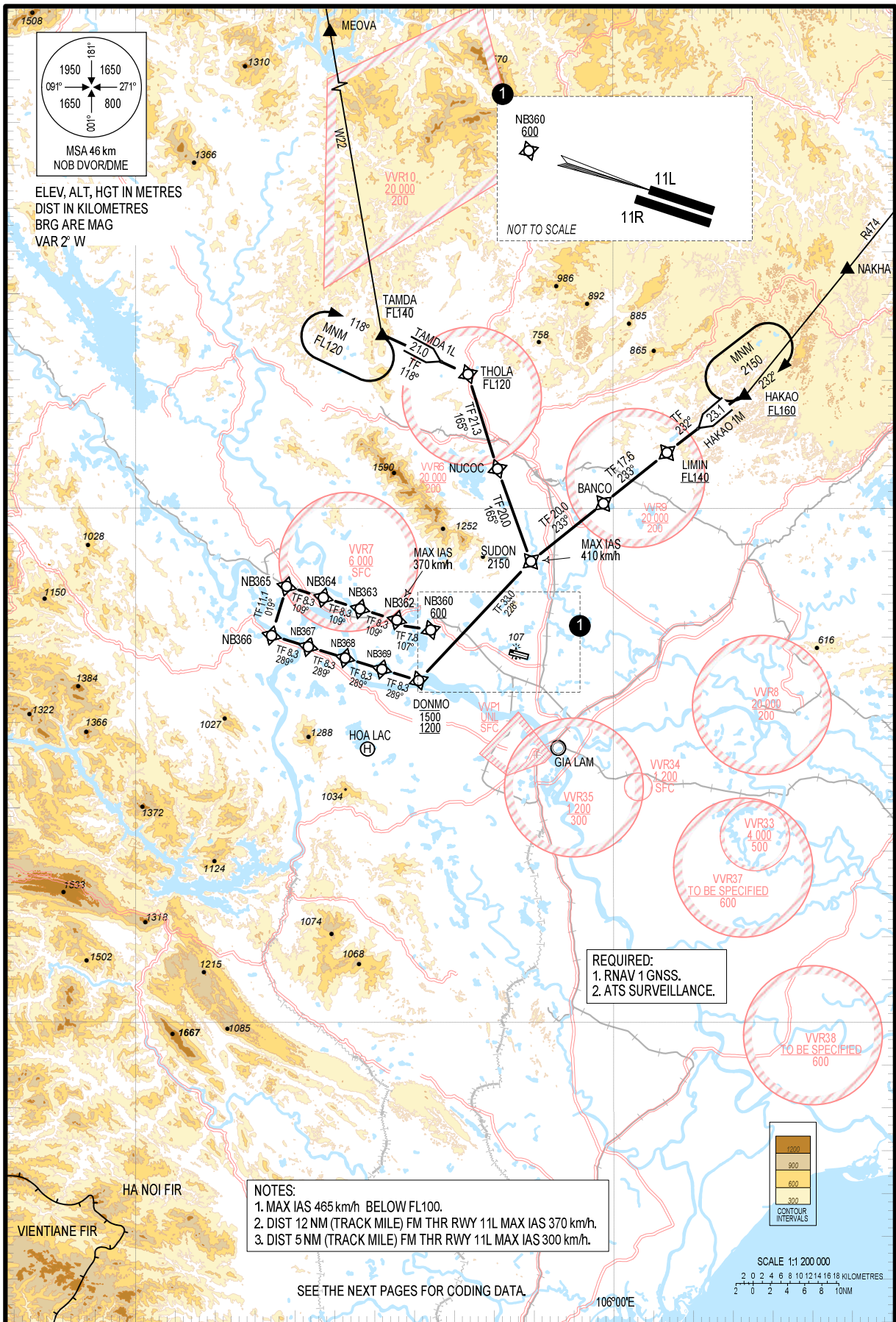


**STANDARD ARRIVAL CHART -
INSTRUMENT (STAR) - ICAO
(OVERLAY TO RADAR VECTOR PATTERN)**

TRANSITION ALTITUDE
2750 m

TMC: 125.1 PRI
126.575 SRY
ARR: 121.0 PRI
120.075 SRY
TWR: 118.4 PRI
118.9 SRY

**HA NOI/NOI BAI INTL (VVNB)
RNAV RWY 11L
TAMDA 1L, HAKAO 1M**



CHANGES: VAR. IMAG BRG. REQUIRED SURVEILLANCE. ADDN OF RESTRICTED AREAS.

NOTES:
1. MAX IAS 465 km/h BELOW FL100.
2. DIST 12 NM (TRACK MILE) FM THR RWY 11L MAX IAS 370 km/h.
3. DIST 5 NM (TRACK MILE) FM THR RWY 11L MAX IAS 300 km/h.

SEE THE NEXT PAGES FOR CODING DATA.