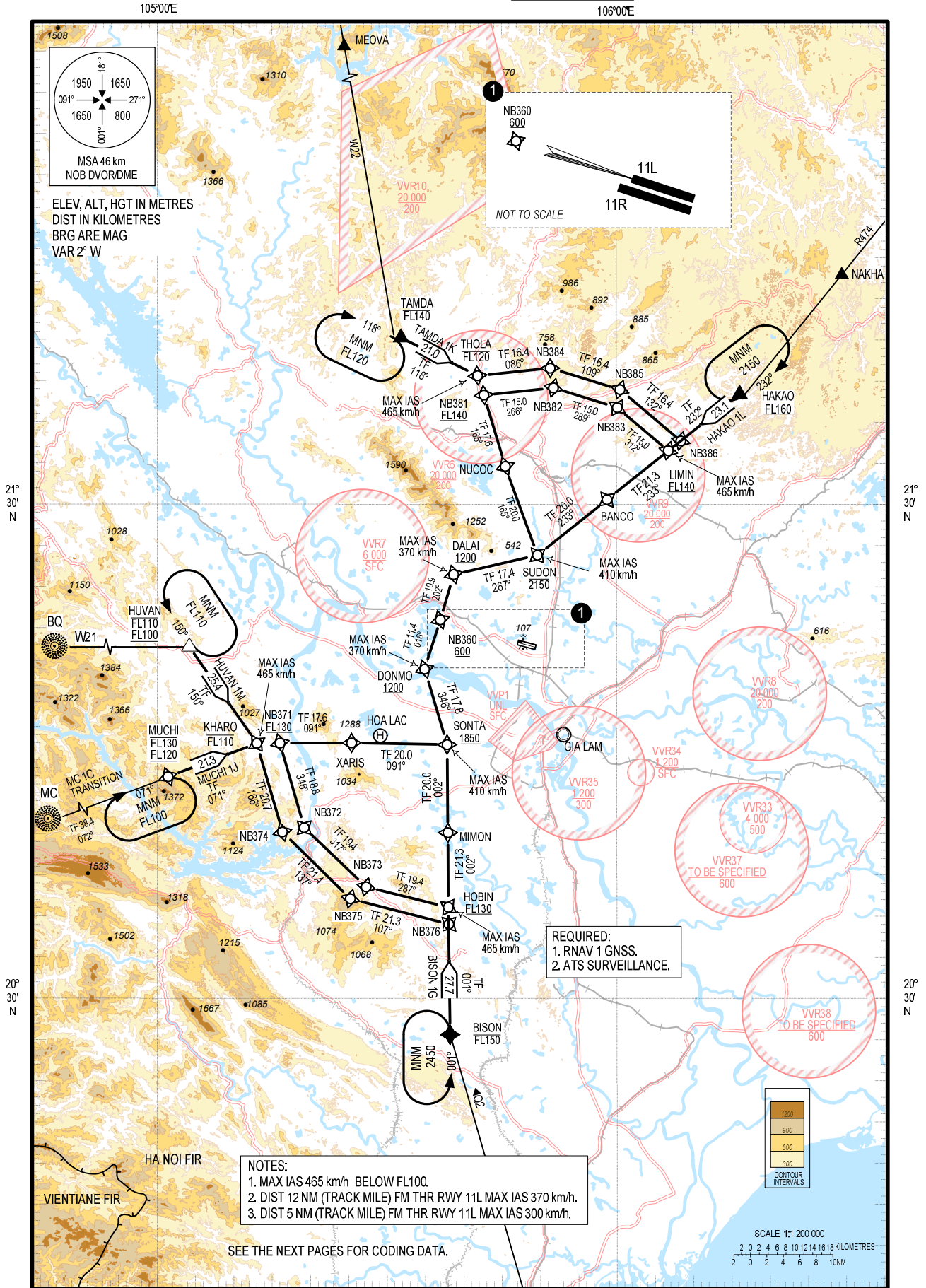


**STANDARD ARRIVAL CHART -
INSTRUMENT (STAR) – ICAO
(OVERLAY TO RADAR VECTOR PATTERN)**

TRANSITION ALTITUDE
2750 m

TMC:	125.1 PRI
	126.575 SRY
ARR:	121.0 PRI
	120.075 SRY
TWR:	118.4 PRI
	118.9 SRY

**HA NOI/NOI BAI INTL (VVNB)
RNAV Rwy 11L
TAMDA 1K, HAKAO 1L,
BISON 1G, MUCHI 1J, HUVAN 1M**



CHANGES: VAR, MAG BRG, REQUIRED SURVEILLANCE, ADDN OF RESTRICTED AREAS.

NOTES:
 1. MAX IAS 465 km/h BELOW FL100.
 2. DIST 12 NM (TRACK MILE) FM THR RWY 11L MAX IAS 370 km/h.
 3. DIST 5 NM (TRACK MILE) FM THR RWY 11L MAX IAS 300 km/h.

SEE THE NEXT PAGES FOR CODING DATA.

