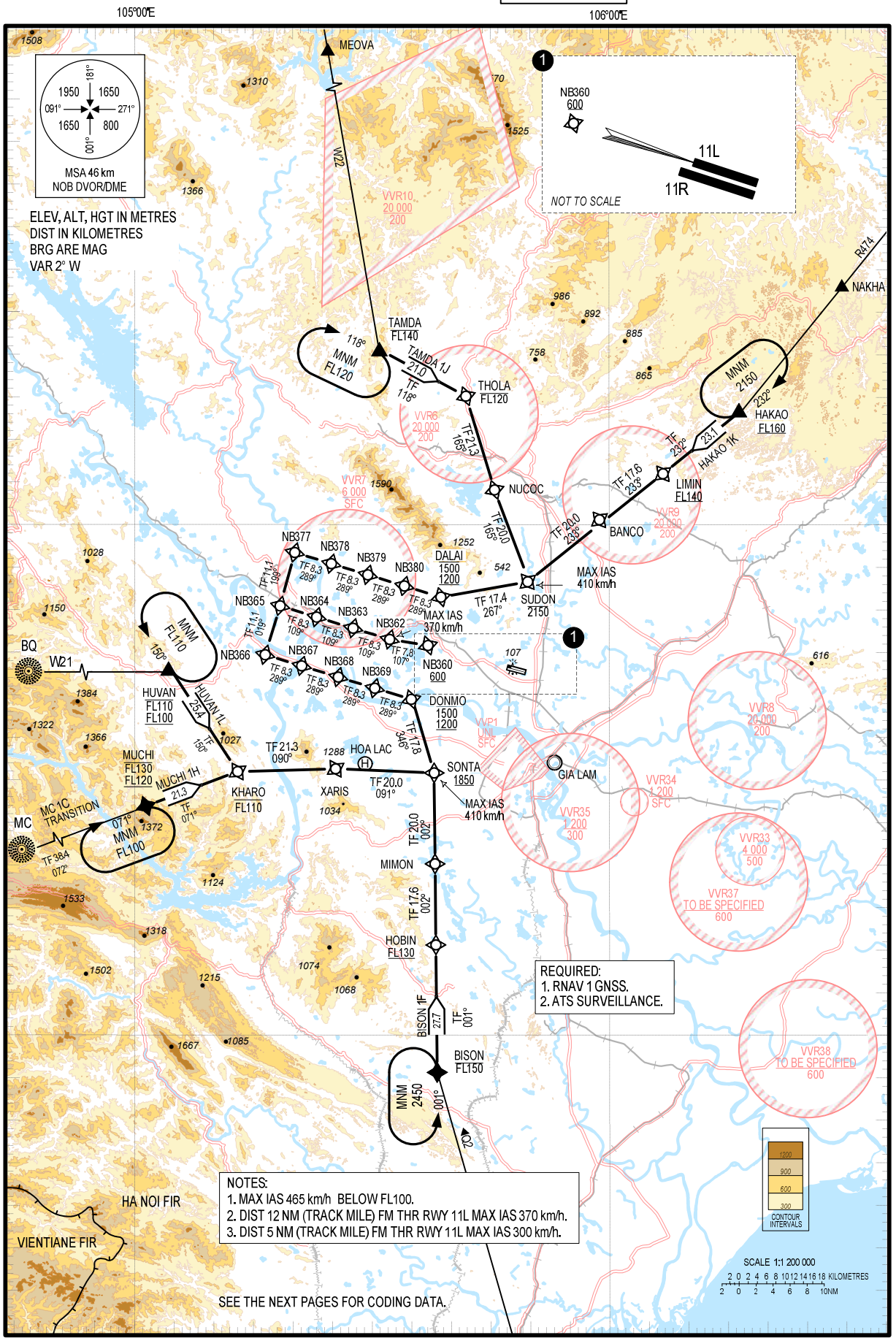


**STANDARD ARRIVAL CHART -
INSTRUMENT (STAR) – ICAO
(OVERLAY TO RADAR VECTOR PATTERN)**

TRANSITION ALTITUDE
2750 m

TMC:	125.1 PRI
	126.575 SRY
ARR:	121.0 PRI
	120.075 SRY
TWR:	118.4 PRI
	118.9 SRY

**HA NOI/NOI BAI INTL (VVNB)
RNAV RWY 11L
TAMDA 1J, HAKAO 1K,
BISON 1F, MUCHI 1H, HUVAN 1L**



CHANGES: VAR. MAG BRG. REQUIRED SURVEILLANCE. ADDN OF RESTRICTED AREAS.

- NOTES:**
1. MAX IAS 465 km/h BELOW FL100.
 2. DIST 12 NM (TRACK MILE) FM THR RWY 11L MAX IAS 370 km/h.
 3. DIST 5 NM (TRACK MILE) FM THR RWY 11L MAX IAS 300 km/h.

REQUIRED:
1. RNAV 1GNSS.
2. ATS SURVEILLANCE.

SEE THE NEXT PAGES FOR CODING DATA.