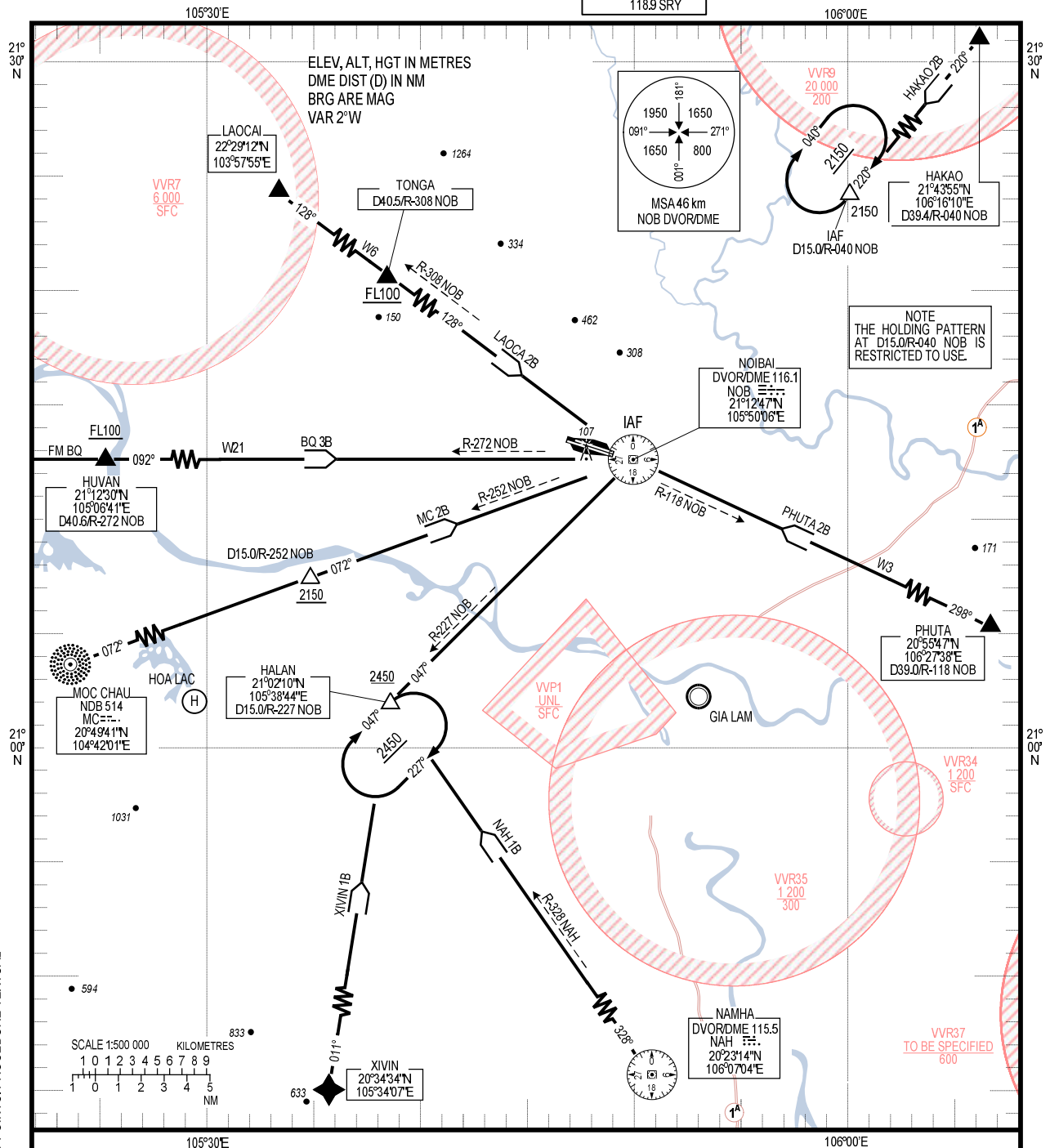


**STANDARD ARRIVAL CHART –
INSTRUMENT (STAR) – ICAO**

TRANSITION ALTITUDE
2750 m

TMC: 125.1 PRI
126.575 SRY
ARR: 121.0 PRI
120.075 SRY
TWR: 118.4 PRI
118.9 SRY

**HA NOI/NOI BAI INTL (VVNB)
RWY 29L/R
HAKAO 2B, NAH 1B, MC 2B
LAOCA 2B, BQ 3B, PHUTA 2B, XIVIN 1B**



CHANGES: VAR, MAG BRG, POSITION INFO OF SIGNIFICANT POINTS, PROCEDURE TEXTUAL DESCRIPTION, ADDN OF RESTRICTED AREAS.

- RWY 29L/R**
- XIVIN ONE BRAVO ARRIVAL (XIVIN 1B): FROM XIVIN FLY ON TRACK 011° TO HALAN (D15.0/R-227 NOB) AT 2450 m OR ABOVE, TURN RIGHT ON R-227 NOB TO IAF (NOB) AT 1500 m.
 - HAKAO TWO BRAVO ARRIVAL (HAKAO 2B): FROM HAKAO FLY ON R-040 NOB TO IAF (D15.0 NOB) AT 2150 m. IN CASE OF NOT BEING APPROVED, FLY TO IAF (NOB) AT 2150 m OR ABOVE.
 - NAMHA ONE BRAVO ARRIVAL (NAH 1B): FROM NAH FLY ON R-328 NAH TO HALAN (D15.0/R-227 NOB) AT 2450 m OR ABOVE, TURN RIGHT ON R-227 NOB TO IAF (NOB) AT 1500 m.
 - MOCCHAU TWO BRAVO ARRIVAL (MC 2B): FROM MC FLY ON R-252 NOB TO D15.0 NOB AT 2150 m OR ABOVE, CONTINUE FLYING TO IAF (NOB) AT 1500 m OR ABOVE.
 - LAOCAI TWO BRAVO ARRIVAL (LAOCA 2B): FROM LAOCAI FLY ON W6 (R-308 NOB) TO TONGA (D40.5/R-308 NOB) AT FL100 OR ABOVE, CONTINUE FLYING TO IAF (NOB) AT 1850 m OR ABOVE.
 - NASAN THREE BRAVO ARRIVAL (BQ 3B): FROM BQ FLY ON W21 (R-272 NOB) TO HUVAN AT FL100 OR ABOVE, CONTINUE FLYING TO IAF (NOB) AT 1850 m OR ABOVE.
 - PHUTA TWO BRAVO ARRIVAL (PHUTA 2B): FROM PHUTA FLY ON W3 (R-118 NOB) TO IAF (NOB) AT 1500 m OR ABOVE. (NOTE: ONLY USED IN CASE VVNB AND VVCI ARE ALTERNATE AERODROMES FOR EACH OTHER).