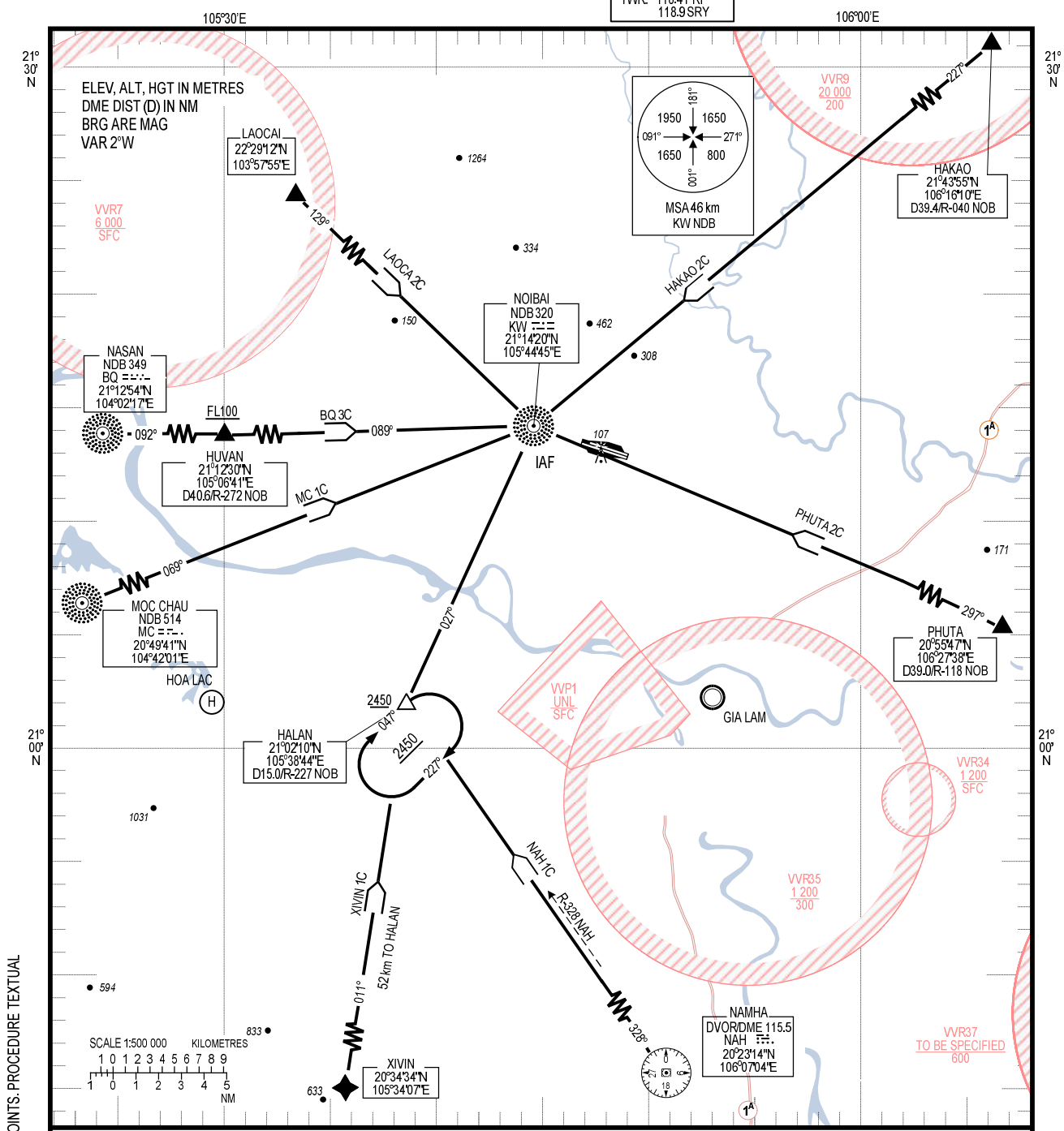


**STANDARD ARRIVAL CHART –
INSTRUMENT (STAR) – ICAO**

TRANSITION ALTITUDE
2750 m

TMC: 125.1 PRI
126.575 SRY
ARR: 121.0 PRI
120.075 SRY
TWR: 118.4 PRI
118.9 SRY

**HA NOI/NOI BAI INTL (VVNB)
RWY 11L/29R
HAKAO 2C, NAH 1C, MC 1C
LAOCA 2C, BQ 3C, PHUTA 2C, XIVIN 1C**



CHANGES: VAR, MAG BRG, POSITION INFO OF SIGNIFICANT POINTS, PROCEDURE TEXTUAL DESCRIPTION, ADDN OF RESTRICTED AREAS.

- RWY 11L/29R**
1. XIVIN ONE CHARLIE ARRIVAL (XIVIN 1C): FROM XIVIN FLY ON TRACK 011° TO HALAN AT 2450 m OR ABOVE, TURN RIGHT ON TRACK 027° TO IAF (KW) AT 1500 m.
 2. HAKAO TWO CHARLIE ARRIVAL (HAKAO 2C): FROM HAKAO FLY ON TRACK 227° TO IAF (KW) AT 2150 m OR ABOVE, CONTINUE TO DESCEND FOLLOWING ATC CLEARANCE.
 3. NAMHA ONE CHARLIE ARRIVAL (NAH 1C): FROM NAH FLY ON TRACK 328° TO HALAN AT 2450 m OR ABOVE, TURN RIGHT ON TRACK 027° TO IAF (KW) AT 1500 m OR ABOVE.
 4. MOCCHAU ONE CHARLIE ARRIVAL (MC 1C): FROM MC FLY ON TRACK 069° TO IAF (KW) AT 2150 m OR ABOVE.
 5. LAOCAI TWO CHARLIE ARRIVAL (LAOCA 2C): FROM LAOCAI FLY ON TRACK 129° TO IAF (KW) AT 2200 m OR ABOVE.
 6. NASAN THREE CHARLIE ARRIVAL (BQ 3C): FROM BQ FLY ON TRACK 092° TO HUVAN AT FL100 OR ABOVE, FLY ON TRACK 089° TO IAF (KW) AT 1500 m OR ABOVE.
 7. PHUTA TWO CHARLIE ARRIVAL (PHUTA 2C): FROM PHUTA FLY ON TRACK 297° TO IAF (KW) AT 1500 m OR ABOVE. (NOTE: ONLY USED IN CASE VVNB AND VVCI ARE ALTERNATE AERODROMES FOR EACH OTHER).