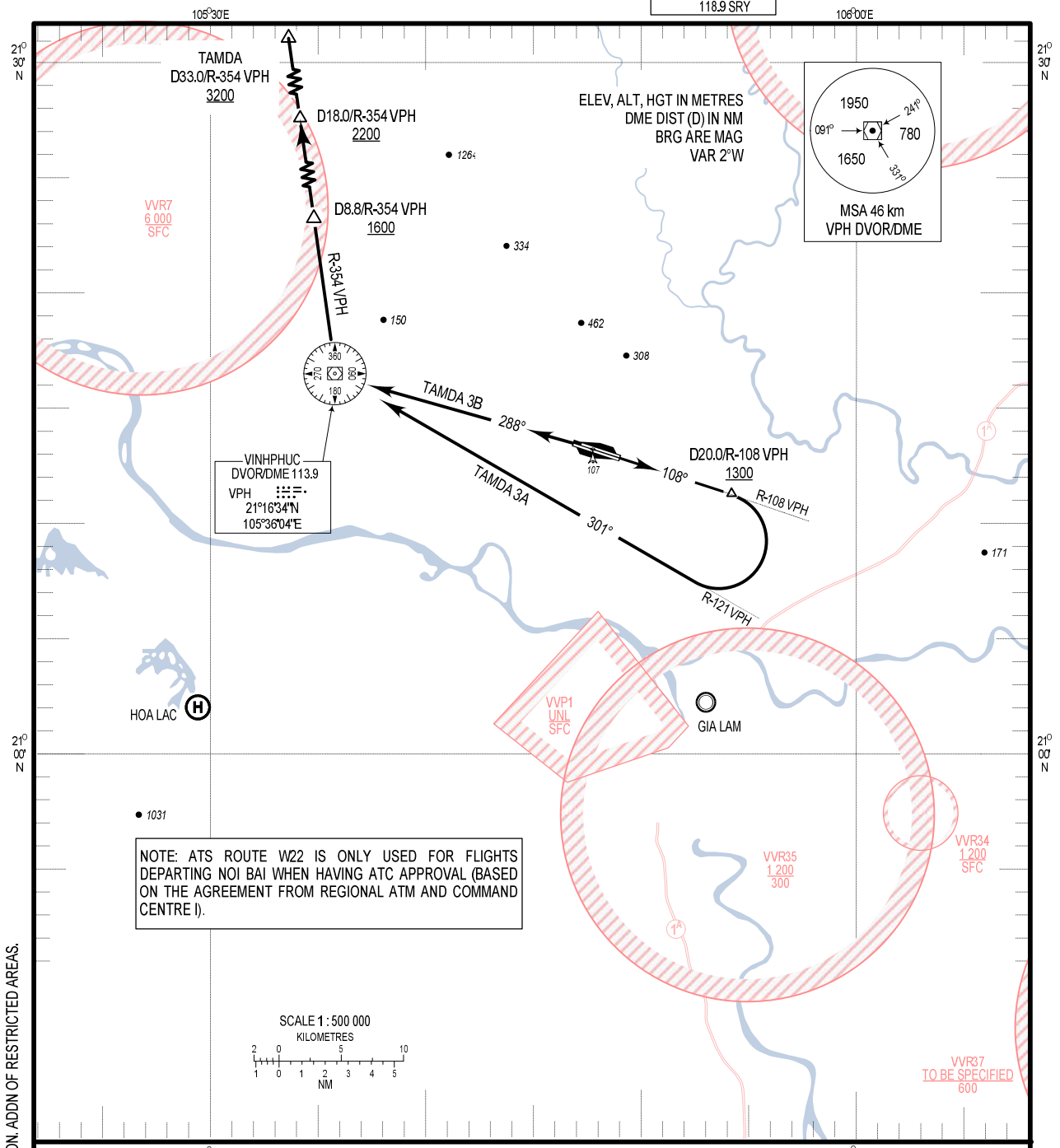


**STANDARD DEPARTURE CHART -
INSTRUMENT (SID) - ICAO**

TRANSITION ALTITUDE
2750m

TMC: 125.1 PRI
126.575 SRY
ARR: 121.0 PRI
120.075 SRY
TWR: 118.4 PRI
118.9 SRY

**HA NOI/NOI BAI INTL (VVNB)
RWY 11L/R, 29L/R
TAMDA 3A, TAMDA 3B**



NOTE: ATS ROUTE W22 IS ONLY USED FOR FLIGHTS DEPARTING NOI BAI WHEN HAVING ATC APPROVAL (BASED ON THE AGREEMENT FROM REGIONAL ATM AND COMMAND CENTRE I).

CHANGES: VAR. MAG BRG. PROCEDURE TEXTUAL DESCRIPTION. ADDN OF RESTRICTED AREAS.

RWY 11L/R

TAMDA THREE ALPHA DEPARTURE (TAMDA 3A): AFTER DEPARTURE, MAINTAIN RWY HDG TO INTERCEPT R-108 VPH TO D20.0/R-108 VPH AT 1300 m OR ABOVE, TURN RIGHT FOLLOW R-121 VPH TO VPH DVOR/DME, TURN RIGHT TO INTERCEPT R-354 VPH TO D8.8/R-354 VPH AT 1600 m OR ABOVE, CONTINUE TO D18.0/R-354 VPH AT 2200 m OR ABOVE, TO TAMDA AT 3200 m OR ABOVE.

RWY 29L/R

TAMDA THREE BRAVO DEPARTURE (TAMDA 3B): AFTER DEPARTURE, MAINTAIN RWY HDG TO INTERCEPT R-108 VPH TO VPH DVOR/DME, TURN RIGHT TO INTERCEPT R-354 VPH TO D8.8/R-354 VPH AT 1600 m OR ABOVE, CONTINUE TO D18.0/R-354 VPH AT 2200 m OR ABOVE, TO TAMDA AT 3200 m OR ABOVE.