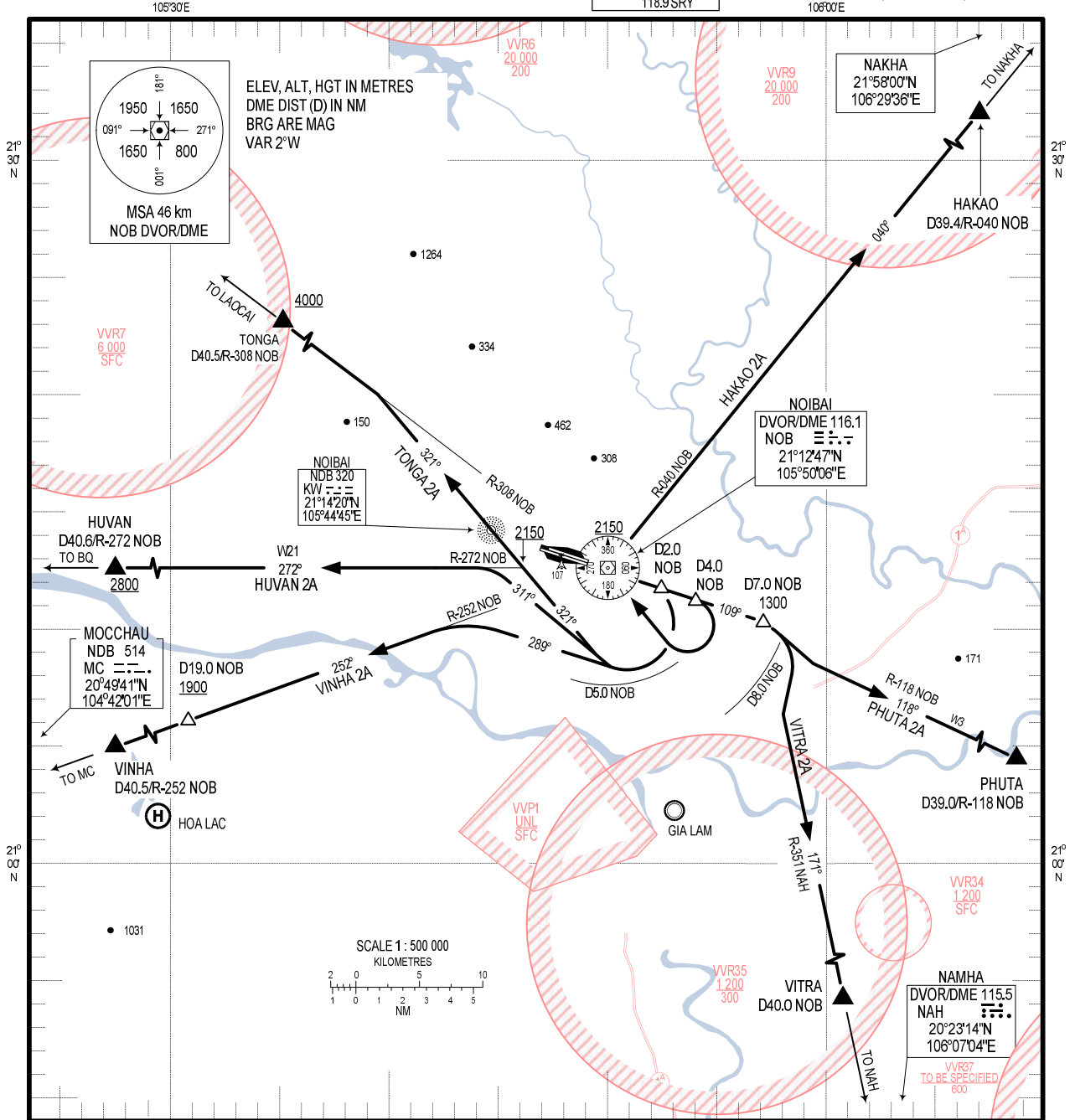


**STANDARD DEPARTURE CHART -
INSTRUMENT (SID) - ICAO**

TRANSITION ALTITUDE
2750 m

TMC: 125.1 PRI
126.575 SRY
ARR: 121.0 PRI
120.075 SRY
TWR: 118.4 PRI
118.9 SRY

**HA NOI/NOI BAI INTL (VVNB)
RWY 11L/R
HAKAO 2A, VITRA 2A, VINHA 2A,
TONGA 2A, HUVAN 2A, PHUTA 2A**



CHANGES: VAR, MAG BRG, POSITION INFO OF SIGNIFICANT POINTS, PROCEDURE TEXTUAL DESCRIPTION, ADDN OF RESTRICTED AREAS.

- RWY 11L/R**
- HAKAO TWO ALPHA DEPARTURE (HAKAO 2A):** AFTER DEPARTURE, MAINTAIN RWY HDG TO D4.0 NOB, TURN RIGHT WITHIN D8.0 NOB TO NOB DVOR/DME AT 2150 m OR ABOVE, TURN RIGHT TO INTERCEPT R474 ON R-040 NOB TO HAKAO, CONTINUE TO NAKHA.
 - VITRA TWO ALPHA DEPARTURE (VITRA 2A):** AFTER DEPARTURE, MAINTAIN RWY HDG TO D7.0 NOB AT 1300 m OR ABOVE, TURN RIGHT TO INTERCEPT R-351 NAH TO VITRA, CONTINUE TO NAH DVOR/DME.
 - VINHA TWO ALPHA DEPARTURE (VINHA 2A):** AFTER DEPARTURE, MAINTAIN RWY HDG TO D2.0 NOB, TURN RIGHT ON TRACK 289° WITHIN D5.0 NOB TO INTERCEPT R-252 NOB TO VINHA, CONTINUE TO MC NDB. (NOTE: REACHING D19.0/R-252 NOB AT 1900 m OR ABOVE).
 - TONGA TWO ALPHA DEPARTURE (TONGA 2A):** AFTER DEPARTURE, MAINTAIN RWY HDG TO D2.0 NOB, TURN RIGHT ON TRACK 321° WITHIN D5.0 NOB, CROSSING R-272 NOB AT 2150 m OR ABOVE, CONTINUE TRACK 321° TO INTERCEPT W6 ON R-308 NOB TO TONGA AT 4000 m OR ABOVE, CONTINUE TO LAOCAI (MNM PDG 6%).
 - HUVAN TWO ALPHA DEPARTURE (HUVAN 2A):** AFTER DEPARTURE, MAINTAIN RWY HDG TO D2.0 NOB, TURN RIGHT ON TRACK 311° WITHIN D5.0 NOB TO INTERCEPT R-272 NOB (W21) TO HUVAN AT 2800m OR ABOVE, CONTINUE TO BQ NDB.
 - PHUTA TWO ALPHA DEPARTURE (PHUTA 2A):** AFTER DEPARTURE, MAINTAIN RWY HDG TO D7.0 NOB AT 1300 m OR ABOVE, TURN RIGHT TO INTERCEPT R-118 NOB (W3) TO PHUTA, CONTINUE TO CAT BI (NOTE: ONLY USED IN CASE VVNB AND VVCI ARE ALTERNATE AERODROMES FOR EACH OTHER).