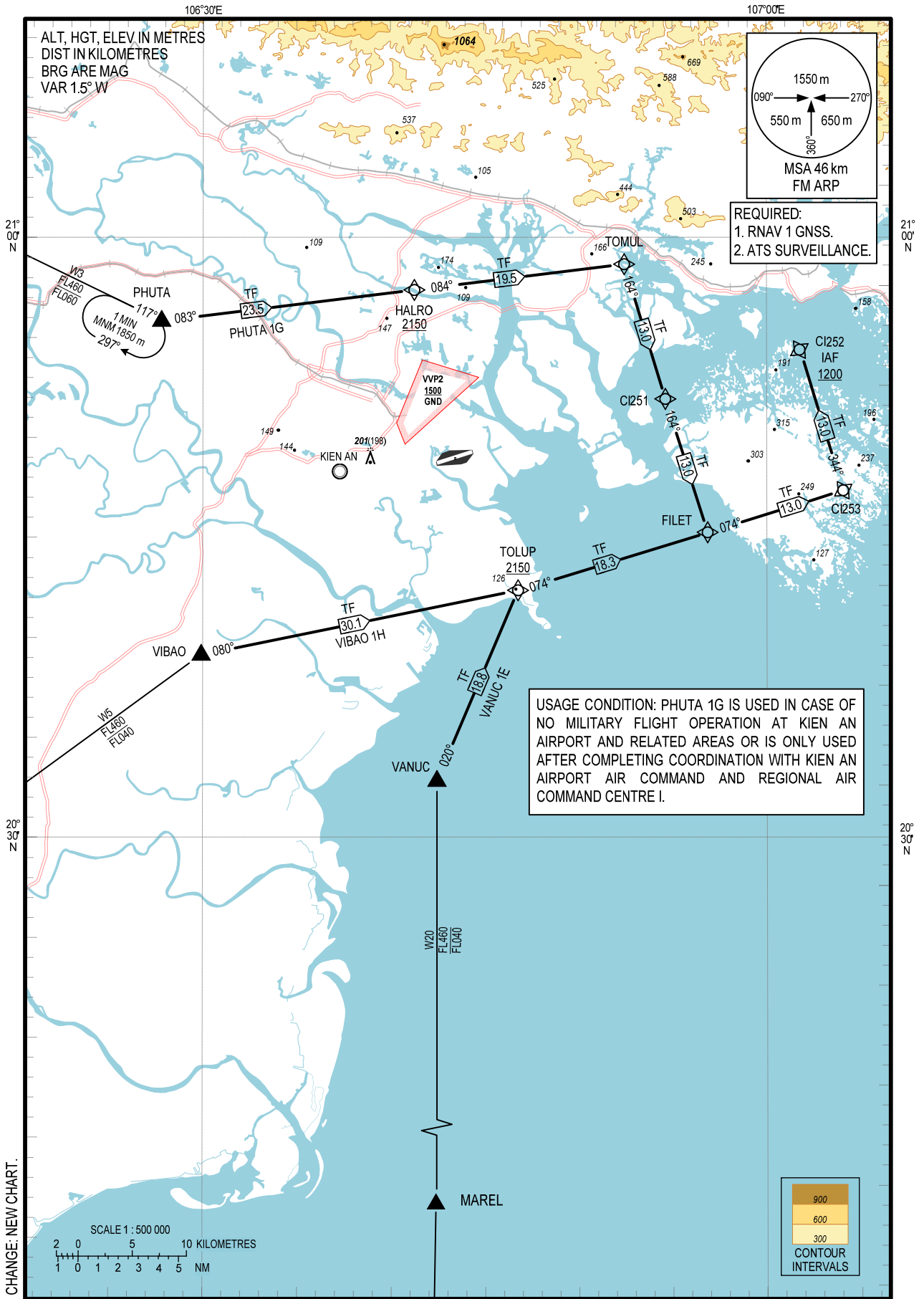


STANDARD ARRIVAL CHART-  
INSTRUMENT (STAR) - ICAO

TRANSITION ALTITUDE  
2750 m

TWR 118.5

HAI PHONG/CAT BI INTL (VCCI)  
RNAV RWY 25  
PHUTA 1G, VANUC 1E, VIBAO 1H



CHANGE: NEW CHART.