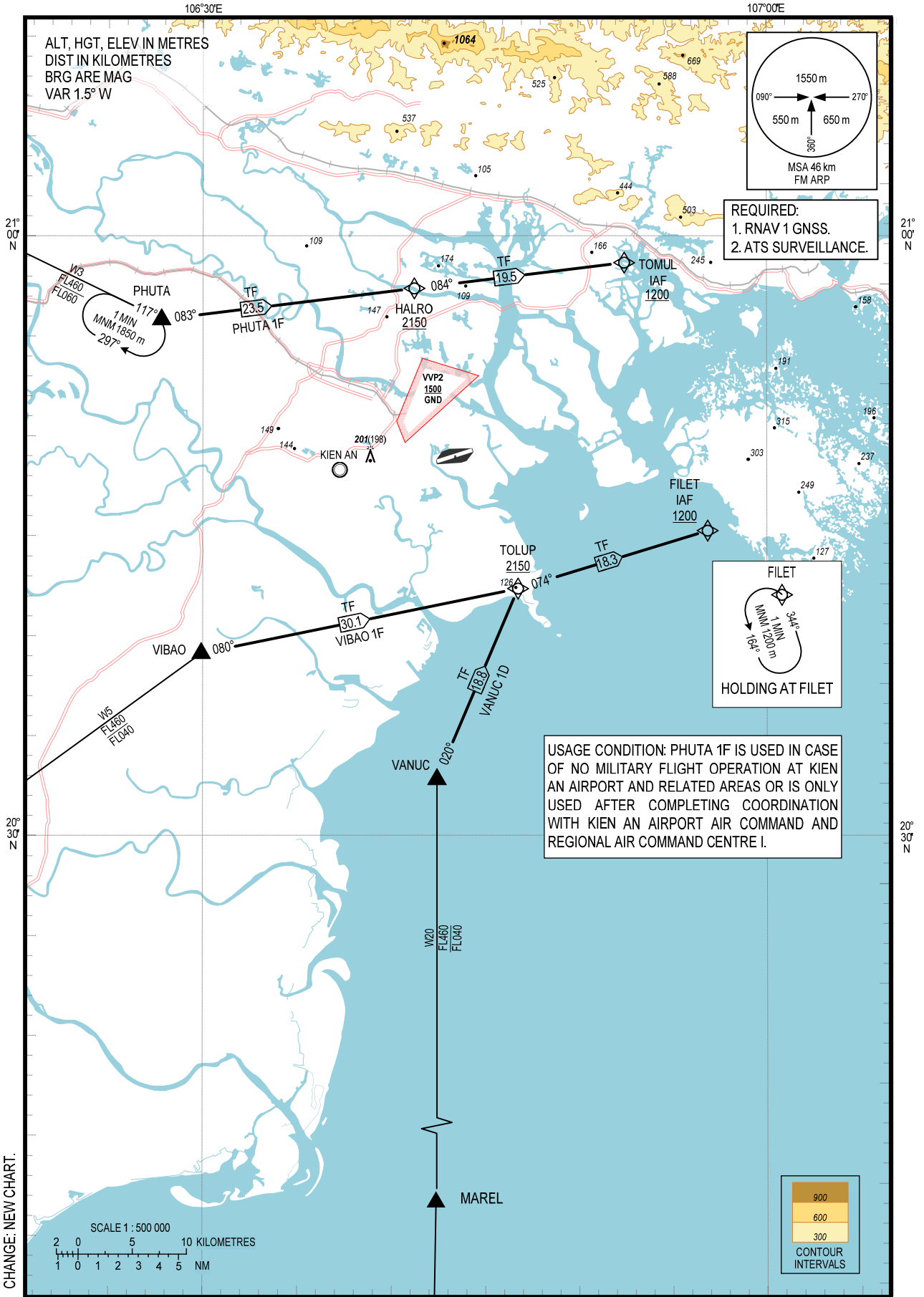


STANDARD ARRIVAL CHART –
INSTRUMENT (STAR) – ICAO

TRANSITION ALTITUDE
2750 m

TWR 118.5

HAI PHONG/CAT BI INTL (VCCI)
RNAV RWY 25
PHUTA 1F, VANUC 1D, VIBAO 1F



CHANGE: NEW CHART.