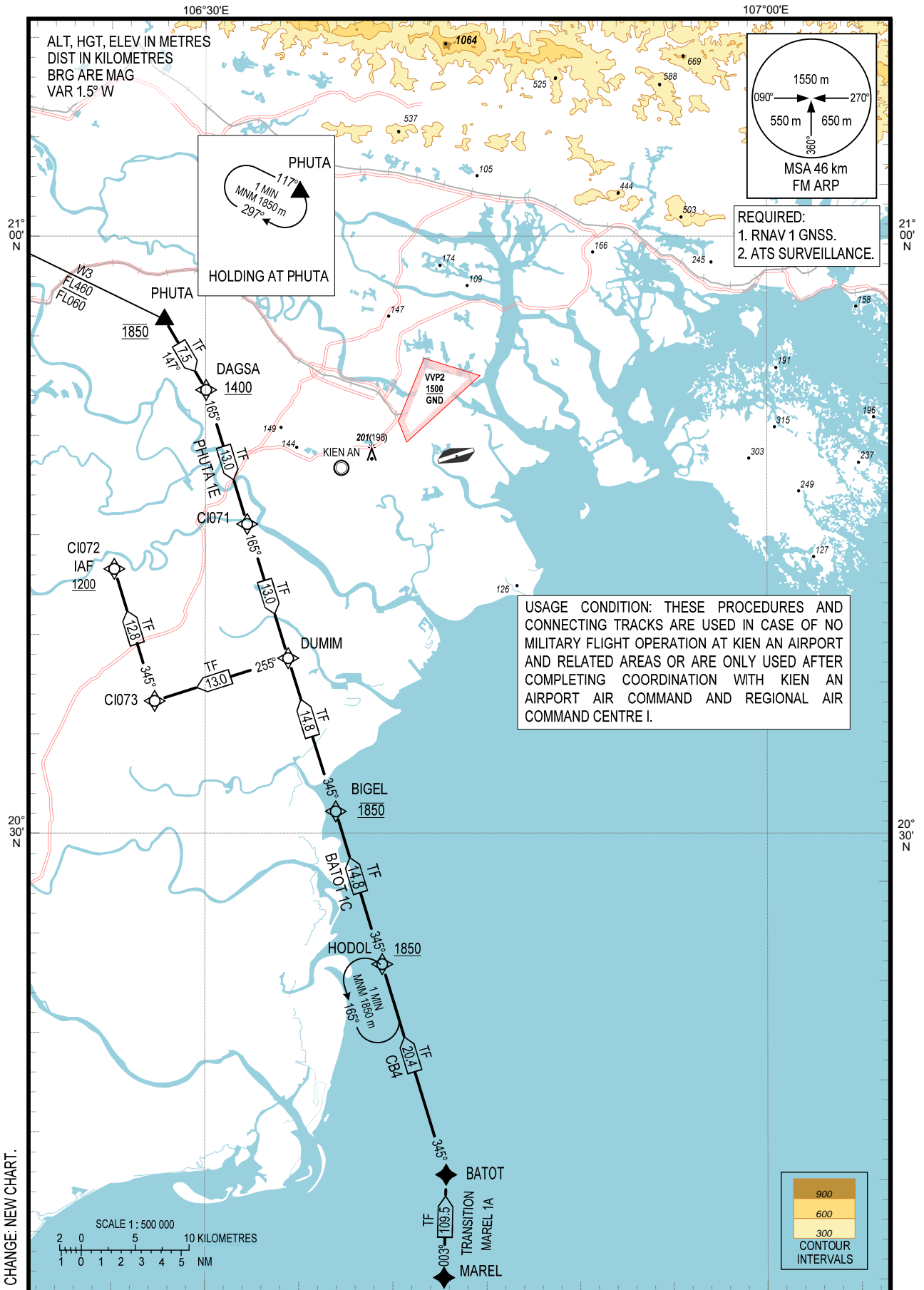


**STANDARD ARRIVAL CHART-
INSTRUMENT (STAR) - ICAO**

TRANSITION ALTITUDE
2750 m

TWR 118.5

**HAI PHONG/CAT BI INTL (VCCI)
RNAV RWY 07
BATOT 1C, PHUTA 1E**



CHANGE: NEW CHART.