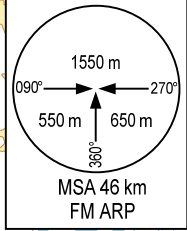
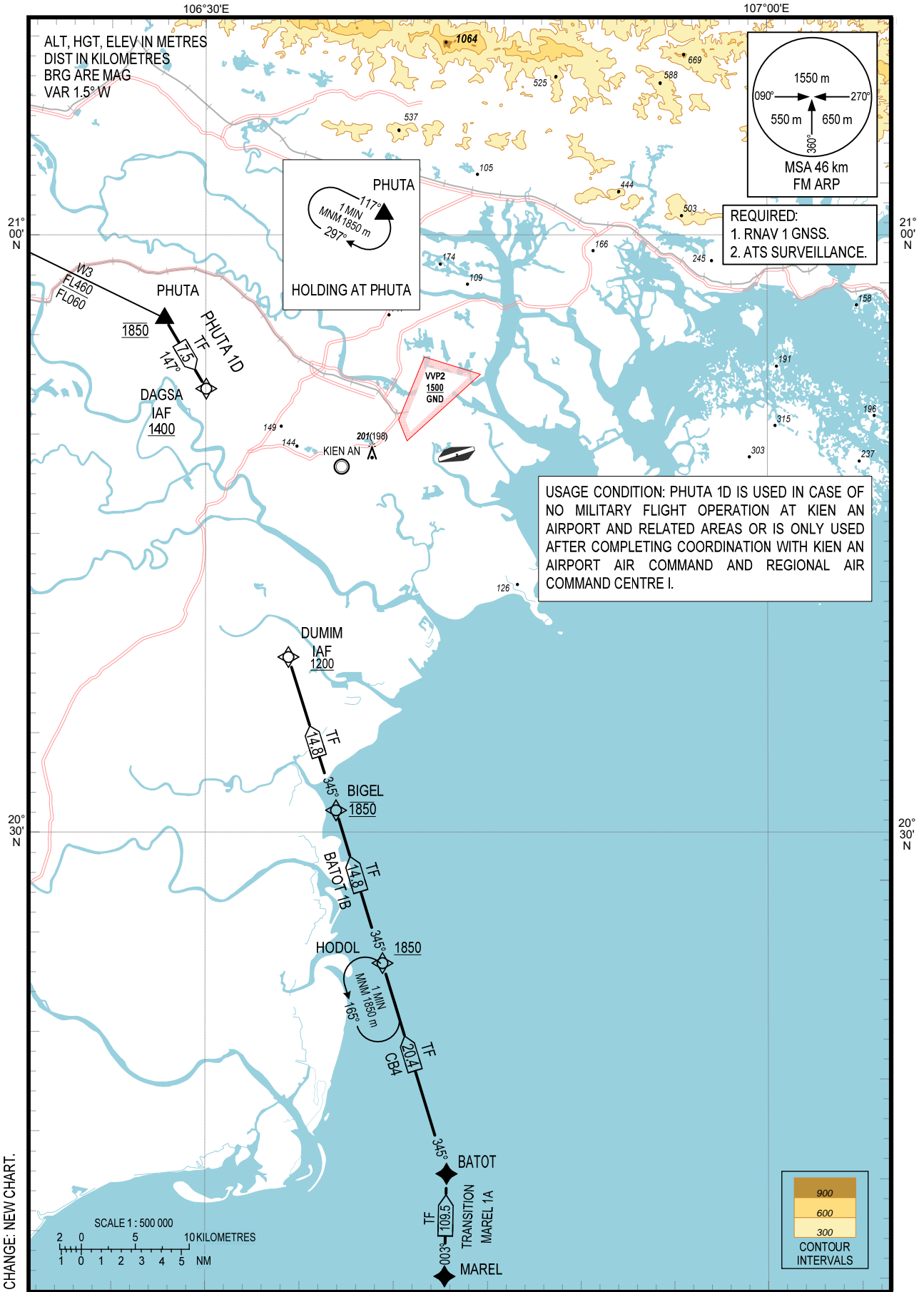


**STANDARD ARRIVAL CHART-
INSTRUMENT (STAR) - ICAO**

TRANSITION ALTITUDE
2750 m

TWR 118.5

**HAI PHONG/CAT BI INTL (VCI)
RNAV RWY 07
BATOT 1B, PHUTA 1D**



REQUIRED:
1. RNAV 1 GNSS.
2. ATS SURVEILLANCE.

USAGE CONDITION: PHUTA 1D IS USED IN CASE OF NO MILITARY FLIGHT OPERATION AT KIEN AN AIRPORT AND RELATED AREAS OR IS ONLY USED AFTER COMPLETING COORDINATION WITH KIEN AN AIRPORT AIR COMMAND AND REGIONAL AIR COMMAND CENTRE I.

CHANGE: NEW CHART.