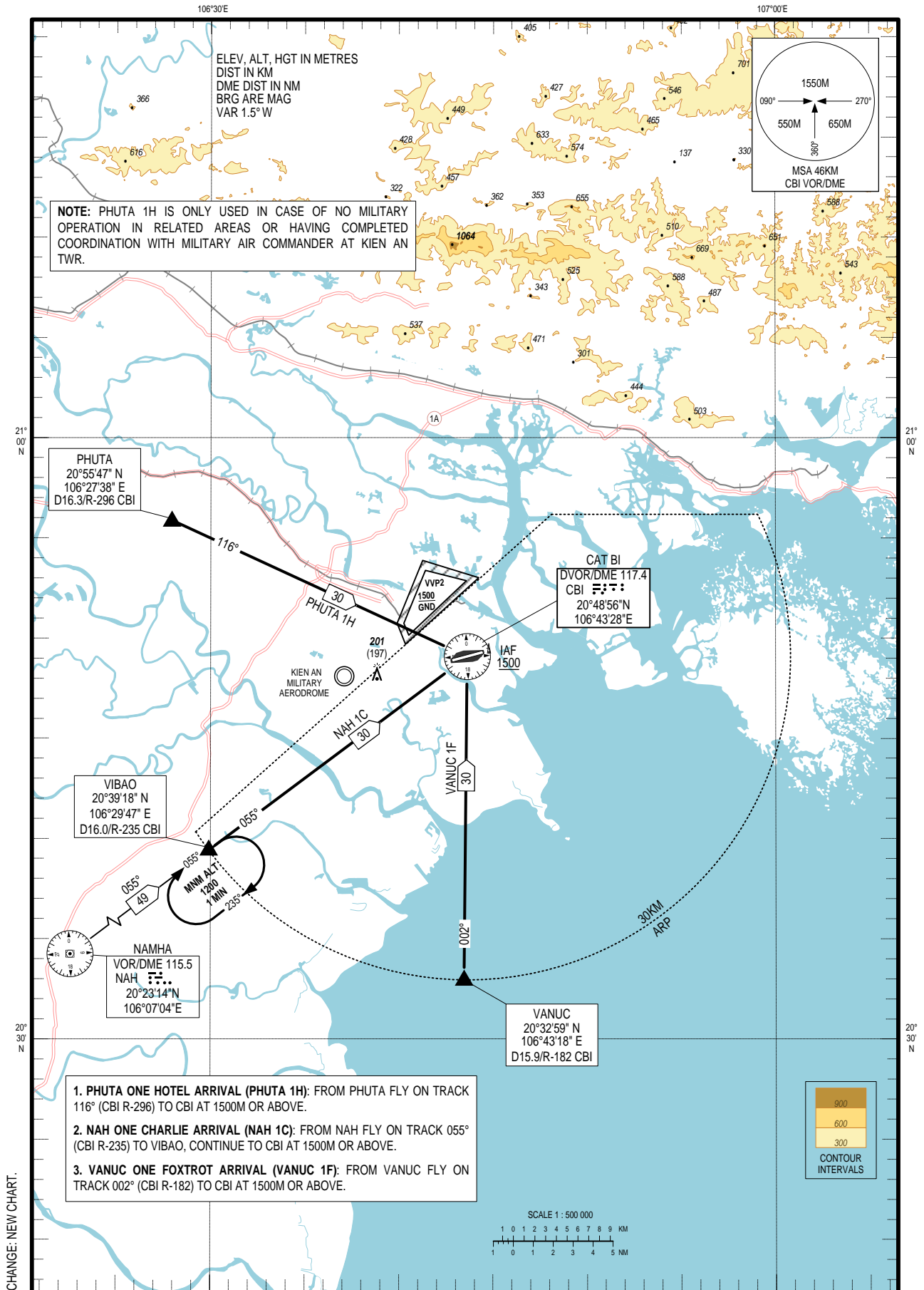


STANDARD ARRIVAL CHART –
INSTRUMENT (STAR) – ICAO

TRANSITIONAL ALTITUDE
2750 M

TWR 118.5

HAI PHONG/CAT BI INTL (VVCI)
RWY 07/25
PHUTA 1H, VANUC 1F, NAH 1C



1. PHUTA ONE HOTEL ARRIVAL (PHUTA 1H): FROM PHUTA FLY ON TRACK 116° (CBI R-296) TO CBI AT 1500M OR ABOVE.
2. NAH ONE CHARLIE ARRIVAL (NAH 1C): FROM NAH FLY ON TRACK 055° (CBI R-235) TO VIBAO, CONTINUE TO CBI AT 1500M OR ABOVE.
3. VANUC ONE FOXTROT ARRIVAL (VANUC 1F): FROM VANUC FLY ON TRACK 002° (CBI R-182) TO CBI AT 1500M OR ABOVE.