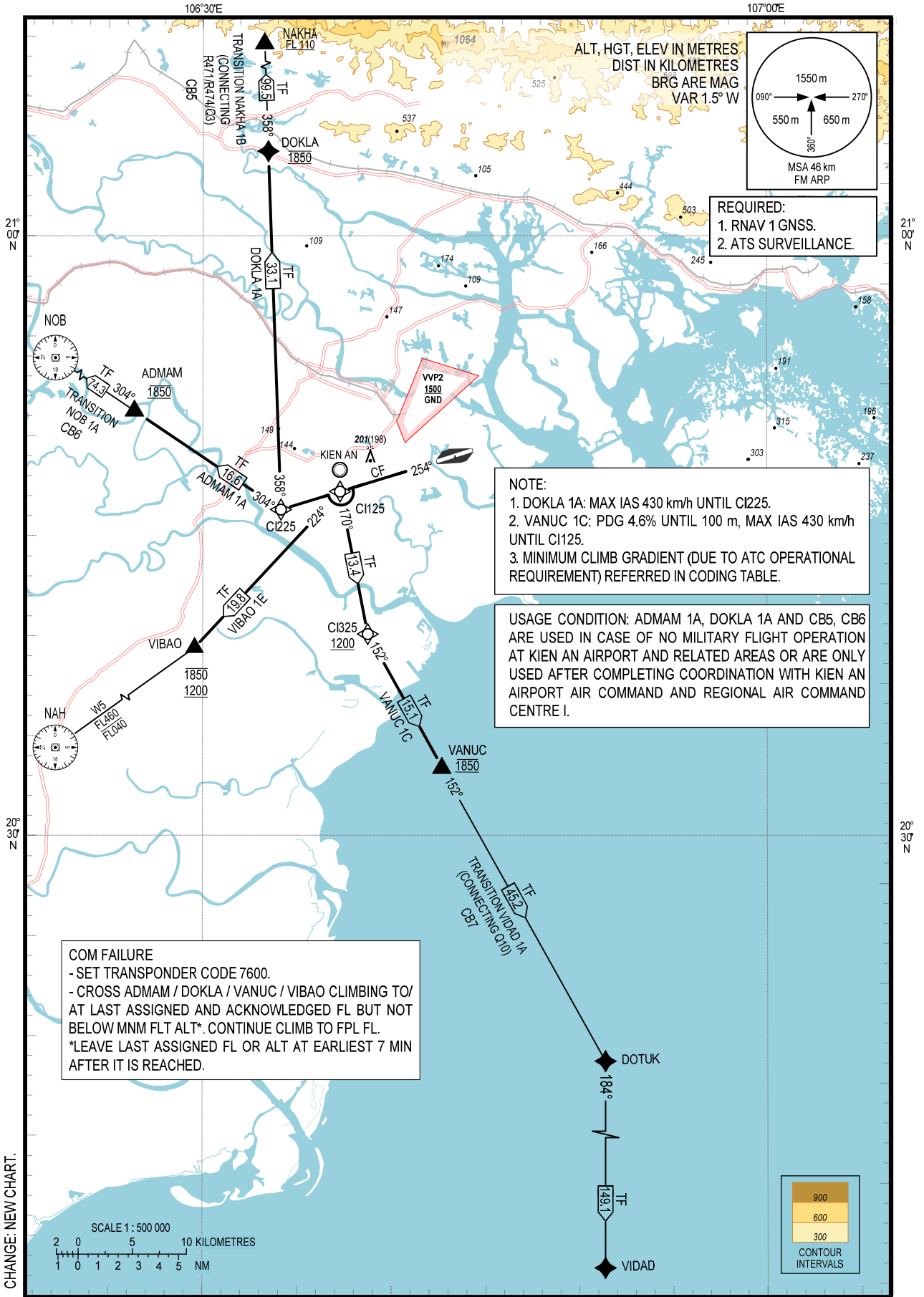


**STANDARD DEPARTURE CHART –  
INSTRUMENT (SID) – ICAO**

TRANSITION ALTITUDE  
2750 m

TWR 118.5

**HAI PHONG/CAT BI INTL (VVCI)  
RNAV RWY 25**  
ADMAM 1A, DOKLA 1A, VANUC 1C, VIBAO 1E



CHANGE: NEW CHART.