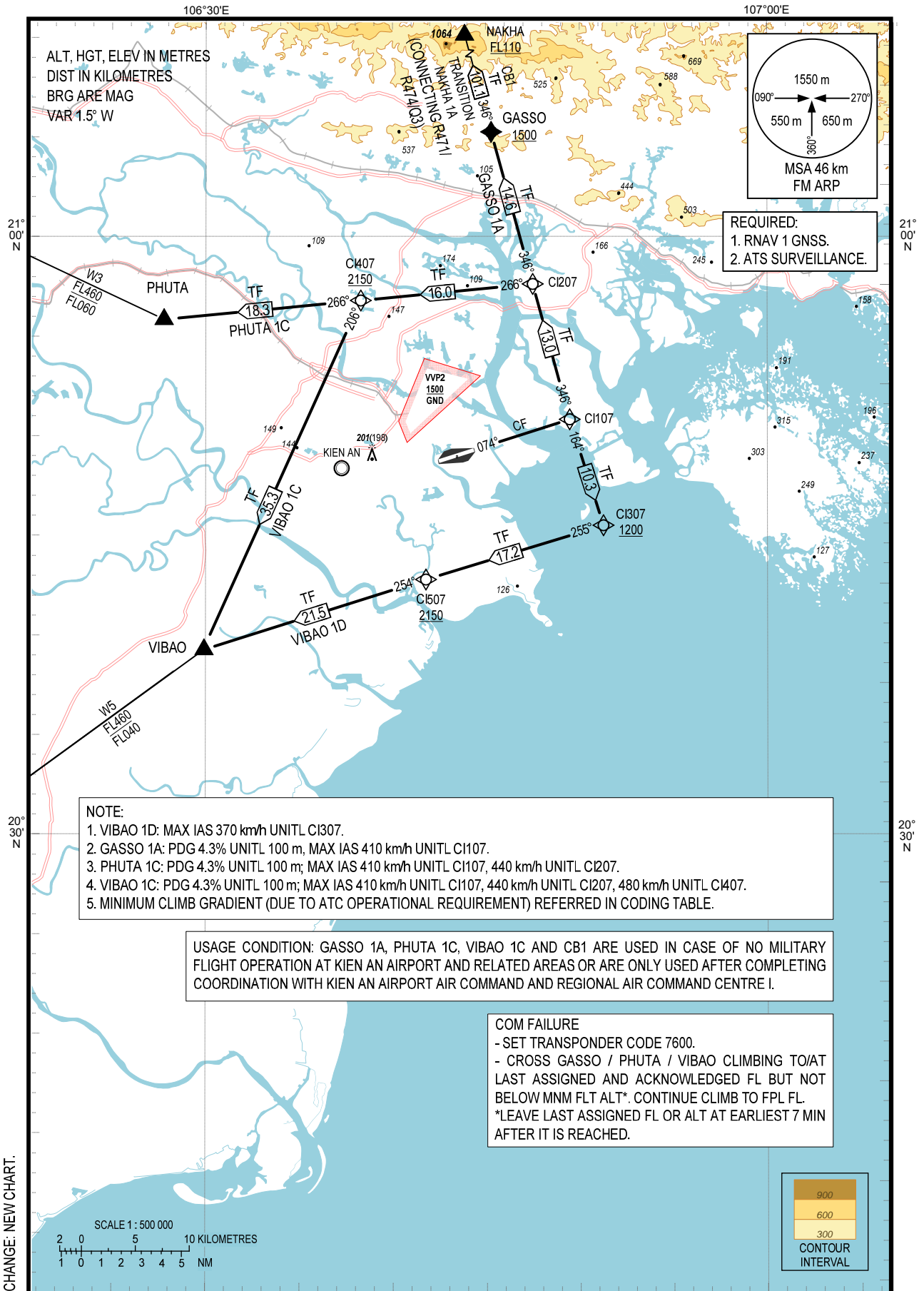


**STANDARD DEPARTURE CHART-
INSTRUMENT (SID) - ICAO**

TRANSITION ALTITUDE
2750 m

TWR 118.5

**HAI PHONG/CAT BI INTL (VVCI)
RNAV RWY 07**
GASSO 1A, PHUTA 1C, VIBAO 1C, VIBAO 1D



CHANGE: NEW CHART.