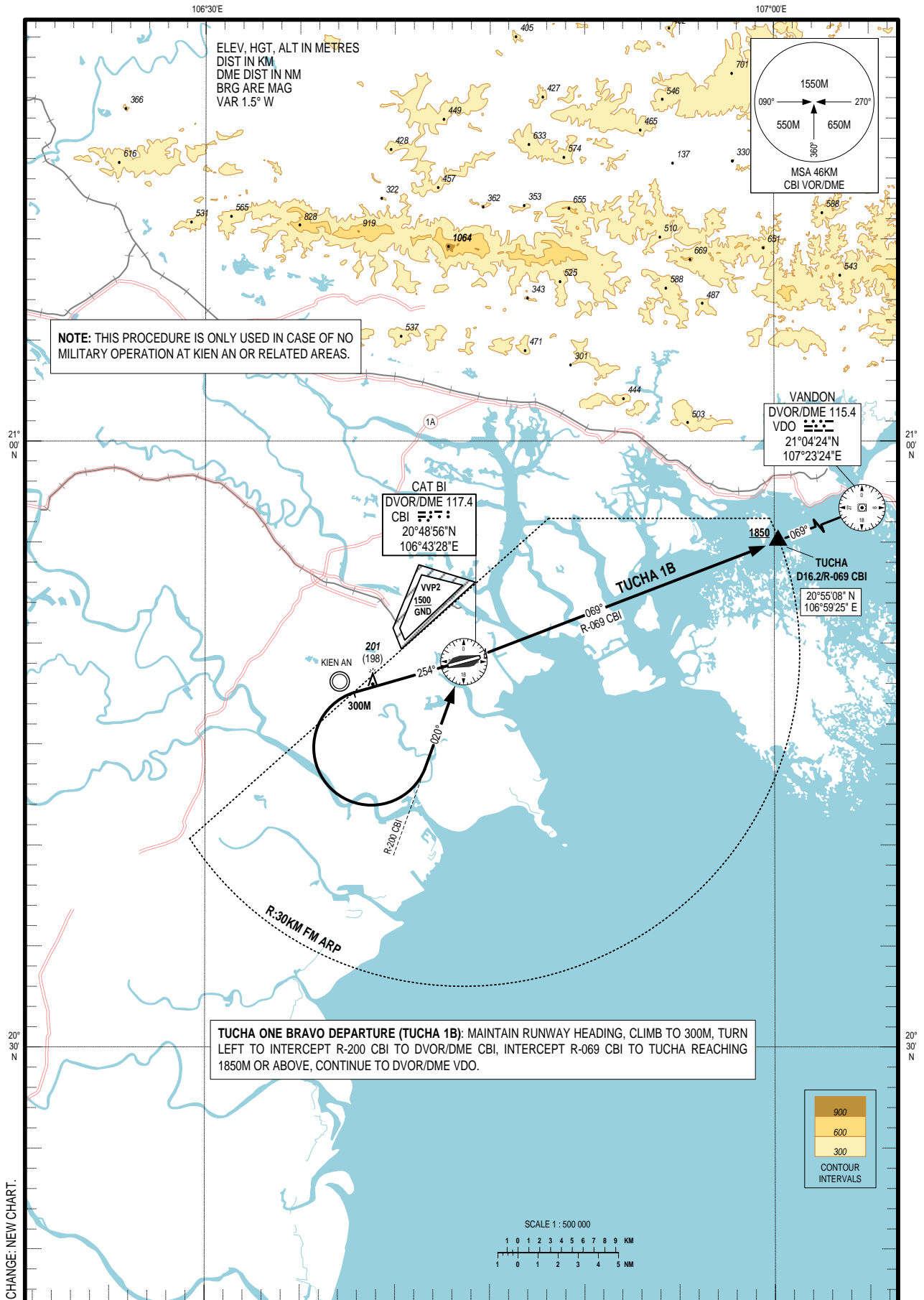


STANDARD DEPARTURE CHART -  
INSTRUMENT (SID) - ICAO

TRANSITION ALTITUDE  
2750 M

TWR 118.5

HAI PHONG/CAT BI INTL (VVCI)  
RWY 25  
TUCHA 1B



NOTE: THIS PROCEDURE IS ONLY USED IN CASE OF NO MILITARY OPERATION AT KIEN AN OR RELATED AREAS.

**TUCHA ONE BRAVO DEPARTURE (TUCHA 1B):** MAINTAIN RUNWAY HEADING, CLIMB TO 300M, TURN LEFT TO INTERCEPT R-200 CBI TO DVOR/DME CBI, INTERCEPT R-069 CBI TO TUCHA REACHING 1850M OR ABOVE, CONTINUE TO DVOR/DME VDO.

CHANGE: NEW CHART.