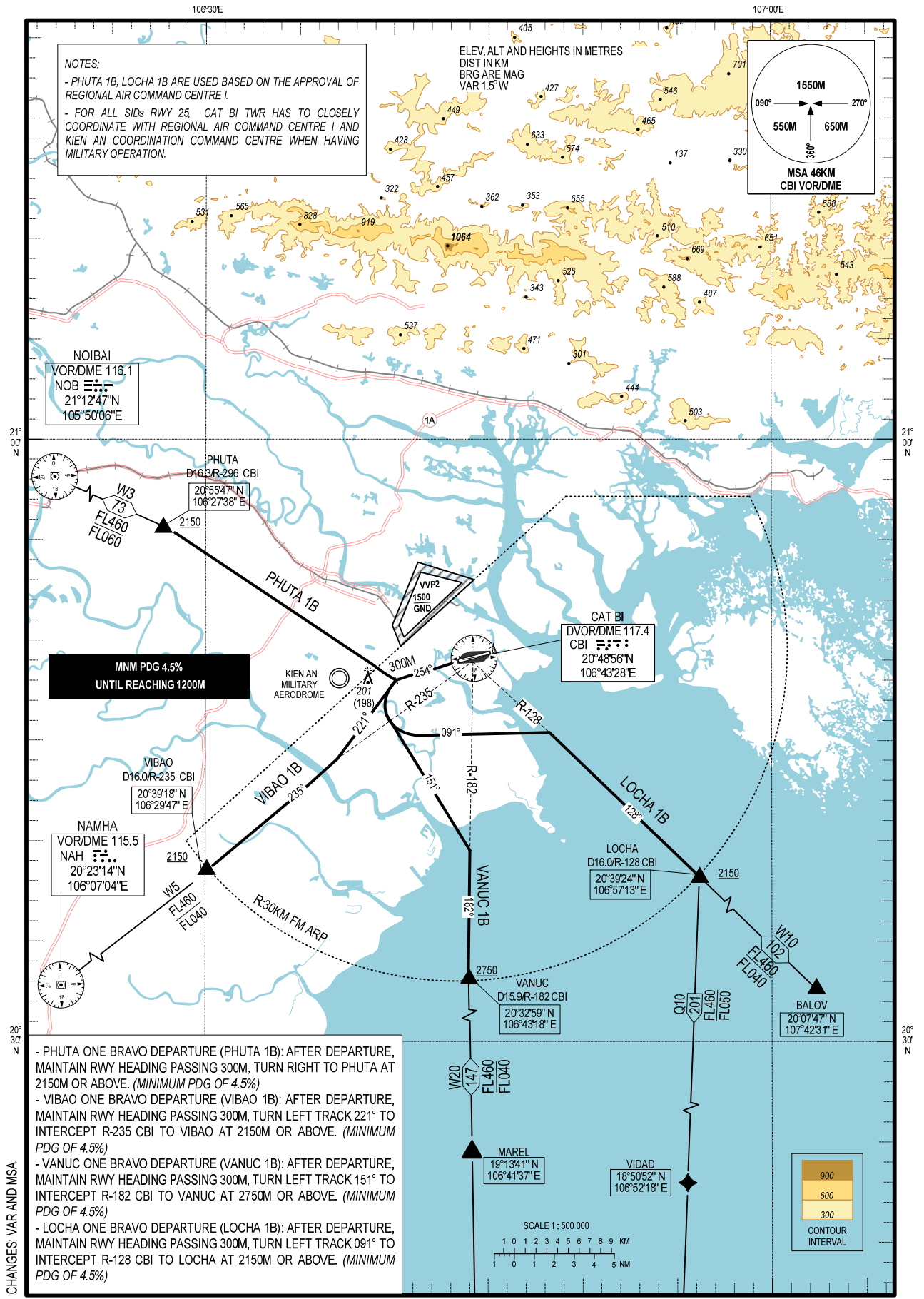


STANDARD DEPARTURE CHART –
INSTRUMENT (SID) – ICAO

TRANSITION ALTITUDE
2750 M

TWR 118.5

HAI PHONG/CAT BI INTL (VVIC)
RWY 25
VIBAO 1B, VANUC 1B, PHUTA 1B, LOCHA 1B.



CHANGES: VAR AND MSA.