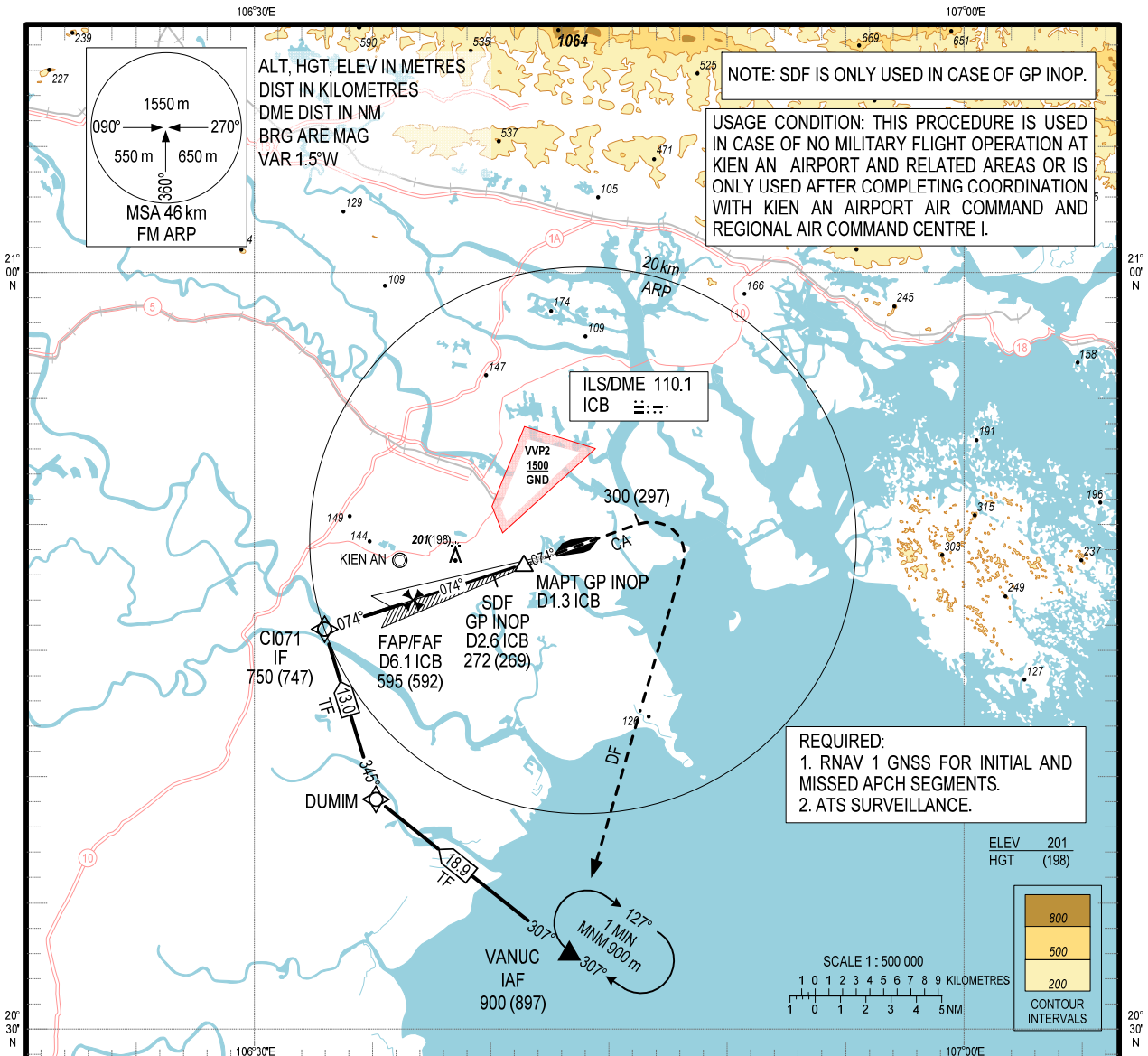


**INSTRUMENT
APPROACH
CHART - ICAO**

AERODROME ELEV 3 m
HEIGHTS RELATED TO
THR RWY 07 - ELEV 2.5 m

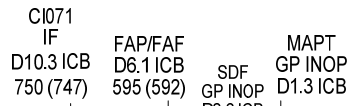
TWR 118.5

**HAI PHONG/CAT BI INTL (VVCI)
ILS W RWY 07**



TRANSITION ALTITUDE 2750

MISSED APPROACH:
CLIMB ON COURSE 074° TO 300 m, TURN RIGHT TO
VANUC AT 900 m, JOIN HOLDING PATTERN OR FOLLOW
CAT BI TWR INSTRUCTIONS.



ILS RDH 16 m
THR ELEV 2.5 m

KILOMETRES TO/ FM THR RWY 07

OCA (H)		A	B	C	D
STRAIGHT-IN APCH	CAT I		73 (70)		
	GP INOP		140 (137)		
CIRCLING		250 (247)		350 (347)	

CIRCLING ONLY IN THE SOUTH OF RUNWAY

GS	km/h	100	150	200	250	300	350
FAF - MAPT 8.9 km	min:s	5:20	3:33	2:40	2:08	1:47	1:31
RATE OF DESCENT	m/s	1.46	2.18	2.91	3.64	4.37	5.09

CHANGE: NEW CHART.