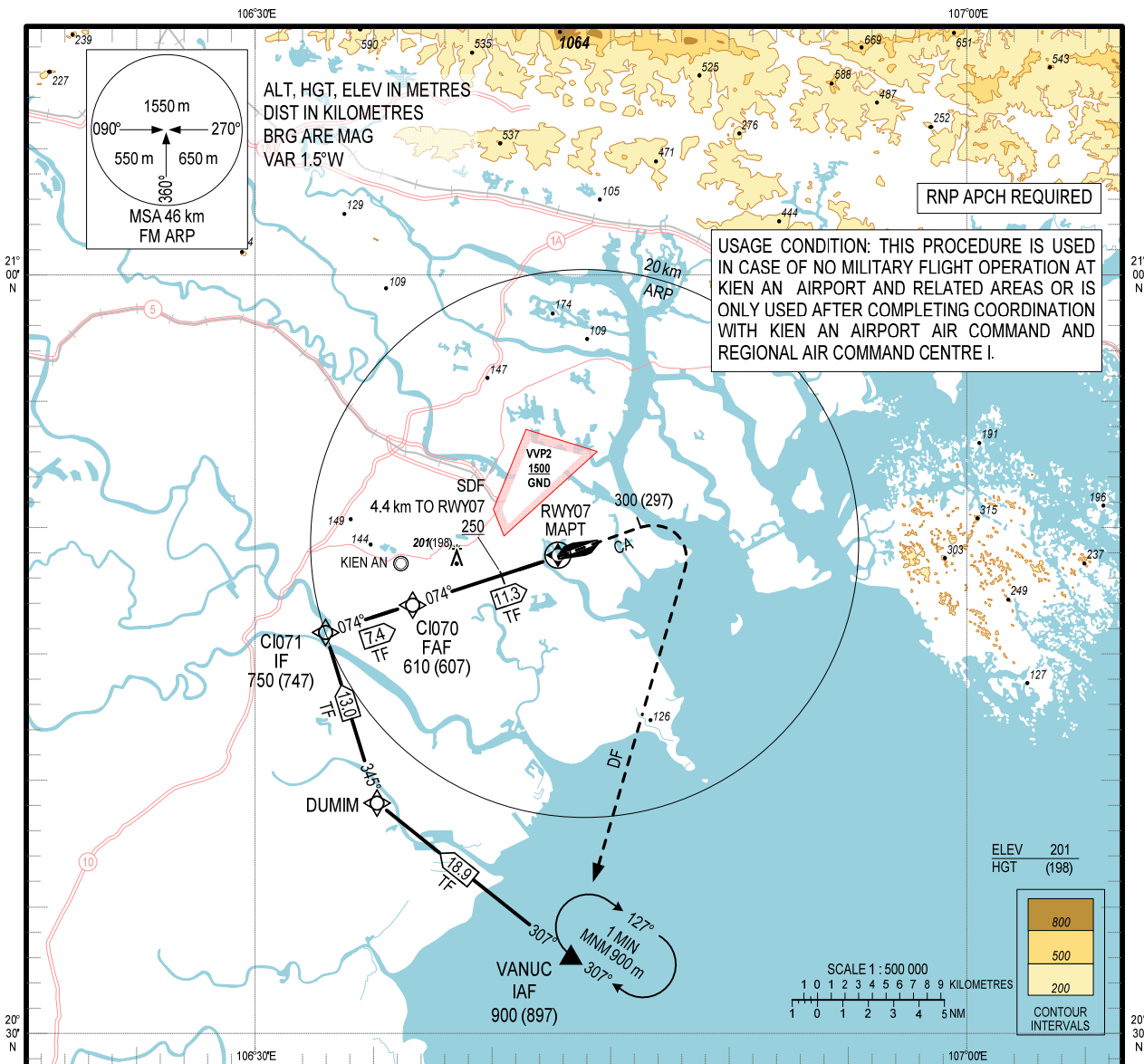


**INSTRUMENT  
APPROACH  
CHART - ICAO**

AERODROME ELEV 3 m  
HEIGHTS RELATED TO  
AERODROME ELEV

TWR 118.5

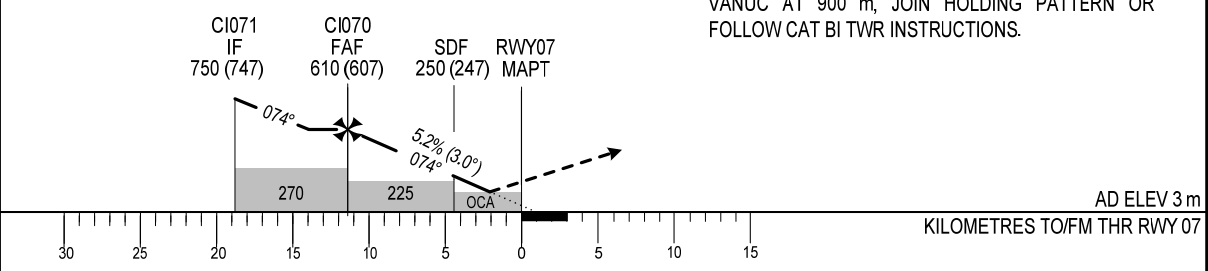
**HAI PHONG/CAT BI INTL (VVC)**  
RNP Y RWY 07



KILOMETRES TO NEXT WPT	RWY07	2.1	4.4	6	8	10	11.3
ALT		125	250	330	435	540	610

TRANSITION ALTITUDE 2750

MISSED APPROACH:  
CLIMB ON COURSE 074° TO 300 m, TURN RIGHT TO VANUC AT 900 m, JOIN HOLDING PATTERN OR FOLLOW CAT BI TWR INSTRUCTIONS.



OCA (H)	A	B	C	D
LNAV	125 (122)			
CIRCLING	250 (247)		350 (347)	

GS	km/h	130	170	210	250	290
RATE OF DESCENT	m/s	1.9	2.5	3.0	3.6	4.2
FAF - MAPT 5.2%						

CIRCLING ONLY IN THE SOUTH OF RUNWAY

CHANGE: NEW CHART.