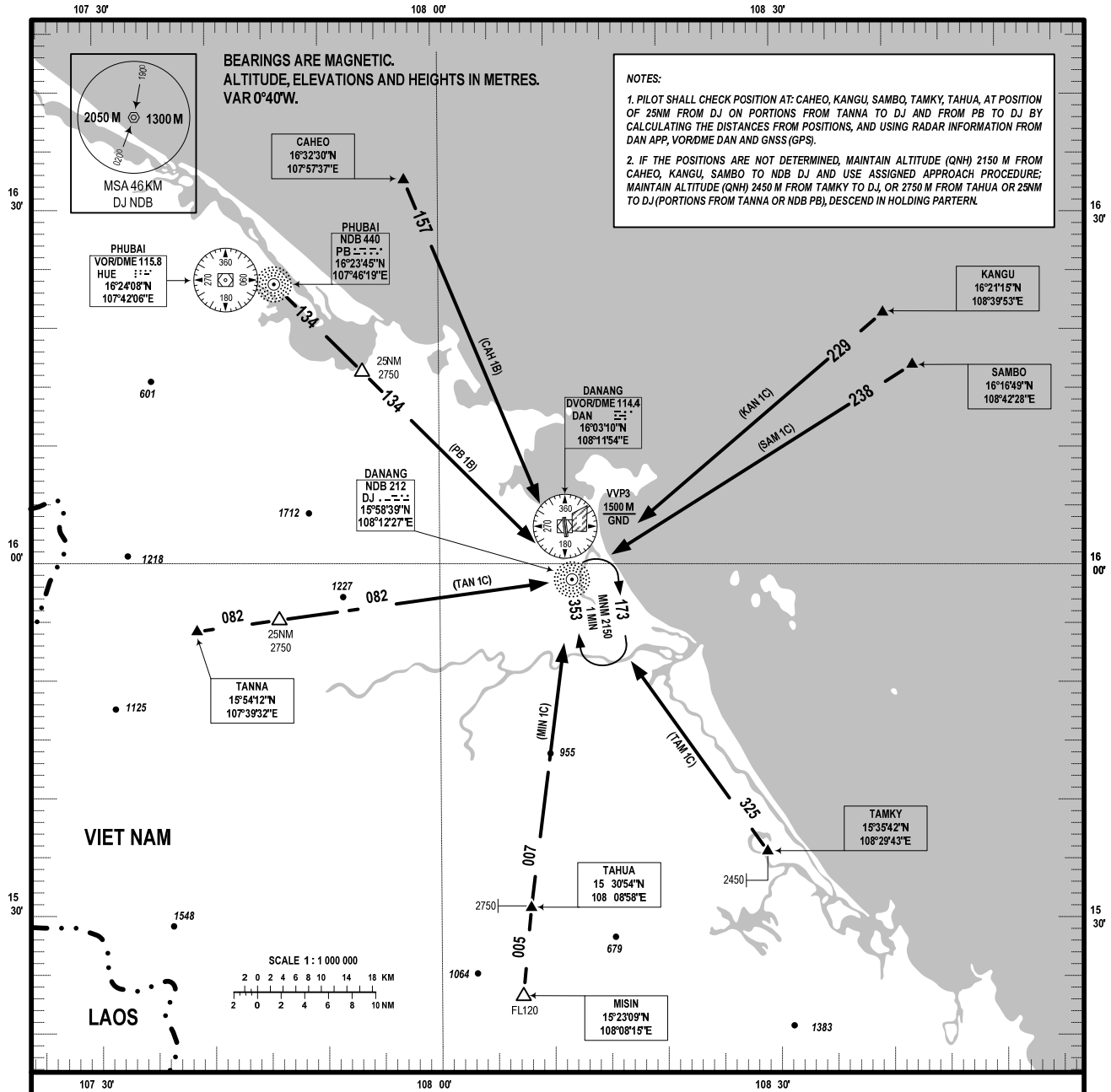


**STANDARD ARRIVAL CHART -
INSTRUMENT (STAR) - ICAO**

**TRANSITION ALTITUDE 2750 M
TRANSITION LEVEL FL 100**

**APP: 120.45 PRI
APP: 125.45 SRY
TWR: 118.35 PRI
TWR: 118.05 SRY**

**DA NANG/DA NANG INTL(VVDN)
RWY 35L
MIN 1C, TAM 1C, TAN 1C
KAN 1C, SAM 1C, PB 1B, CAH 1B**



RWY 35L

- **MISIN ONE CHARLIE ARRIVAL (MIN 1C):** AFTER MISIN FL120, PROCEED ON TRACK 005° TO TAHUA, DESCEND TO 2750 M, AFTER TAHUA PROCEED ON TRACK 007° TO DJ, DESCEND TO 2150 M AT DJ AND USE APPROACH PROCEDURE NDB RWY 35L.
- **TAMKY ONE CHARLIE ARRIVAL (TAM 1C):** AFTER TAMKY 2450 M PROCEED ON TRACK 325° TO DJ, DESCEND TO 2150 M AT DJ AND USE APPROACH PROCEDURE NDB RWY 35L.
- **TANNA ONE CHARLIE ARRIVAL (TAN 1C):** AFTER TANNA PROCEED ON TRACK 082° TO DJ, DESCEND TO 2750 M AT POINT 25NM TO DJ, MAINTAIN TRACK 082° DESCENDING TO 2150 M AT DAN AND USE APPROACH PROCEDURE NDB RWY 35L.
- **KANGU ONE CHARLIE ARRIVAL (KAN 1C):** AFTER KANGU PROCEED ON TRACK 229° TO DJ, DESCEND TO 2150 M AT DJ AND USE APPROACH PROCEDURE NDB RWY 35L.
- **SAMBO ONE CHARLIE ARRIVAL (SAM 1C):** AFTER SAMBO PROCEED ON TRACK 238° TO DJ, DESCEND TO 2150 M AT DJ AND USE APPROACH PROCEDURE NDB RWY 35L.
- **PHUBAI ONE BRAVO ARRIVAL (PB 1B):** AFTER NDB PB 2750 M PROCEED ON TRACK 134° TO POINT 25NM TO DJ, MAINTAIN TRACK 134° TO DJ AT 2750 M, DESCEND TO 2150 M AT DJ AND USE APPROACH PROCEDURE NDB RWY 35L.
- **CAHEO ONE BRAVO ARRIVAL (CAH 1B):** AFTER CAHEO PROCEED ON TRACK 157° DESCEND TO 2150 M AT DJ AND USE APPROACH PROCEDURE NDB RWY 35L.

CHANGE: VHF FREQ.