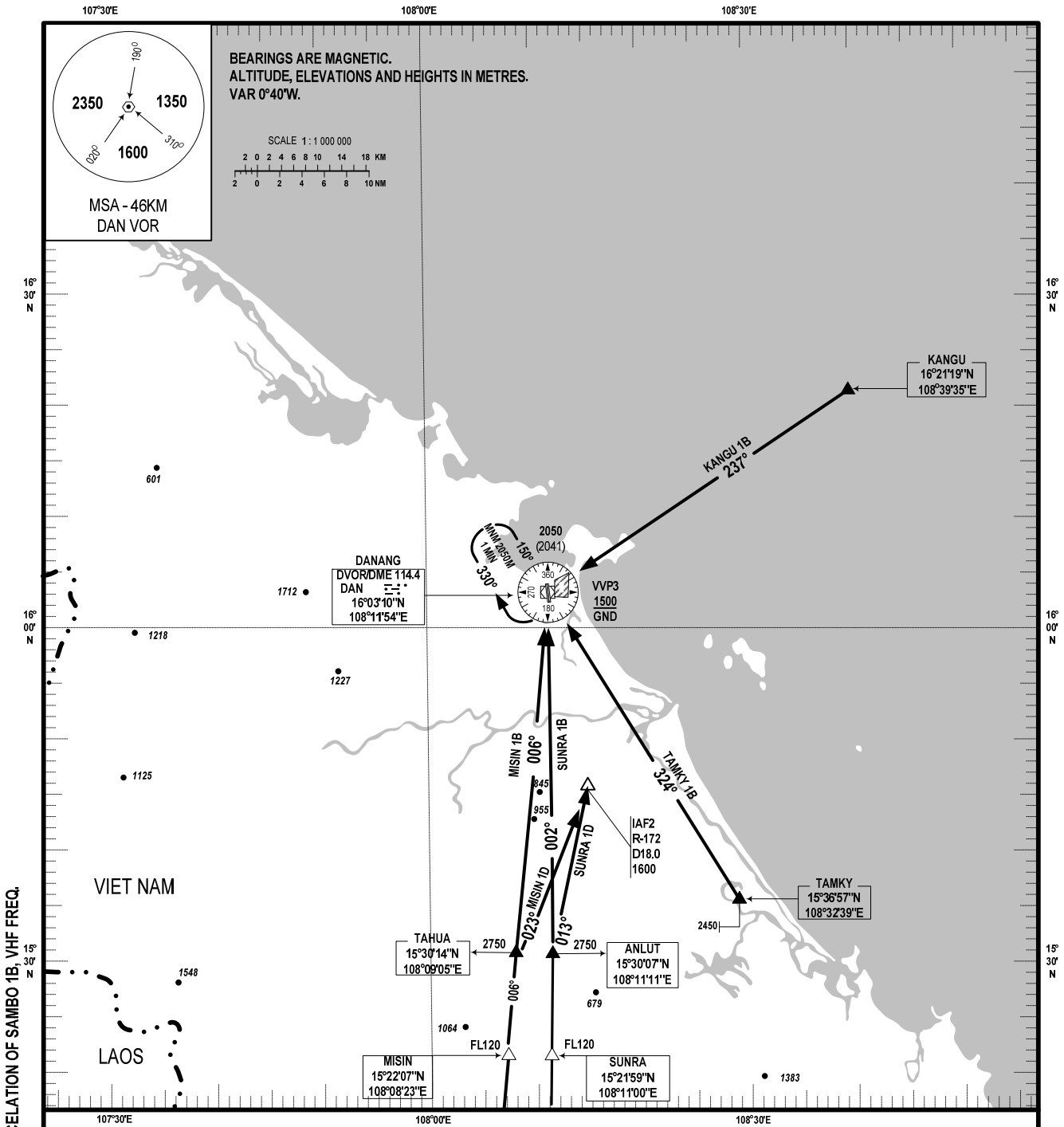


**STANDARD ARRIVAL CHART -
INSTRUMENT (STAR) - ICAO**

**TRANSITION LEVEL: FL100
TRANSITION ALT: 2750M**

**APP: 120.45 PRI
APP: 125.45 SRY
TWR: 118.35 PRI
TWR: 118.05 SRY**

**DA NANG/DA NANG INTL(VVDN)
RWY 35L/R
MISIN 1B, MISIN 1D, TAMKY 1B,
KANGU 1B, SUNRA 1B, SUNRA 1D.**



CHANGES: ADDITION OF SUNRA 1B, SUNRA 1D AND CANCELLATION OF SAMBO 1B, VHF FREQ.

- RWY 35L/R**
- MISIN ONE BRAVO ARRIVAL (MISIN 1B):** AFTER MISIN FL120, PROCEED ON TRACK 006° (R-186 DAN) TO DAN, PASSING TAHUA AT 2750M, CONTINUE DESCEND 2050M TO DAN DVORDME FOR APPROACH PROCEDURES ILS Y 35L/R OR VOR 35L/R.
 - MISIN ONE DELTA ARRIVAL (MISIN 1D):** AFTER MISIN FL120, PROCEED ON TRACK 006° (R-186 DAN) TO TAHUA REACH 2750M, PROCEED ON TRACK 023° REACH 1600M AT IAF2 (D18.0/R-172 DAN). FOR APPROACH PROCEDURES ILS Y 35R OR VOR 35R (THIS PROCEDURE IS USED FOR APPROACH RWY 35R ONLY).
 - TAMKY ONE BRAVO ARRIVAL (TAMKY 1B):** PASSING TAMKY (2450M) MAINTAIN HEADING 324° (R-144 DAN) TO DAN, DESCEND AND REACH 2050M AT DAN FOR APPROACH PROCEDURES ILS Y 35L/R OR VOR 35L/R.
 - KANGU ONE BRAVO ARRIVAL (KANGU 1B):** PASSING KANGU PROCEED ON TRACK 237° (R-057) TO DAN, DESCEND AND REACH TO 2050M AT DAN FOR APPROACH PROCEDURES ILS Y 35L/R OR VOR 35L/R.
 - SUNRA ONE BRAVO ARRIVAL (SUNRA 1B):** AFTER SUNRA FL120, PROCEED ON TRACK 002° (R-182 DAN) TO DAN, PASSING ANLUT AT 2750M, CONTINUE DESCEND 2050M TO DAN DVORDME FOR APPROACH PROCEDURES ILS Y 35L/R OR VOR 35L/R.
 - SUNRA ONE DELTA ARRIVAL (SUNRA 1D):** AFTER SUNRA FL120, PROCEED ON TRACK 002° (R-182 DAN) TO ANLUT REACH 2750M, PROCEED ON TRACK 013° REACH 1600M AT IAF2 (D18.0/R-172 DAN) FOR APPROACH PROCEDURES ILS Y 35R OR VOR 35R (THIS PROCEDURE IS USED FOR APPROACH RWY 35R ONLY).