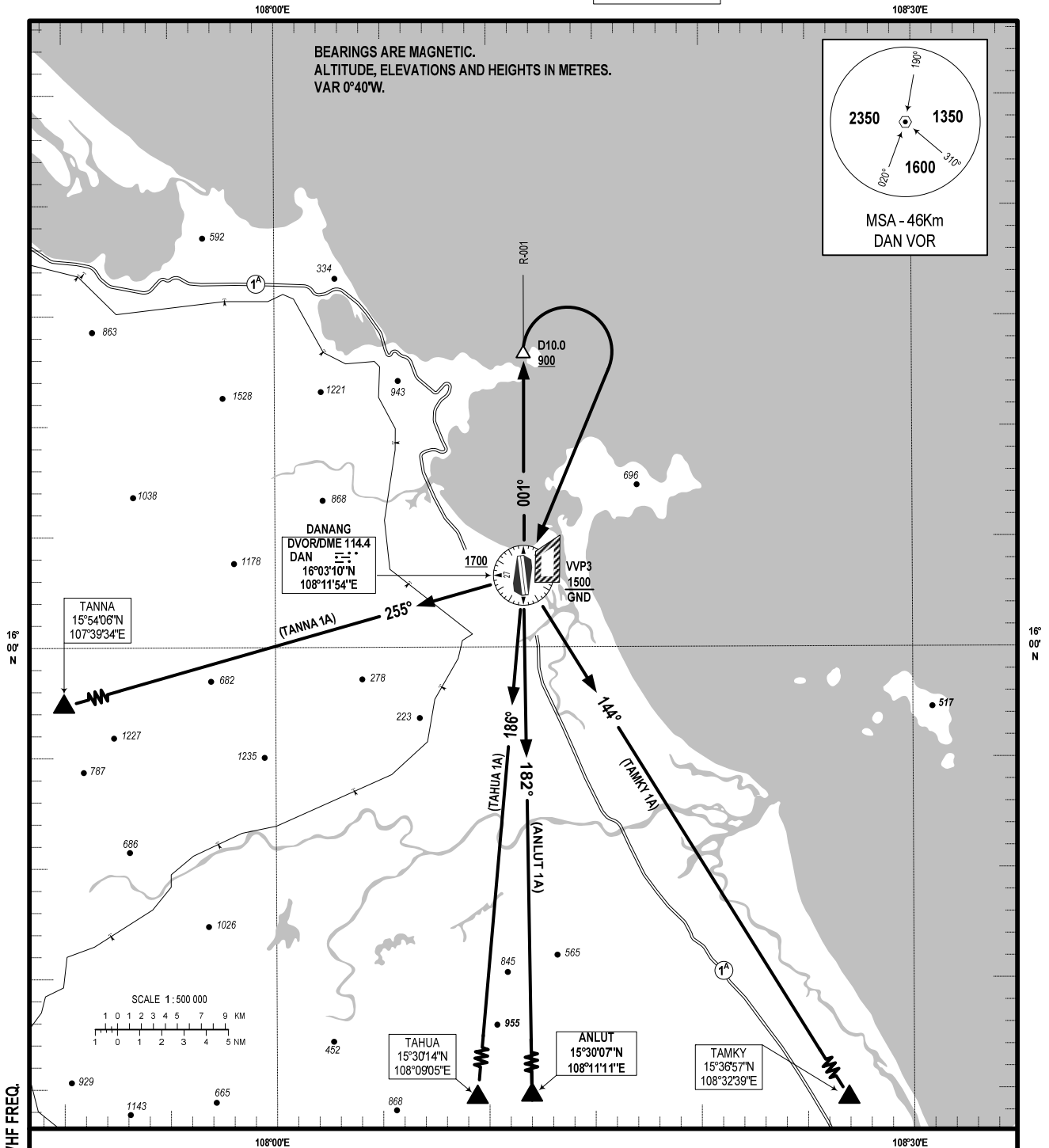


STANDARD DEPARTURE CHART -
INSTRUMENT (SID) - ICAO

AERODROME ELEV: 9M
TRANSITION ALT: 2750M

APP: 120.45 PRI
APP: 125.45 SRY
TWR: 118.35 PRI
TWR: 118.05 SRY

DA NANG/DA NANG INTL (VVDN)
RWY 35L/R
TAMKY 1A, TAHUA 1A,
TANNA 1A, ANLUT 1A.



CHANGES: ADDITION OF ANLUT 1A, VHF FREQ.

RWY 35L/R (MNM PDG 5%)

- 1. TAMKY ONE ALPHA DEPARTURE (TAMKY 1A):** AFT TKOF, JOIN R-001 DAN, CLIMB TO 900M OR ABOVE AT D10.0 DAN, TURN RIGHT TO DAN REACHING 1700M OR ABOVE AT OVERHEAD, CONTINUE CLIMBING TO INTERCEPT R-144 TO TAMKY.
- 2. TAHUA ONE ALPHA DEPARTURE (TAHUA 1A):** AFT TKOF, JOIN R-001 DAN, CLIMB TO 900M OR ABOVE AT D10.0 DAN, TURN RIGHT TO DAN REACHING 1700M OR ABOVE AT OVERHEAD, CONTINUE CLIMBING TO INTERCEPT R-186 TO TAHUA.
- 3. TANNA ONE ALPHA DEPARTURE (TANNA 1A):** AFT TKOF, JOIN R-001 DAN, CLIMB TO 900M OR ABOVE AT D10.0 DAN, TURN RIGHT TO DAN REACHING 1700M OR ABOVE AT OVERHEAD, CONTINUE CLIMBING TO INTERCEPT R-255 TO TANNA.
- 4. ANLUT ONE ALPHA DEPARTURE (ANLUT 1A):** AFT TKOF, JOIN R-001 DAN, CLIMB TO 900M OR ABOVE AT D10.0 DAN, TURN RIGHT TO DAN REACHING 1700M OR ABOVE AT OVERHEAD, CONTINUE CLIMBING TO INTERCEPT R-182 TO ANLUT.